



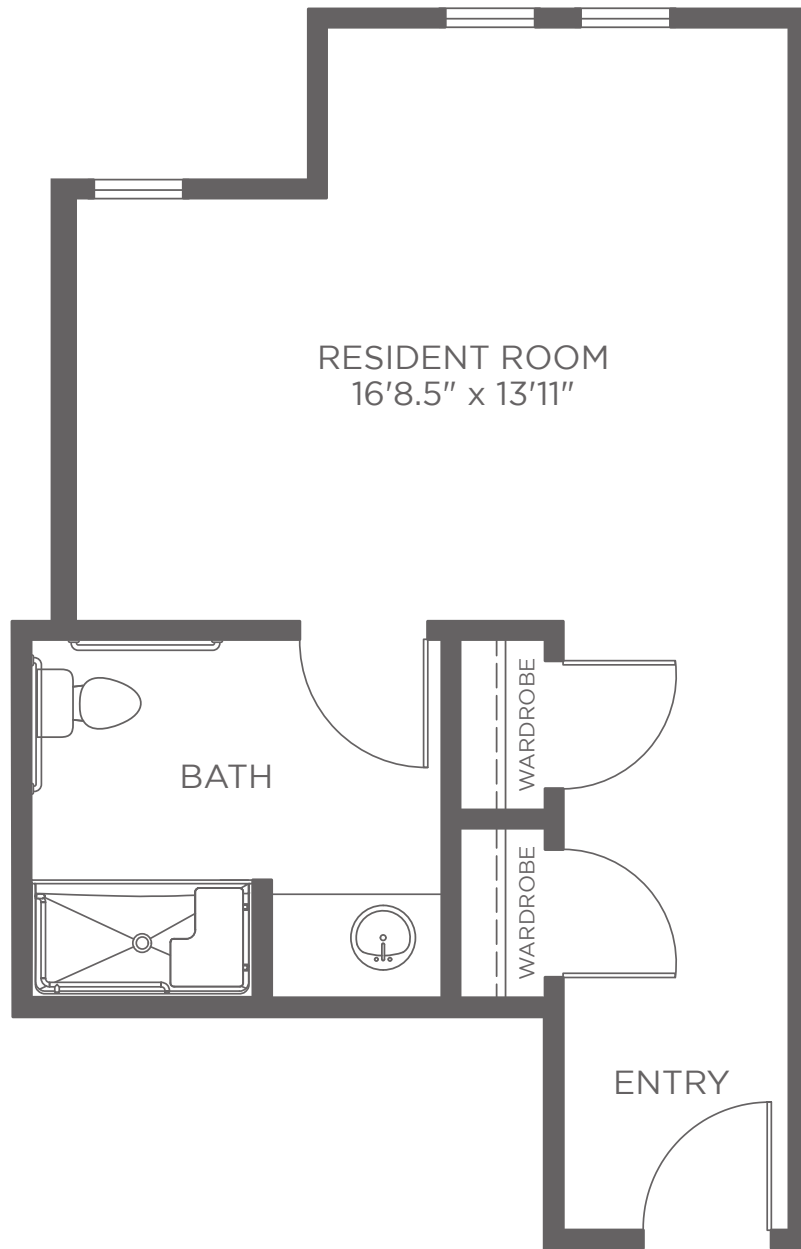
FLOOR PLAN

MEMORY CARE

SANDBRIDGE

DELUXE SUITE | 1 BATH

APPROXIMATELY 394 SF



SUITE # _____ STUDIO TYPE ACTUAL SF _____ CURRENT PRICE \$ _____

EXPIRES _____ KISCO ASSOCIATE INITIALS _____ ONE TIME COMMUNITY FEE \$ _____

Kisco Senior Living reserves the right to change pricing, delete or modify floor plans and specifications without notice or obligation. All square footage is approximate.