



# FLOOR PLAN

## INDEPENDENT LIVING CASITAS

### HERMOSA 1

### 2 Bedroom | 2 Bath

Approximately 1,684 sf

#### Notes

---



---



---



---



---



---



---



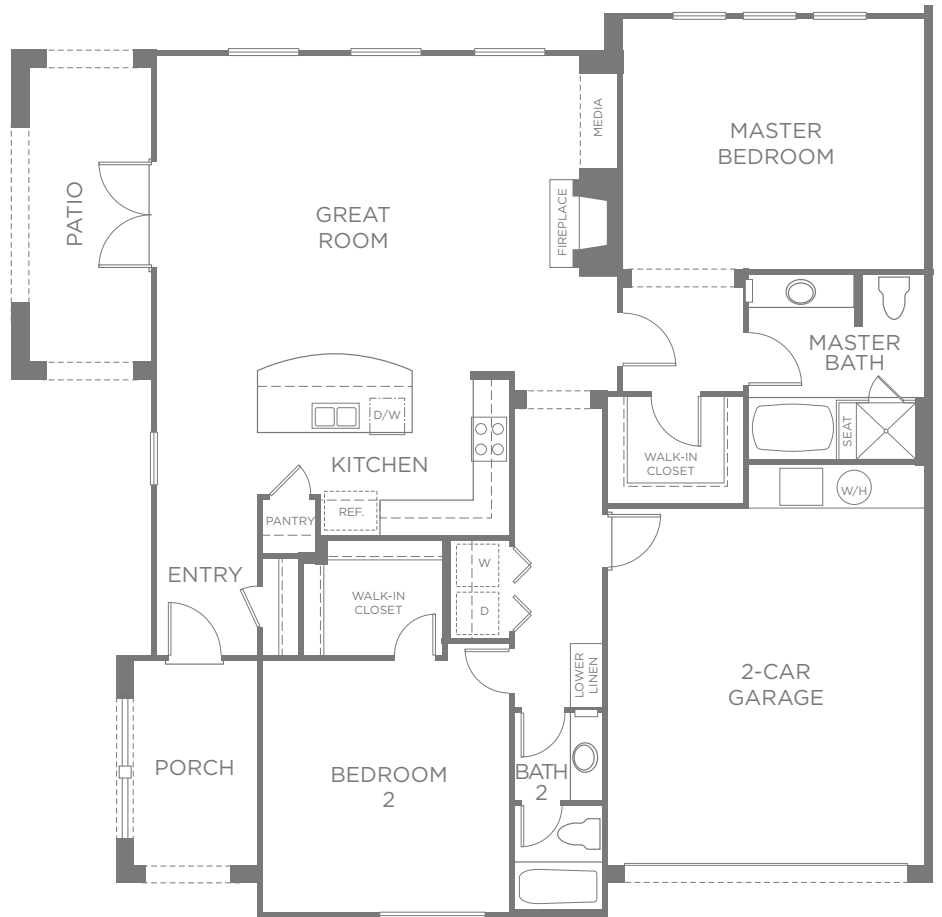
---



---



---





# FLOOR PLAN

## INDEPENDENT LIVING CASITAS

### HERMOSA 2

### 2 Bedroom | 2 Bath

Approximately 1,684 sf

#### Notes

---



---



---



---



---



---



---



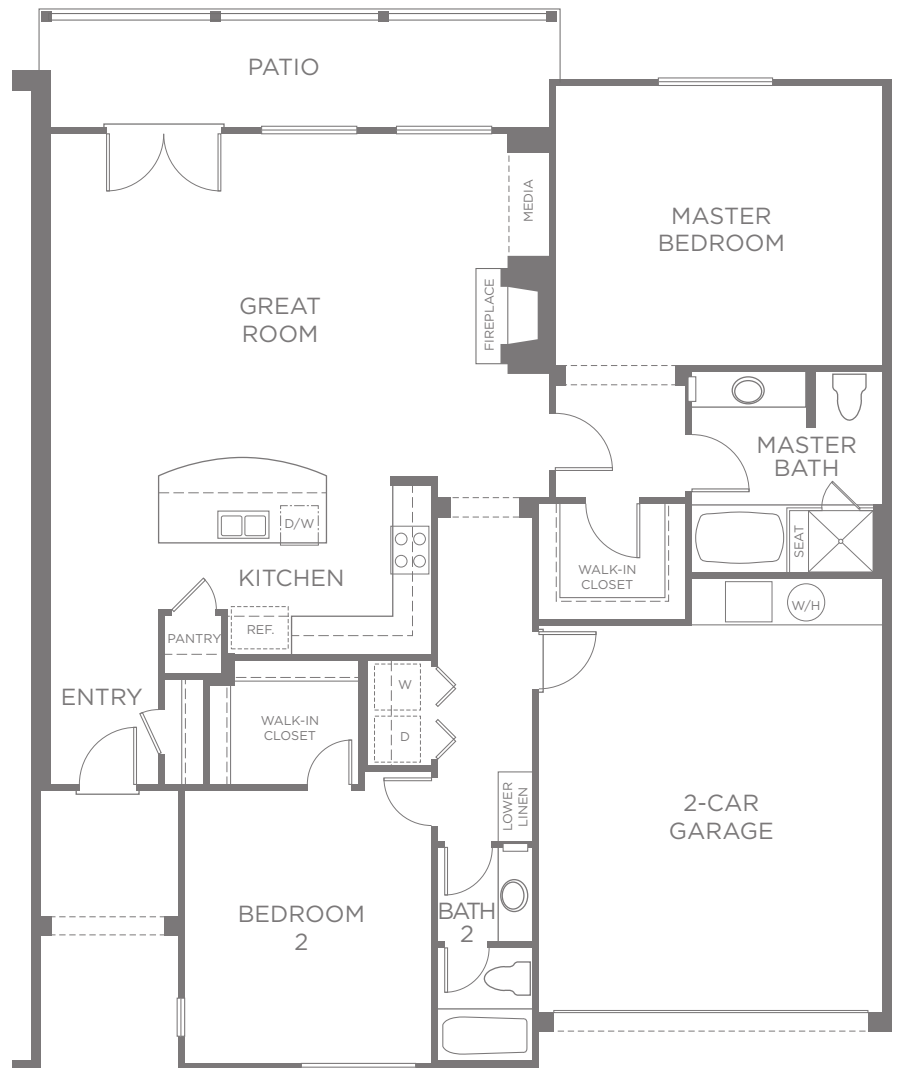
---



---



---





# FLOOR PLAN

## INDEPENDENT LIVING CASITAS

### BOLERO

**2 Bedroom | 2 Bath | Den**

Approximately 1,750 sf

#### Notes

---



---



---



---



---



---



---



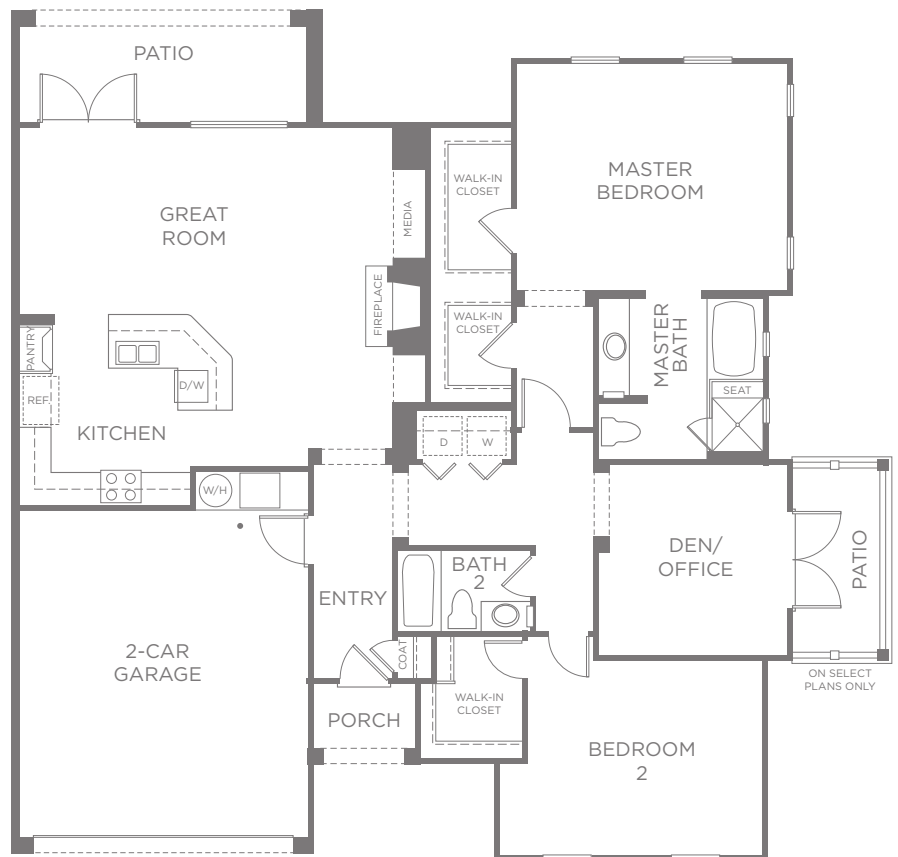
---



---



---





# FEATURES

## INDEPENDENT LIVING CASITAS

### CLASSIC SPANISH ARCHITECTURAL STYLING

- Exterior stucco finishes in artistic color palettes
- Durable, fire resistant concrete roof tiles in decorator colors
- Direct access 2-car garage with sectional steel roll-up garage door and automatic openers
- Professionally landscaped front and side yards with automatic sprinklers
- Screens on all operable windows
- 8ft raised panel fiberglass front door

### LIFESTYLE INTERIORS

- Rounded drywall corners for enhanced architectural styling
- Comfortable Great Rooms with gas fireplace and decorative surround
- Media niche with built-in cabinet and granite countertop
- Crafted wood paint grade baseboards and door casings
- Handcrafted white thermafoil cabinets with recessed panel doors
- Quality carpet in designer colors throughout
- Decorative 12" x 12" ceramic tile flooring in entry, kitchen and bathrooms
- Six-panel interior doors with Schlage® lever handles
- Designer oil-rubbed bronze light fixtures with Decora® switches
- Moen® plumbing fixtures
- High tech structured wiring system
- Category 5E telephone wiring at kitchen, master bedroom and living room
- Whirlpool® side-by-side washer and dryer

### YOUR KITCHEN

- Convenient kitchen island for food prep with breakfast bar
- Whirlpool® white appliance package including four burner Energy Star gas oven and range, dishwasher, microwave and refrigerator
- Granite countertops
- Dual compartment stainless steel sink with Moen® single-lever spray faucet
- Insinkerator® heavy-duty disposal with push button at sink

### YOUR MASTER SUITE

- Elegant master bedroom with private master bath
- Generous walk-in closet with wood shelf and pole
- Granite countertops
- Decorative Moen® faucets
- Oval soaking tub and separate shower with glass enclosure
- Full width vanity mirrors with decorator lighting

### ENVIRONMENTAL ADVANTAGES FOR YOUR PROTECTION

- Dual glazed vinyl windows with energy-efficient low "E" glass
- Forced air heating and air conditioning with programmable set back thermostat
- Water-saving plumbing fixtures
- Fully insulated walls and attic
- High efficiency gas water heater with re-circulating pump and anti-scald mixing valve
- Energy efficient fluorescent lighting
- Security system for your safety and peace of mind

### Notes

---



---



---

*Kisco Senior Living reserves the right to change pricing, delete or modify floor plans and specifications without notice or obligation. All square footage is approximate.* 



# FLOOR PLAN

INDEPENDENT LIVING APARTMENT HOMES

LILY

## Studio Deluxe | 1 Bath

Approximately 581 sf

### Notes

---



---



---



---



---



---



---



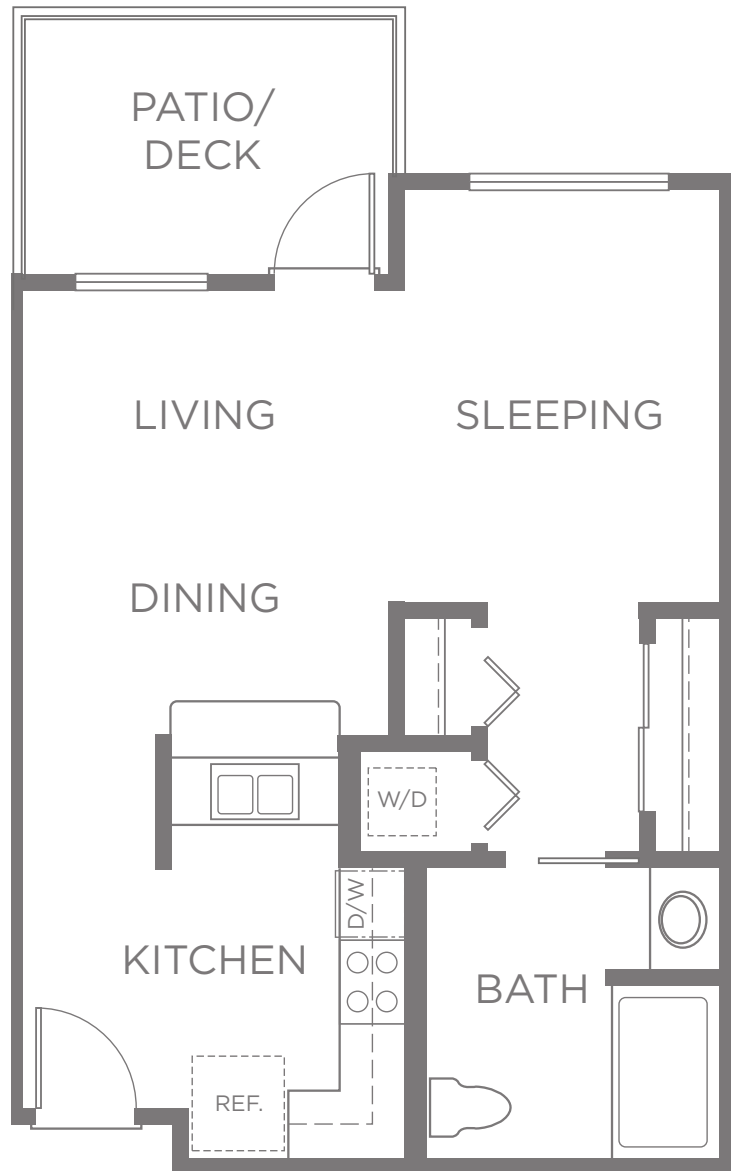
---



---



---





# FLOOR PLAN

INDEPENDENT LIVING APARTMENT HOMES

ROSE 1

## 1 Bedroom | 1 Bath

Approximately 675 sf

### Notes

---



---



---



---



---



---



---



---



---



---



---



---



---



---



---



---



---



---



---



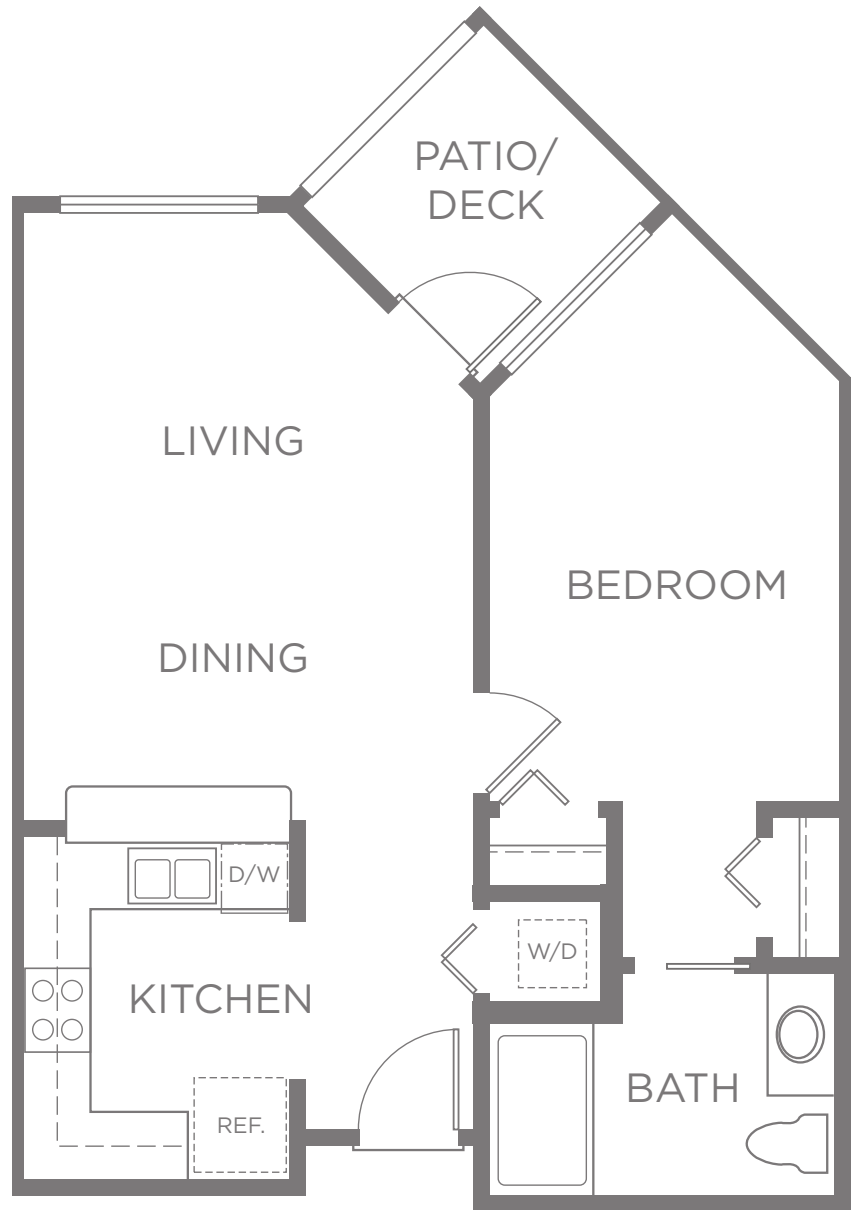
---



---



---





# FLOOR PLAN

INDEPENDENT LIVING APARTMENT HOMES

ROSE 2

## 1 Bedroom | 1 Bath

Approximately 685 sf

### Notes

---



---



---



---



---



---



---



---



---



---



---



---



---



---



---



---



---



---



---



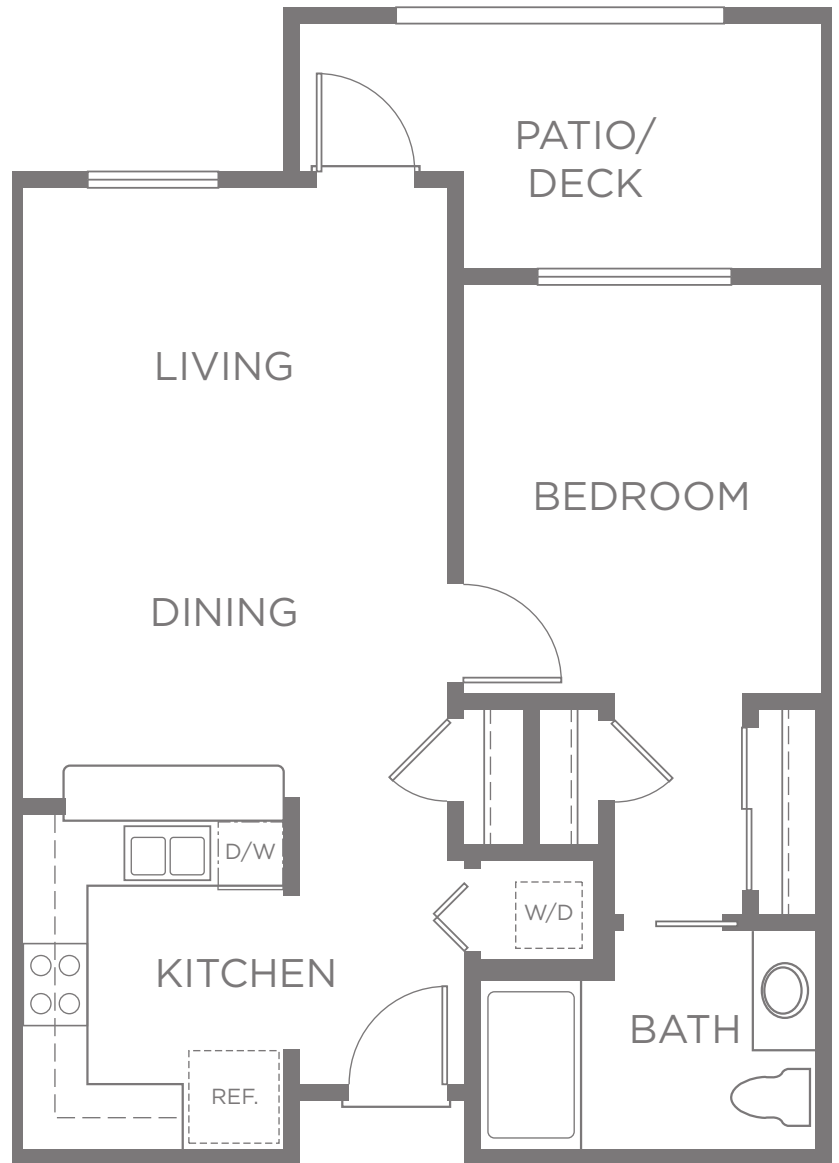
---



---



---





# FLOOR PLAN

INDEPENDENT LIVING APARTMENT HOMES

ROSE 3

## 1 Bedroom | 1 Bath

Approximately 721 sf

### Notes

---



---



---



---



---



---



---



---



---



---



---



---



---



---



---



---



---



---



---



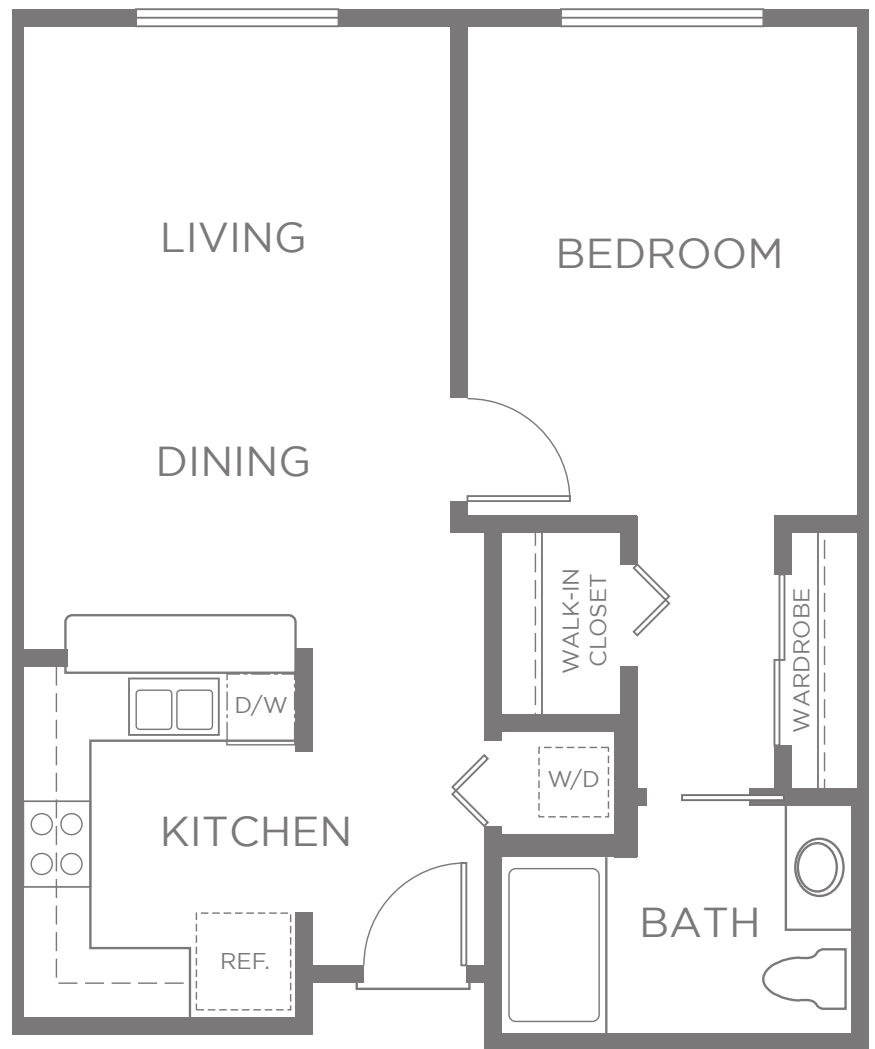
---



---



---







# FLOOR PLAN

INDEPENDENT LIVING APARTMENT HOMES

## NANDINA 1

**1 Bedroom | 1½ Bath**

Approximately 822 sf

### Notes

---



---



---



---



---



---



---



---



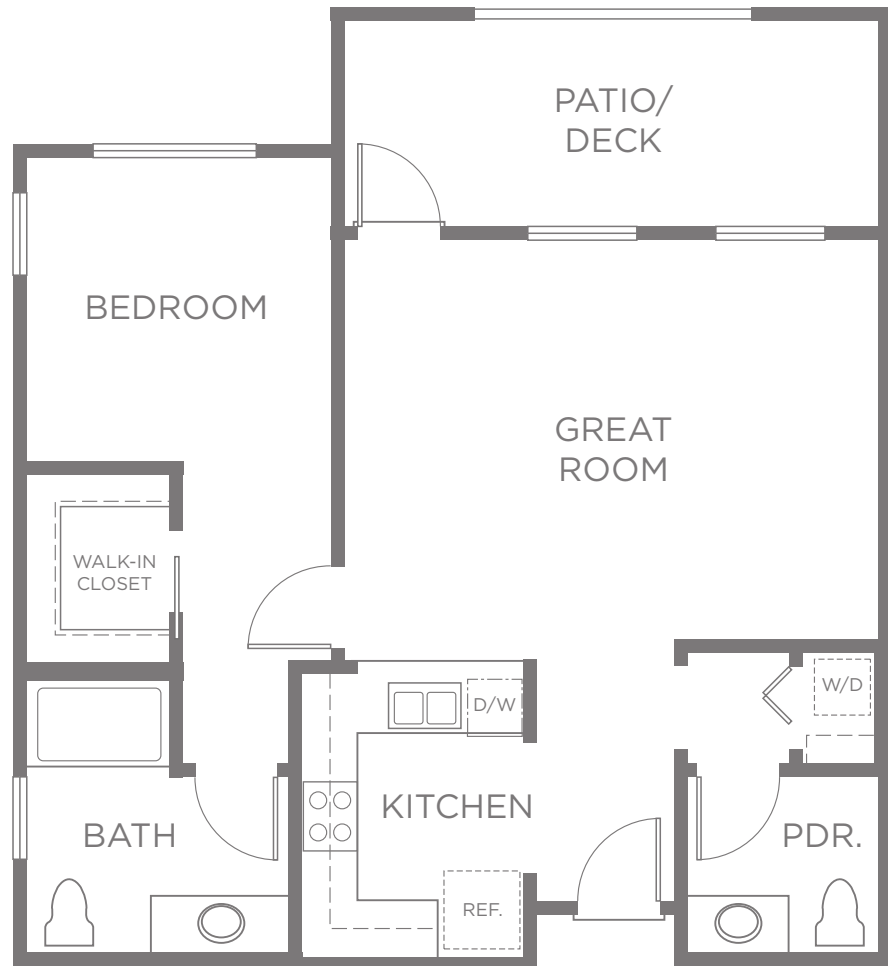
---



---



---





# FLOOR PLAN

INDEPENDENT LIVING APARTMENT HOMES

## NANDINA 2

**1 Bedroom | 1½ Bath**

Approximately 876 - 895 sf

### Notes

---



---



---



---



---



---



---



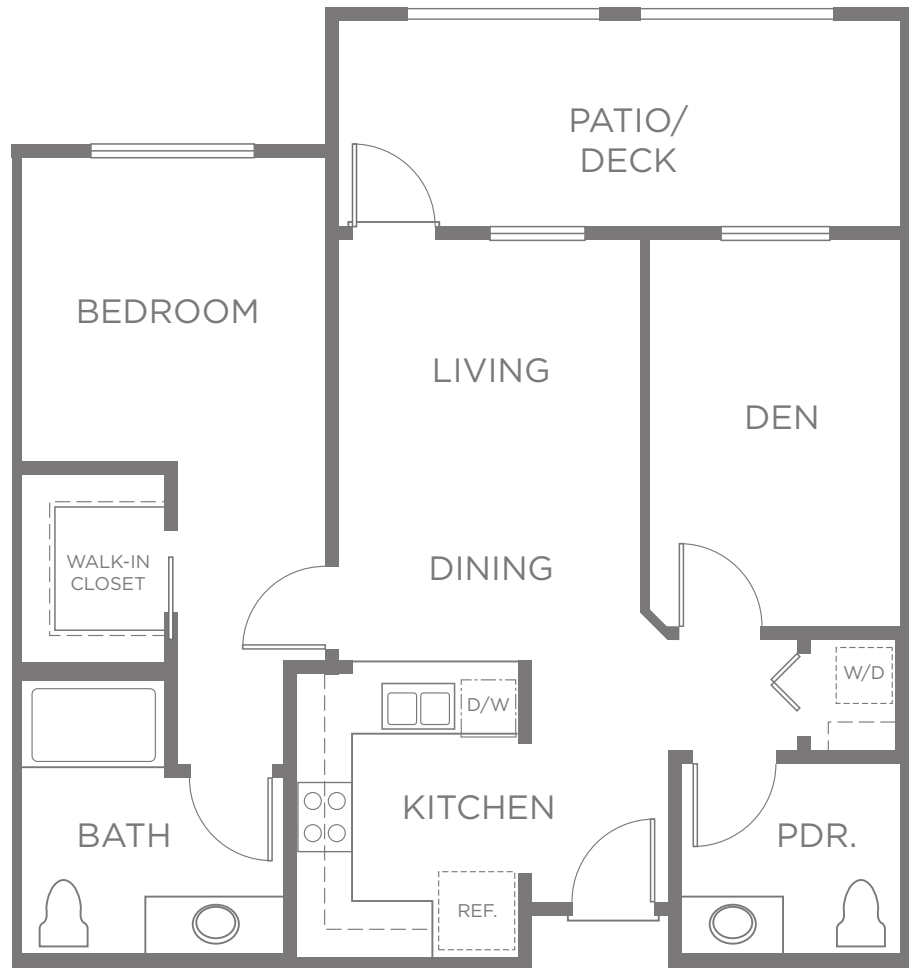
---



---



---





# FLOOR PLAN

INDEPENDENT LIVING APARTMENT HOMES

## JUNIPER

### 2 Bedroom | 2 Bath

Approximately 976 sf

#### Notes

---



---



---



---



---



---



---



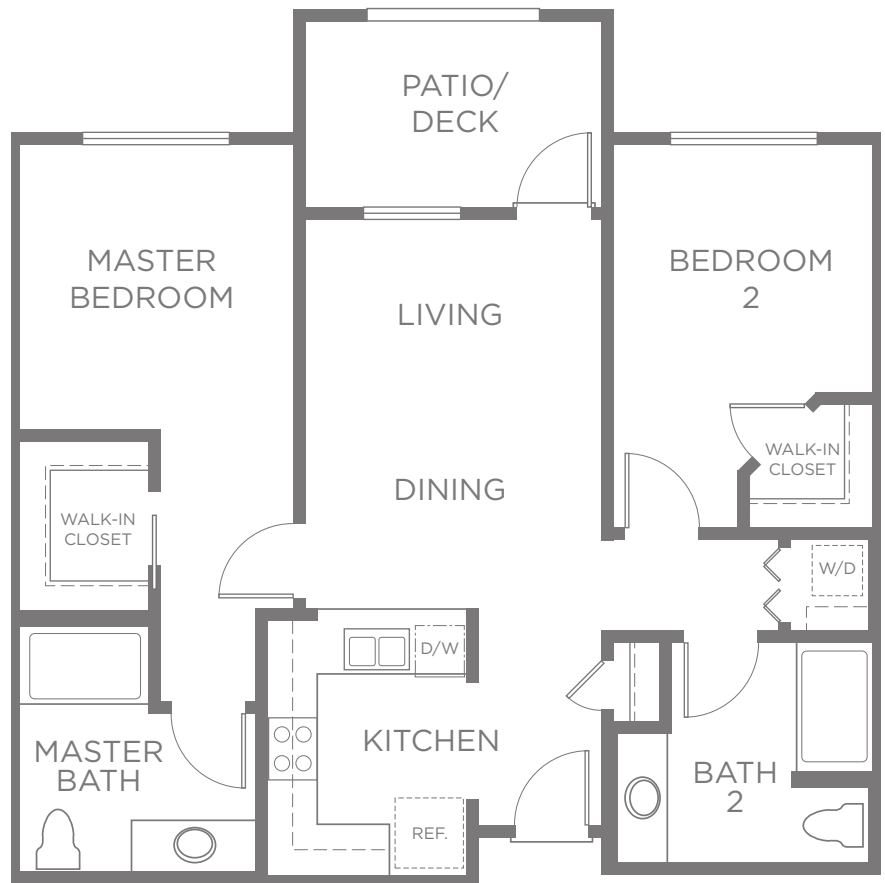
---



---



---





# FEATURES

## INDEPENDENT LIVING APARTMENT HOMES

### LIFESTYLE INTERIORS

- Rounded drywall corners for enhanced architectural styling
- Crafted wood paint grade baseboards and door casings
- Handcrafted white thermofoil cabinets with recessed panel doors
- Quality carpet in primary living areas
- Vinyl flooring in entry, kitchen, bathrooms and laundry area
- Six-panel interior doors with Schlage® oil-rubbed bronze lever handles
- Designer selected light fixtures with Decora® switches
- Moen® decorator plumbing fixtures
- High tech structured wiring system
- Category 5E telephone wiring in bedrooms, living room, and kitchen
- Whirlpool® stacked washer and dryer

### YOUR KITCHEN

- Whirlpool® white appliance package including; range/oven, microwave and refrigerator
- Granite countertops
- Dual compartment stainless-steel sink with Moen® single-lever spray faucet
- Insinkerator® heavy-duty disposal

### Notes

---

---

---

---

---

---

---

---

---

---

### YOUR MASTER SUITE

- Elegant master bedroom with private bath
- Generous wardrobe or walk-in closet with wood shelf and pole (varies per plan)
- Granite countertops
- Decorative Moen® faucets
- Shower with adjustable handheld showerhead
- Full width vanity mirrors with decorator lighting

### ENVIRONMENTAL ADVANTAGES FOR YOUR PROTECTION

- Dual glazed vinyl windows with energy-efficient low “E” glass
- Forced air heating and air conditioning with programmable set back thermostat
- Water-saving plumbing fixtures
- Fully insulated walls and attic
- High efficiency gas water heater with re-circulating pump and anti-scald mixing valve
- Energy efficient fluorescent lighting
- Security system for your safety and peace of mind

*Kisco Senior Living reserves the right to change pricing, delete or modify floor plans and specifications without notice or obligation. All square footage is approximate.* 



# FLOOR PLAN

## ASSISTED LIVING APARTMENT HOMES

ASPEN 1

### Studio | 1 Bath | Deck

Approximately 438 sf

#### Notes

---



---



---



---



---



---



---



---



---



---





# FLOOR PLAN

ASSISTED LIVING APARTMENT HOMES

ASPEN 2

## Studio | 1 Bath

Approximately 570 sf

### Notes

---



---



---



---



---



---



---



---



---



---



---



---



---



---



---



---



---



---



---



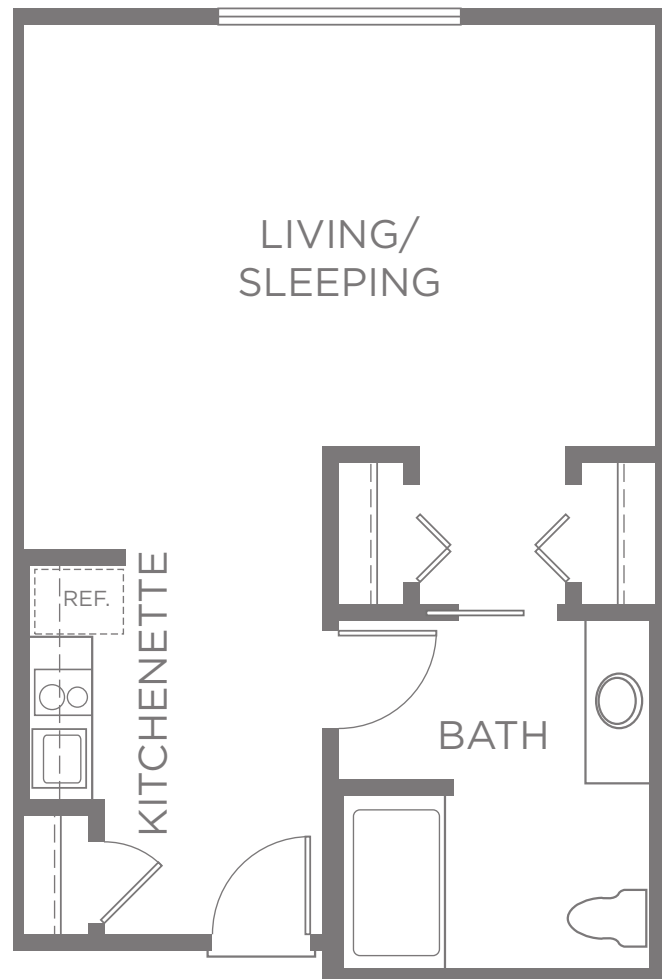
---



---



---





# FLOOR PLAN

## ASSISTED LIVING APARTMENT HOMES

PALM 1

### 1 Bedroom | 1 Bath

Approximately 587 sf

#### Notes

---



---



---



---



---



---



---



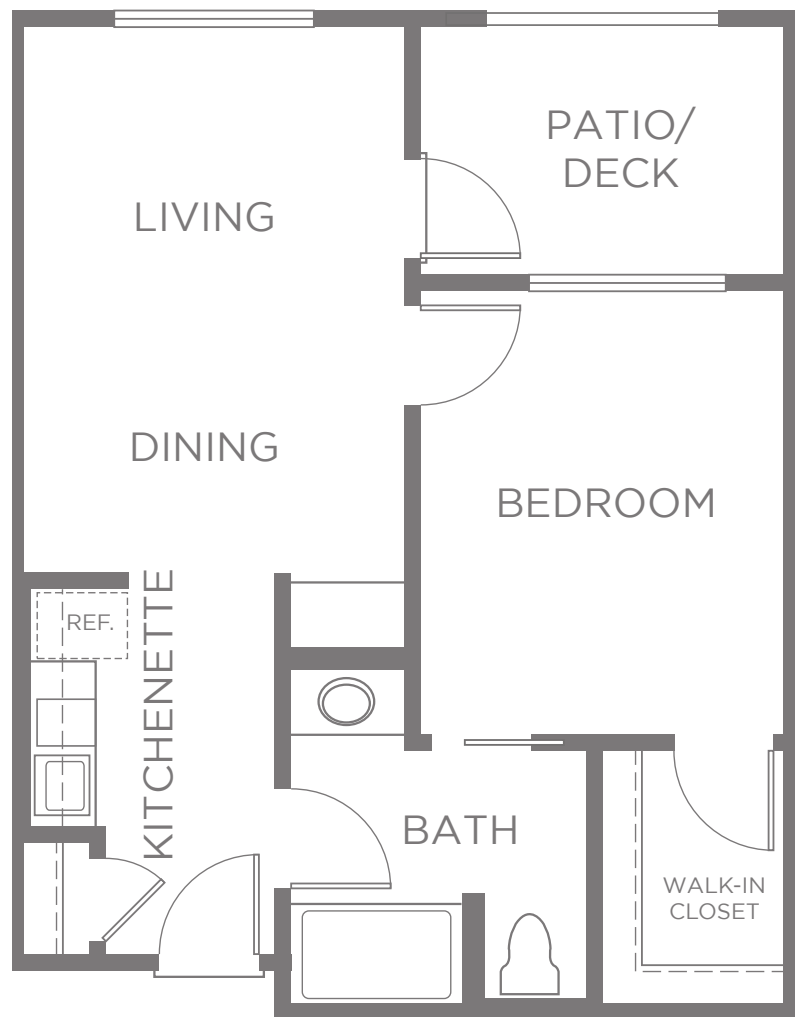
---



---



---





# FLOOR PLAN

## ASSISTED LIVING APARTMENT HOMES

PALM 2

### 1 Bedroom | 1 Bath

Approximately 681 sf

#### Notes

---



---



---



---



---



---



---



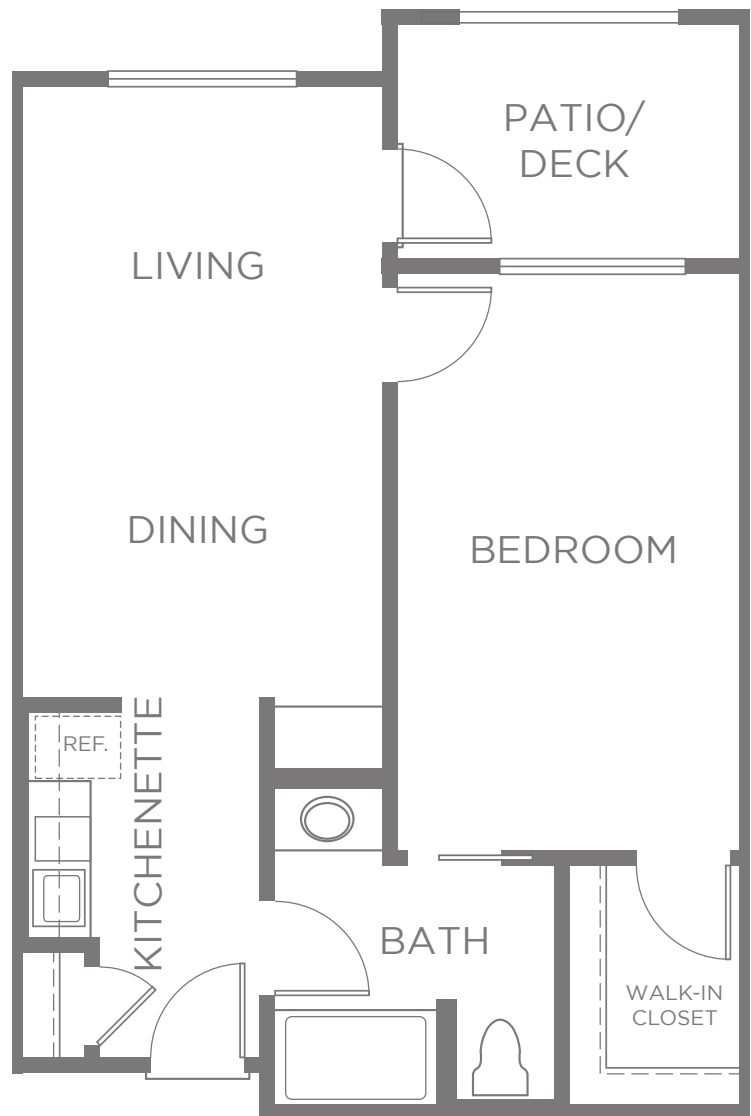
---



---



---







# FLOOR PLAN

ASSISTED LIVING APARTMENT HOMES

OAK

## 2 Bedroom | 1 Bath

Approximately 778 sf

### Notes

---



---



---



---



---



---



---



---



---



---



---



---



---



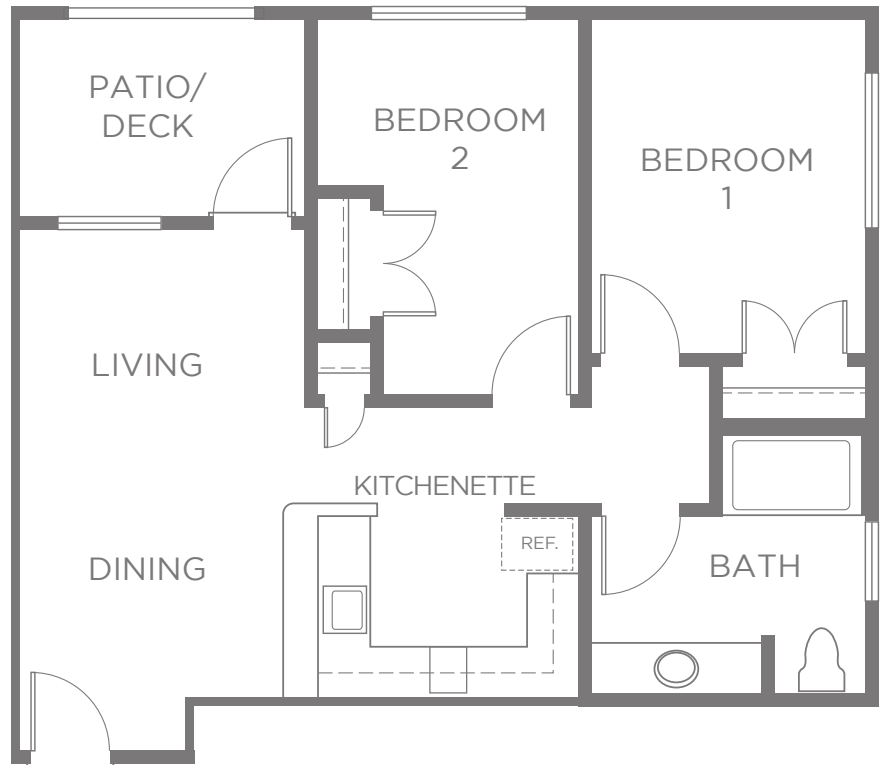
---



---



---





# FLOOR PLAN

ASSISTED LIVING APARTMENT HOMES

## SEQUOIA

### 1 Bedroom | 1 Bath

Approximately 815 sf

#### Notes

---



---



---



---



---



---



---



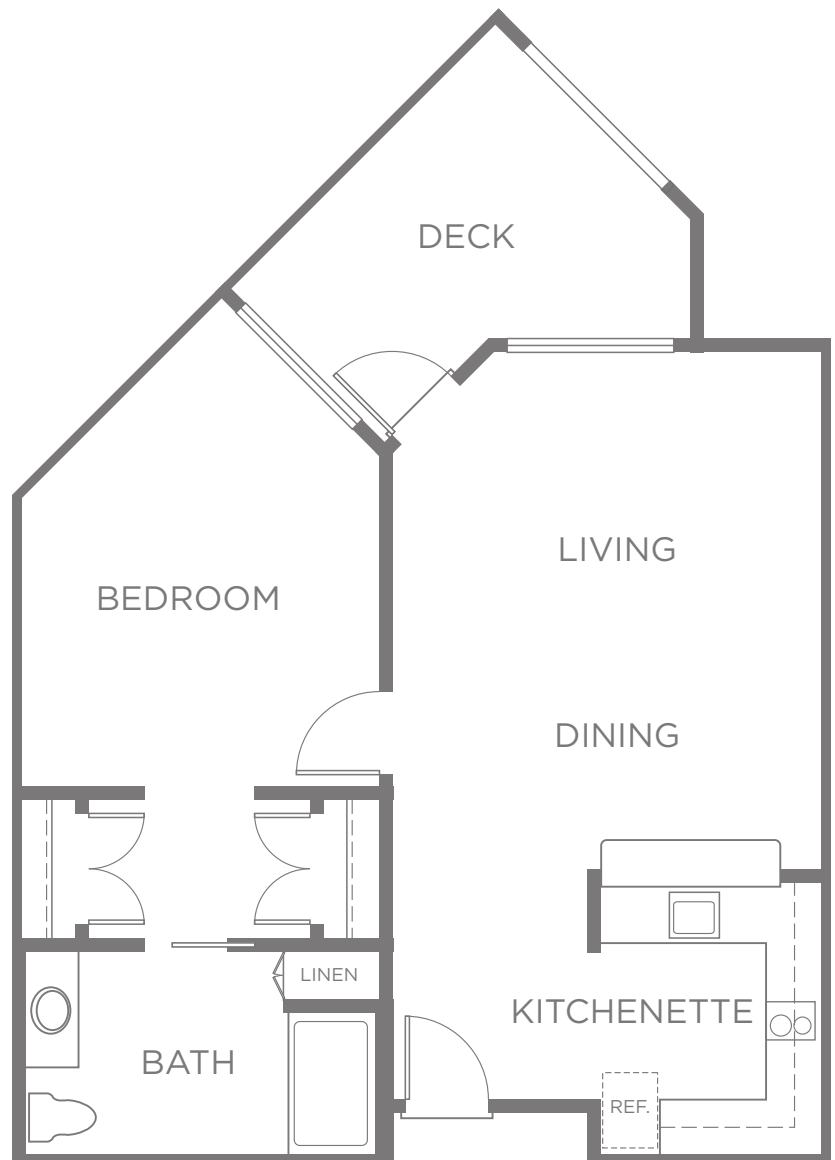
---



---



---





# FLOOR PLAN

## ASSISTED LIVING APARTMENT HOMES

### COTTONWOOD

### 2 Bedroom | 1½ Bath

Approximately 988 sf

#### Notes

---



---



---



---



---



---



---



---



---



---



---



---



---



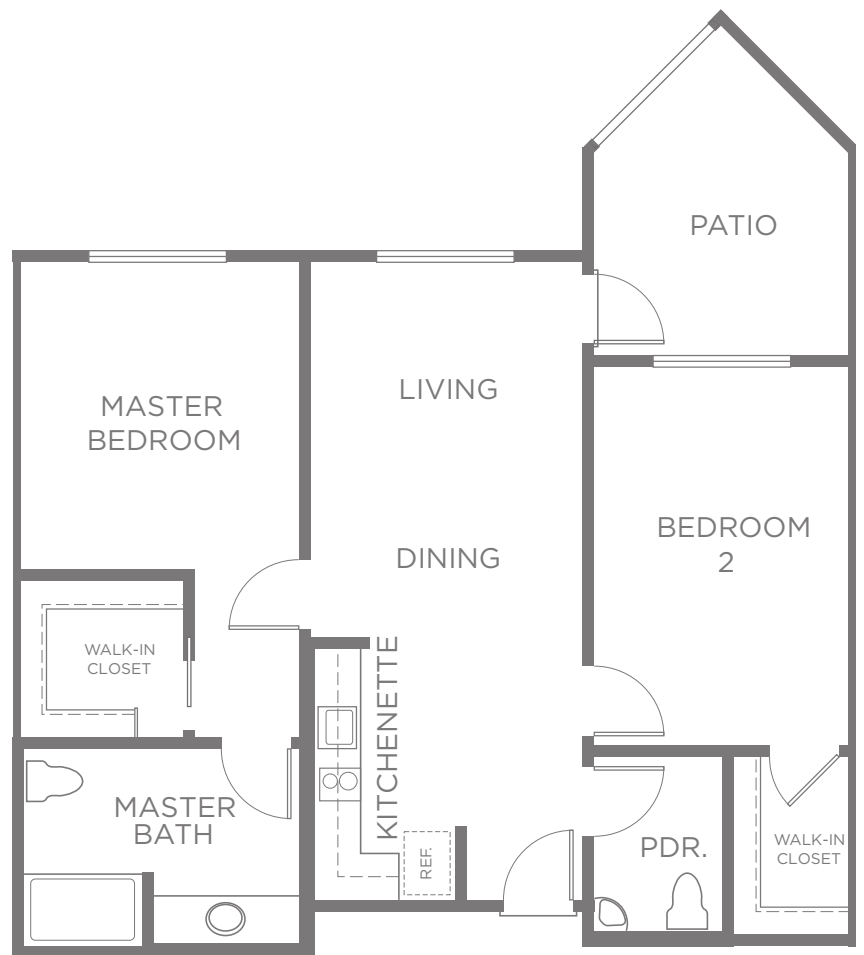
---



---



---





# FEATURES

## ASSISTED LIVING APARTMENT HOMES

### LIFESTYLE INTERIORS

- Rounded drywall corners for enhanced architectural styling
- Crafted wood paint grade baseboards and door casings
- Handcrafted white thermofoil cabinets with recessed panel doors
- Quality carpet in primary living areas
- Vinyl flooring in entry, kitchen and bathrooms
- Six-panel interior doors with Schlage® lever handles
- Designer selected light fixtures with Decora® switches
- Moen® decorator plumbing fixtures
- High tech structured wiring system
- Category 5E telephone wiring in bedrooms and living room

### YOUR KITCHENETTE

- Whirlpool® white appliance package including microwave, two-burner cook top and refrigerator
- Granite countertops
- Dual compartment stainless steel sink with Moen® single-lever spray faucet
- Insinkerator heavy-duty disposal

### YOUR MASTER SUITE

- Elegant master bedroom with private bath
- Generous wardrobe closet with wood shelf and pole
- Granite countertops
- Decorative Moen® faucets
- Roll in tub/shower with adjustable handheld showerhead
- Full-width vanity mirrors with decorator lighting

### ENVIRONMENTAL ADVANTAGES FOR YOUR PROTECTION

- Dual glazed vinyl windows with energy-efficient low “E” glass
- Forced air heating and air conditioning with programmable set back thermostat
- Water-saving plumbing fixtures
- Fully insulated walls and attic
- Energy-efficient fluorescent lighting

### Notes

---

---

---

---

---

---

---

---

---

---

*Kisco Senior Living reserves the right to change pricing, delete or modify floor plans and specifications without notice or obligation. All square footage is approximate.* 