

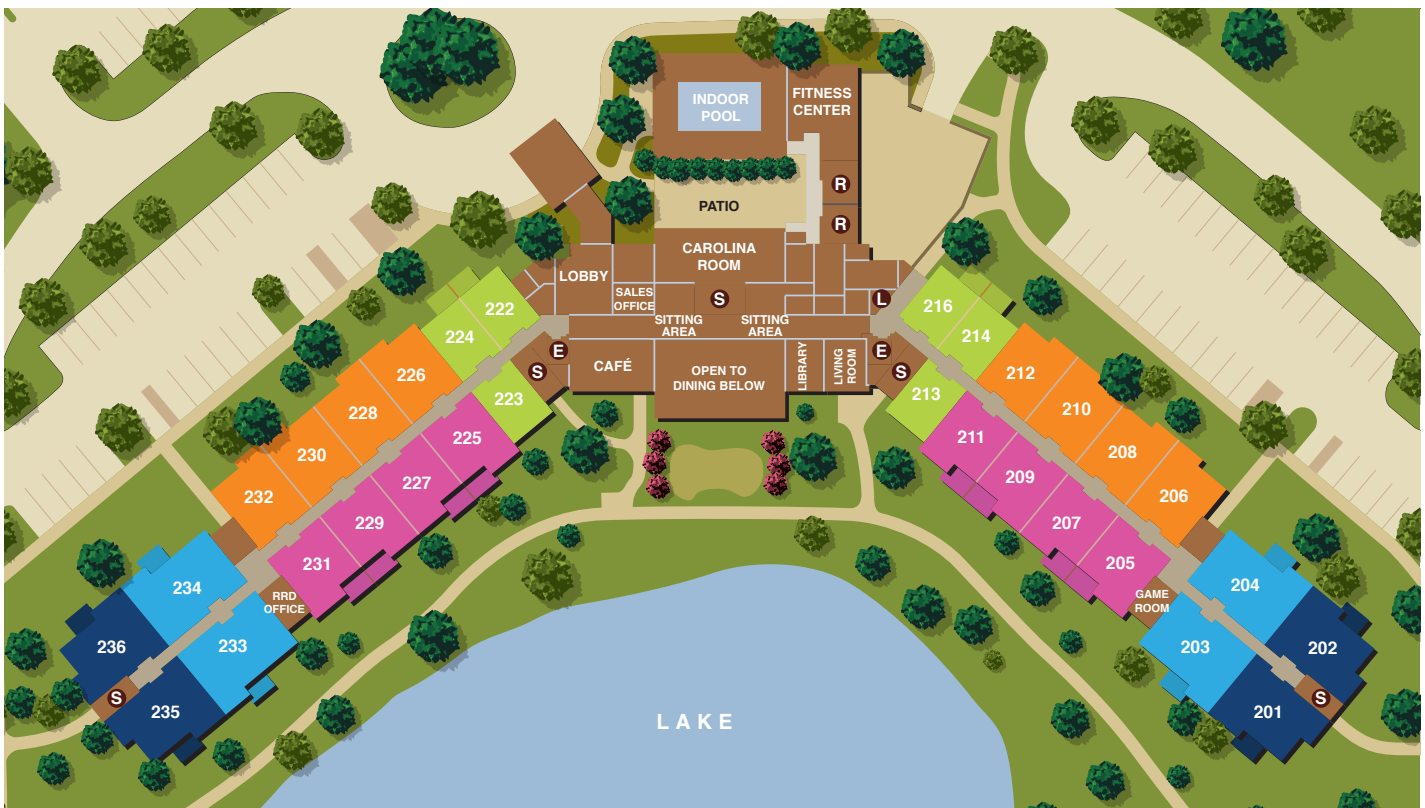


SITE PLAN

INDEPENDENT LIVING APARTMENT HOMES

MAIN LEVEL

- Franklin - studio, one bath
- Alexander - one bedroom, one bath
- Richmond - one bedroom, one bath
- Montgomery - two bedroom, one bath
- Brunswick - two bedroom, two bath



- S Stairs
- E Elevator
- L Laundry
- R Restrooms

5/16

Map not to scale

Kisco Senior Living reserves the right to change pricing, delete or modify floor plans and specifications without notice or obligation. All square footage is approximate.

300 Kildaire Woods Drive
Cary, North Carolina 27511
919.465.0356

LifeatWoodlandTerrace.com
[Facebook.com/WoodlandTerrace](https://www.facebook.com/WoodlandTerrace)

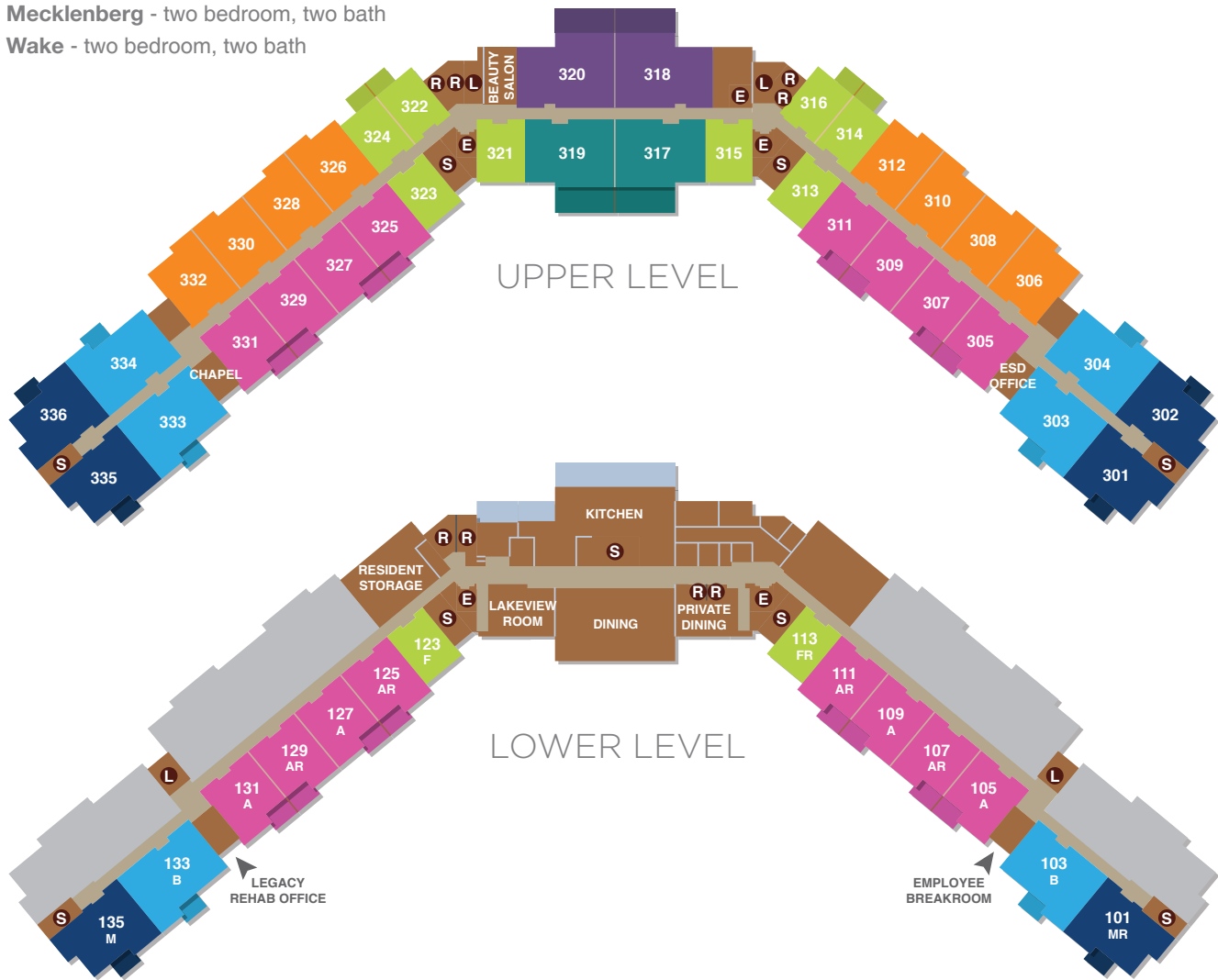
**Woodland
Terrace**
A KISCO COMMUNITY



SITE PLAN

INDEPENDENT LIVING APARTMENT HOMES

- Franklin** - studio, one bath
- Alexander** - one bedroom, one bath
- Richmond** - one bedroom, one bath
- Montgomery** - two bedroom, one bath
- Brunswick** - two bedroom, two bath
- Mecklenberg** - two bedroom, two bath
- Wake** - two bedroom, two bath



Map not to scale

- S Stairs
- E Elevator
- L Laundry
- R Restrooms

5/16

Kisco Senior Living reserves the right to change pricing, delete or modify floor plans and specifications without notice or obligation. All square footage is approximate.

300 Kildaire Woods Drive
Cary, North Carolina 27511
919.465.0356

LifeatWoodlandTerrace.com
Facebook.com/WoodlandTerrace

**Woodland
Terrace** 
A KISCO COMMUNITY



SITE PLAN

INDEPENDENT LIVING COTTAGES

- **Lakeview** - two bedroom, two bath
- **Ashby** - two bedroom, two bath
- **Preston** - two bedroom, two bath



5/16

Map not to scale

Kisco Senior Living reserves the right to change pricing, delete or modify floor plans and specifications without notice or obligation. All square footage is approximate.



300 Kildaire Woods Drive
Cary, North Carolina 27511
919.465.0356

LifeatWoodlandTerrace.com
Facebook.com/WoodlandTerrace

**Woodland
Terrace**



A KISCO COMMUNITY



AMENITIES

INDEPENDENT LIVING APARTMENT HOMES + COTTAGES



- 22-acres of lushly landscaped grounds
- Sparkling lake with walking trails and fountain
- Library
- Two-story dining room
- State-of-the-art fitness center
- Indoor heated pool
- Activity and card rooms
- Elevators
- Ample parking
- Storage available (for a nominal charge)
- Courtyards and patios located throughout the community
- 24-hour emergency response
- Backup generator
- Beauty shop onsite
- Controlled access to main building
- Sprinkler system



Kisco Senior Living reserves the right to change pricing, delete or modify floor plans and specifications without notice or obligation. All square footage is approximate. 

300 Kildaire Woods Drive
Cary, North Carolina 27511
919.465.0356

LifeatWoodlandTerrace.com
Facebook.com/WoodlandTerrace

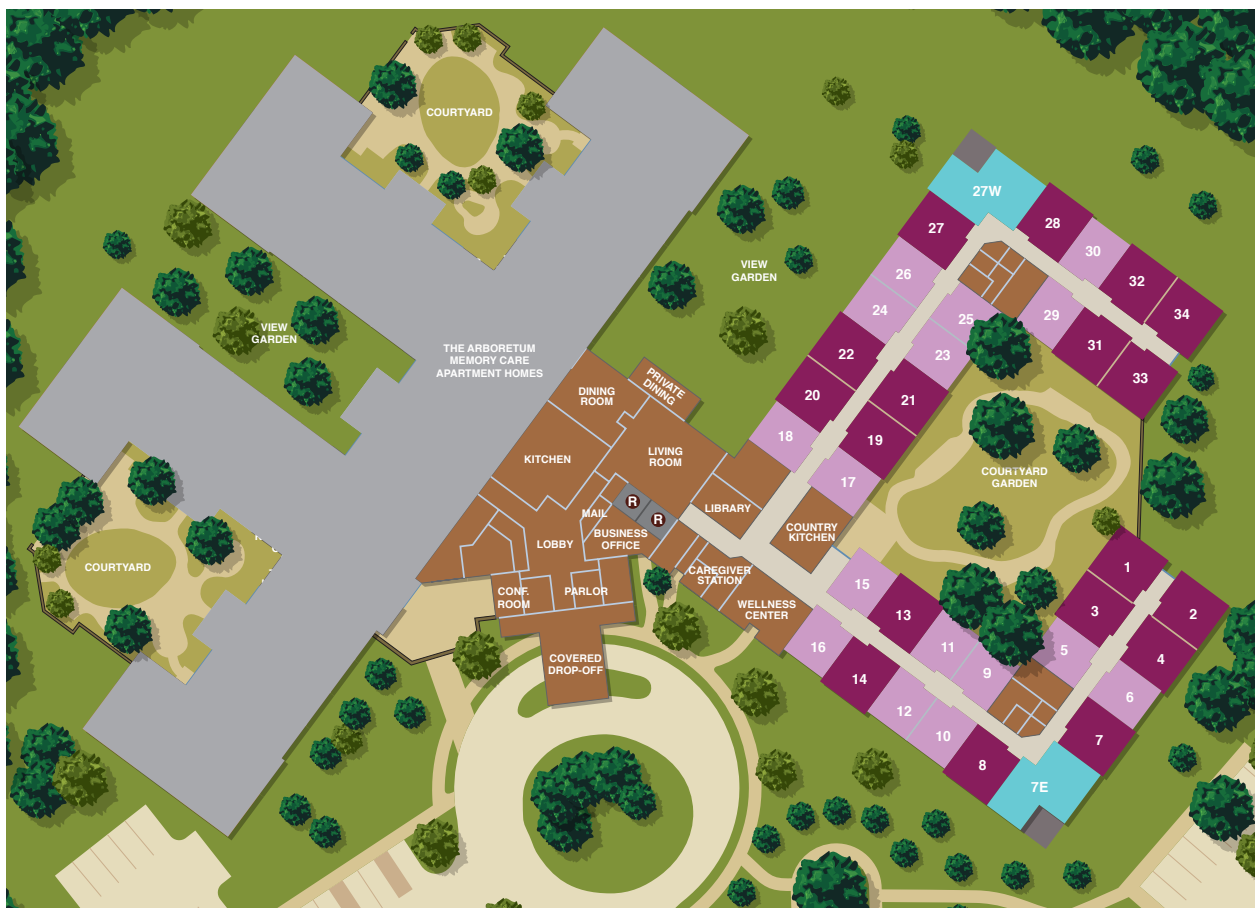
Woodland
Terrace 
A KISCO COMMUNITY



SITE PLAN

ASSISTED LIVING APARTMENT HOMES

- Alcove** - studio, one bath
- One Bedroom** - one bedroom, one bath
- One Bedroom Deluxe** - one bedroom, one bath



5/16

Map not to scale

R Restrooms

Kisco Senior Living reserves the right to change pricing, delete or modify floor plans and specifications without notice or obligation. All square footage is approximate.

300 Kildaire Woods Drive
Cary, North Carolina 27511
919.465.0356

LifeatWoodlandTerrace.com
[Facebook.com/WoodlandTerrace](https://www.facebook.com/WoodlandTerrace)

VerraSpring
at Woodland Terrace



A KISCO ASSISTED LIVING COMMUNITY



AMENITIES

ASSISTED LIVING APARTMENT HOMES



- Lushly landscaped grounds
- Sparkling lake
- Outdoor courtyard with gazebo
- Library
- Beauty shop
- Access to fitness center and swimming pool
- Sprinkler system
- Onsite physical therapy, occupational therapy and speech therapy
- All private apartments
- 24-hour emergency response
- Individual climate control

Kisco Senior Living reserves the right to change pricing, delete or modify floor plans and specifications without notice or obligation. All square footage is approximate.

300 Kildaire Woods Drive
Cary, North Carolina 27511
919.465.0356

LifeatWoodlandTerrace.com
[Facebook.com/WoodlandTerrace](https://www.facebook.com/WoodlandTerrace)

VerraSpring
at Woodland Terrace



A KISCO ASSISTED LIVING COMMUNITY



SITE PLAN

MEMORY CARE APARTMENT HOMES

- **Companion Studio** - studio, one bath
- **Semi-Private Studio** - studio, one bath
- **Private Studio** - studio, one bath



6/18

Map not to scale

R Restrooms

Kisco Senior Living reserves the right to change pricing, delete or modify floor plans and specifications without notice or obligation. All square footage is approximate.



300 Kildaire Woods Drive
Cary, North Carolina 27511
919.465.0356

LifeatWoodlandTerrace.com
Facebook.com/WoodlandTerrace

The Arboretum
at Woodland Terrace



A KISCO MEMORY CARE COMMUNITY



AMENITIES

MEMORY CARE APARTMENT HOMES



- Lushly landscaped grounds
- Secure courtyards with walking trail
- Screened porches with rocking chairs
- Family style dining
- Beauty shop
- Access to fitness center and swimming pool
- Onsite physical therapy, occupational therapy and speech therapy
- Spacious private and companion suites
- Individual climate control



Kisco Senior Living reserves the right to change pricing, delete or modify floor plans and specifications without notice or obligation. All square footage is approximate. 

300 Kildaire Woods Drive
Cary, North Carolina 27511
919.465.0356

LifeatWoodlandTerrace.com
[Facebook.com/WoodlandTerrace](https://www.facebook.com/WoodlandTerrace)

The Arboretum
at Woodland Terrace 
A KISCO MEMORY CARE COMMUNITY