



# FLOOR PLAN

## ASSISTED LIVING APARTMENTS

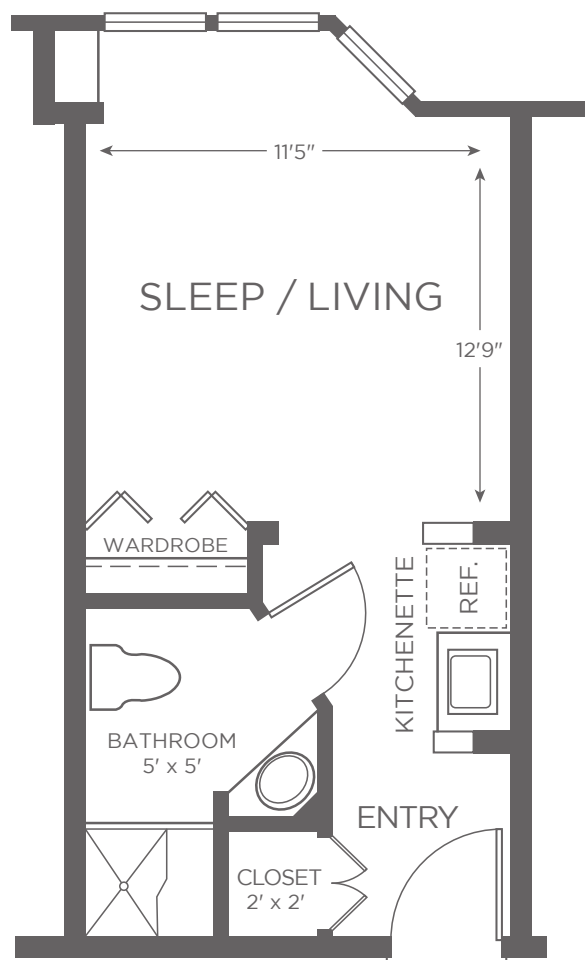
### STUDIO EMERALD

## Studio | 1 bath

Approximately 300 sf

### Features


- Kitchenette with mini-fridge and microwave
- Spacious closet
- Walk-in shower
- Window coverings
- Bay window
- Emergency pull cords



2/21

Apartment # \_\_\_\_\_ Current price \$ \_\_\_\_\_ Expires \_\_\_\_\_ Kisco associate initials \_\_\_\_\_

One time community fee \$ \_\_\_\_\_ Second occupancy monthly fee \$ \_\_\_\_\_ Pet monthly fee \$ \_\_\_\_\_ (if applicable)

Kisco Senior Living reserves the right to change pricing, delete or modify floor plans and specifications without notice or obligation. All square footage is approximate. 



# SERVICES

## ASSISTED LIVING



- Spacious apartments
- State of the art kitchenette with mini-fridge and microwave
- All day dining, three restaurant style meals in multiple dining venues
- Weekly Sunday brunch
- Saturday candlelight dinner
- Weekly housekeeping, linen service and valet trash removal
- Daily bedmaking
- Personal laundry (1 load per week)
- Seven day a week transportation
- Social gatherings, live entertainment and excursions
- State-of-the-art Wellness Center, including a variety of classes
- Utilities, basic cable and Wi-Fi included (excludes landline telephone)
- Six beautiful courtyards, with walking paths and raised garden beds
- On-site restaurant, BLU Bistro offering seasonal menu options
- 24 hour concierge, emergency and safety systems for peace of mind
- Pet-friendly with dedicated off-lease pet park
- Dedicated security systems onsite
- Emergency response systems, including personal pendant, with daily check-in
- Nutritional program with licensed Dietician
- Licensed nurse to oversee care plan
- Tenured, trained staff on-site, 24 hours a day



# FLOOR PLAN

## ASSISTED LIVING APARTMENTS

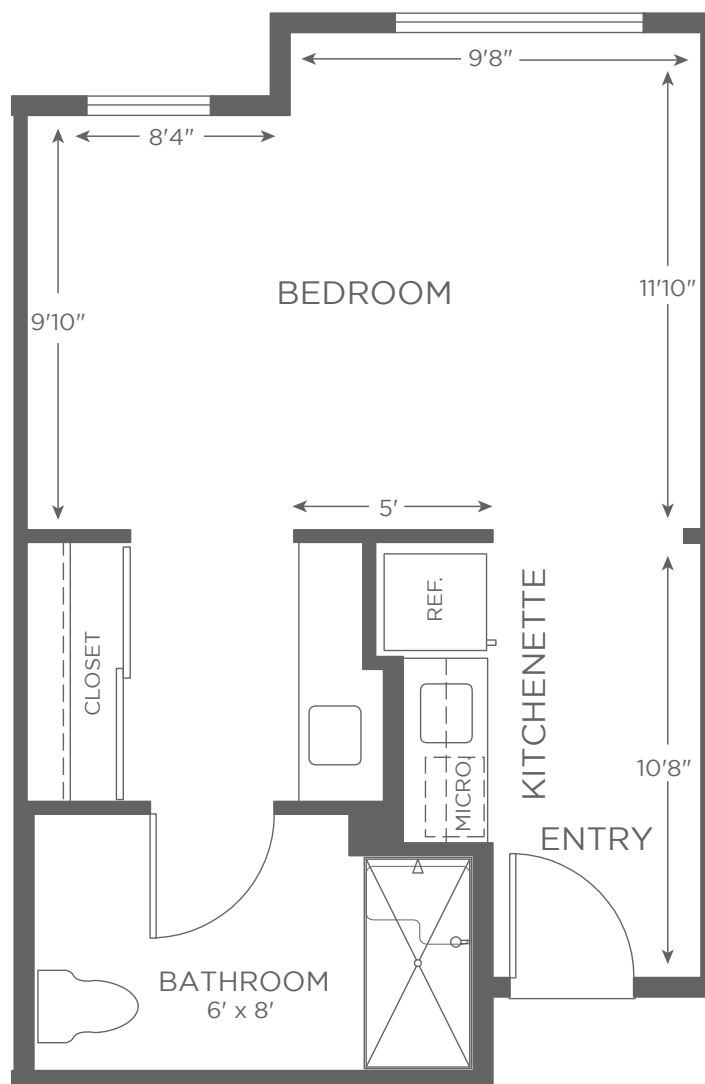
### STUDIO SAPPHIRE

### Studio | 1 bath

Approximately 405 sf

#### Features


- Central air and heat with individual climate control
- Kitchenette with refrigerator and microwave
- Spacious closet
- Walk-in shower
- Window coverings
- Emergency pull cords



2/21

Apartment # \_\_\_\_\_ Current price \$ \_\_\_\_\_ Expires \_\_\_\_\_ Kisco associate initials \_\_\_\_\_

One time community fee \$ \_\_\_\_\_ Second occupancy monthly fee \$ \_\_\_\_\_ Pet monthly fee \$ \_\_\_\_\_ (if applicable)

Kisco Senior Living reserves the right to change pricing, delete or modify floor plans and specifications without notice or obligation. All square footage is approximate. 



# SERVICES

## ASSISTED LIVING



- Spacious apartments
- State of the art kitchenette with mini-fridge and microwave
- All day dining, three restaurant style meals in multiple dining venues
- Weekly Sunday brunch
- Saturday candlelight dinner
- Weekly housekeeping, linen service and valet trash removal
- Daily bedmaking
- Personal laundry (1 load per week)
- Seven day a week transportation
- Social gatherings, live entertainment and excursions
- State-of-the-art Wellness Center, including a variety of classes
- Utilities, basic cable and Wi-Fi included (excludes landline telephone)
- Six beautiful courtyards, with walking paths and raised garden beds
- On-site restaurant, BLU Bistro offering seasonal menu options
- 24 hour concierge, emergency and safety systems for peace of mind
- Pet-friendly with dedicated off-lease pet park
- Dedicated security systems onsite
- Emergency response systems, including personal pendant, with daily check-in
- Nutritional program with licensed Dietician
- Licensed nurse to oversee care plan
- Tenured, trained staff on-site, 24 hours a day



# FLOOR PLAN

## ASSISTED LIVING APARTMENTS

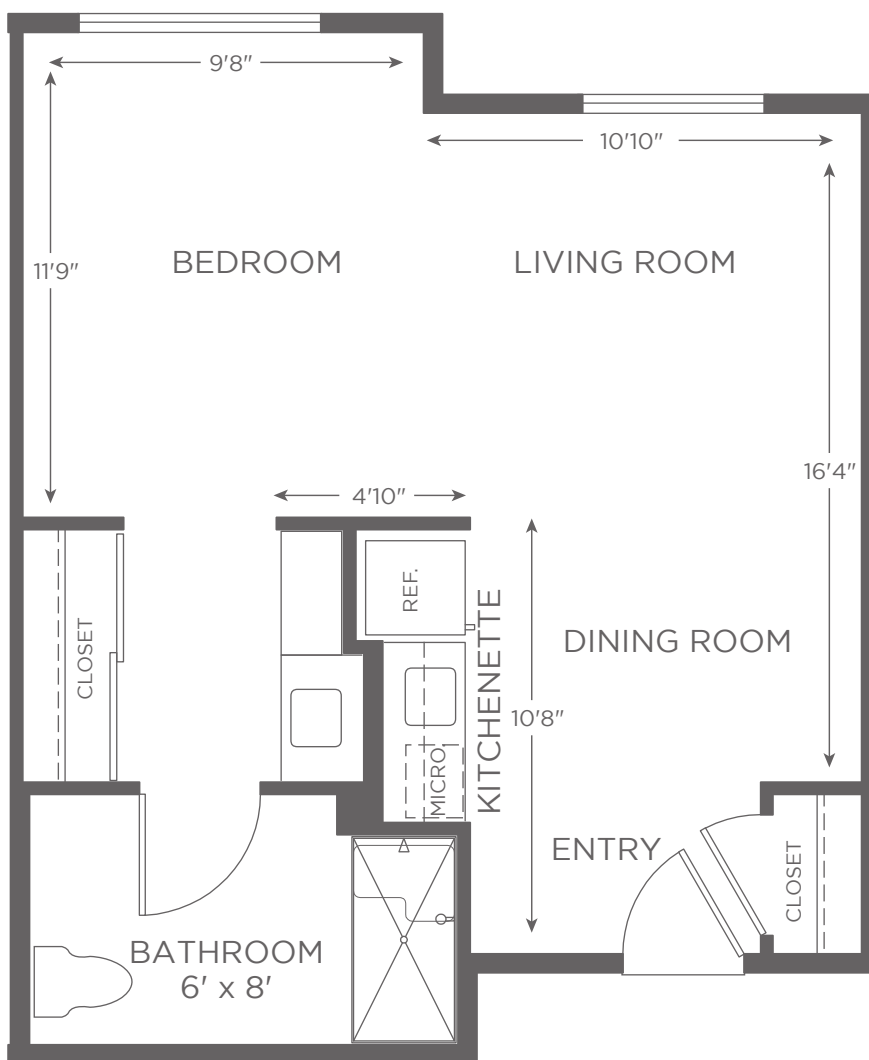
### STUDIO DELUXE SAPPHIRE

### Studio Deluxe | 1 bath

Approximately 480 sf - 500 sf

#### Features


- Central air and heat with individual climate control
- Kitchenette with refrigerator and microwave
- Spacious closet
- Walk-in shower
- Window coverings
- Emergency pull cords



2/21

Apartment # \_\_\_\_\_ Current price \$ \_\_\_\_\_ Expires \_\_\_\_\_ Kisco associate initials \_\_\_\_\_

One time community fee \$ \_\_\_\_\_ Second occupancy monthly fee \$ \_\_\_\_\_ Pet monthly fee \$ \_\_\_\_\_ (if applicable)

Kisco Senior Living reserves the right to change pricing, delete or modify floor plans and specifications without notice or obligation. All square footage is approximate. 





# SERVICES

## ASSISTED LIVING



- Spacious apartments
- State of the art kitchenette with mini-fridge and microwave
- All day dining, three restaurant style meals in multiple dining venues
- Weekly Sunday brunch
- Saturday candlelight dinner
- Weekly housekeeping, linen service and valet trash removal
- Daily bedmaking
- Personal laundry (1 load per week)
- Seven day a week transportation
- Social gatherings, live entertainment and excursions
- State-of-the-art Wellness Center, including a variety of classes
- Utilities, basic cable and Wi-Fi included (excludes landline telephone)
- Six beautiful courtyards, with walking paths and raised garden beds
- On-site restaurant, BLU Bistro offering seasonal menu options
- 24 hour concierge, emergency and safety systems for peace of mind
- Pet-friendly with dedicated off-lease pet park
- Dedicated security systems onsite
- Emergency response systems, including personal pendant, with daily check-in
- Nutritional program with licensed Dietician
- Licensed nurse to oversee care plan
- Tenured, trained staff on-site, 24 hours a day



# FLOOR PLAN

## ASSISTED LIVING APARTMENTS

### ONE BEDROOM

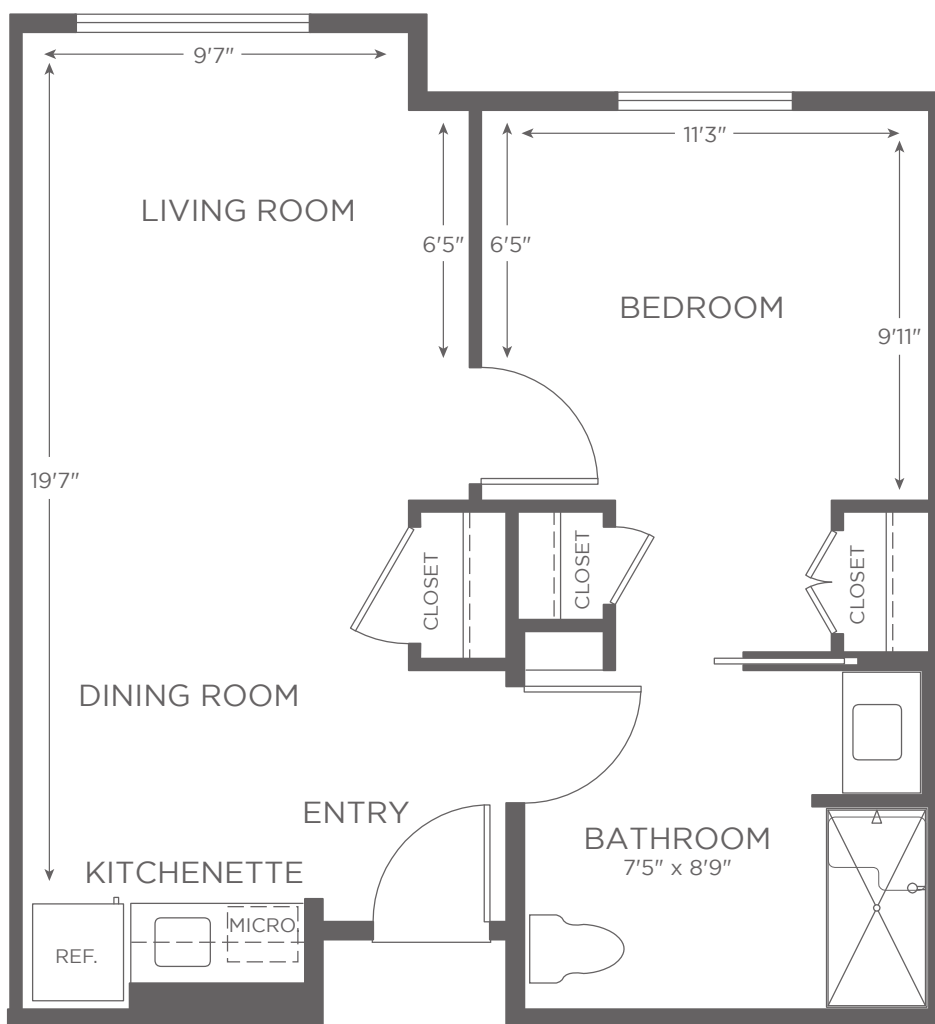
SAPPHIRE

## 1 Bedroom | 1 bath

Approximately 570 sf

### Features


- Central air and heat with individual climate control
- Kitchenette with refrigerator and microwave
- Spacious closets
- Walk-in shower
- Window coverings
- Emergency pull cords



2/21

Apartment # \_\_\_\_\_ Current price \$ \_\_\_\_\_ Expires \_\_\_\_\_ Kisco associate initials \_\_\_\_\_

One time community fee \$ \_\_\_\_\_ Second occupancy monthly fee \$ \_\_\_\_\_ Pet monthly fee \$ \_\_\_\_\_ (if applicable)

Kisco Senior Living reserves the right to change pricing, delete or modify floor plans and specifications without notice or obligation. All square footage is approximate. 



# SERVICES

## ASSISTED LIVING



- Spacious apartments
- Full-size kitchen with appliances
- All day dining, three restaurant style meals in multiple dining venues
- Weekly Sunday brunch
- Saturday candlelight dinner
- Weekly housekeeping, linen service and valet trash removal
- Daily bed making
- Personal laundry (1 load per week)
- Seven day a week transportation
- Social gatherings, live entertainment and excursions
- State-of-the-art Wellness Center, including a variety of classes
- Utilities, basic cable and Wi-Fi included (excludes landline telephone)
- Six beautiful courtyards, with walking paths and raised garden beds
- On-site restaurant, BLU Bistro offering seasonal menu options
- 24 hour concierge, emergency and safety systems for peace of mind
- Pet-friendly with dedicated off-lease pet park
- Dedicated security systems onsite
- Emergency response systems, including personal pendant, with daily check-in
- Nutritional program with licensed Dietician
- Licensed nurse to oversee care plan
- Tenured, trained staff on-site, 24 hours a day





# FLOOR PLAN

## ASSISTED LIVING APARTMENTS

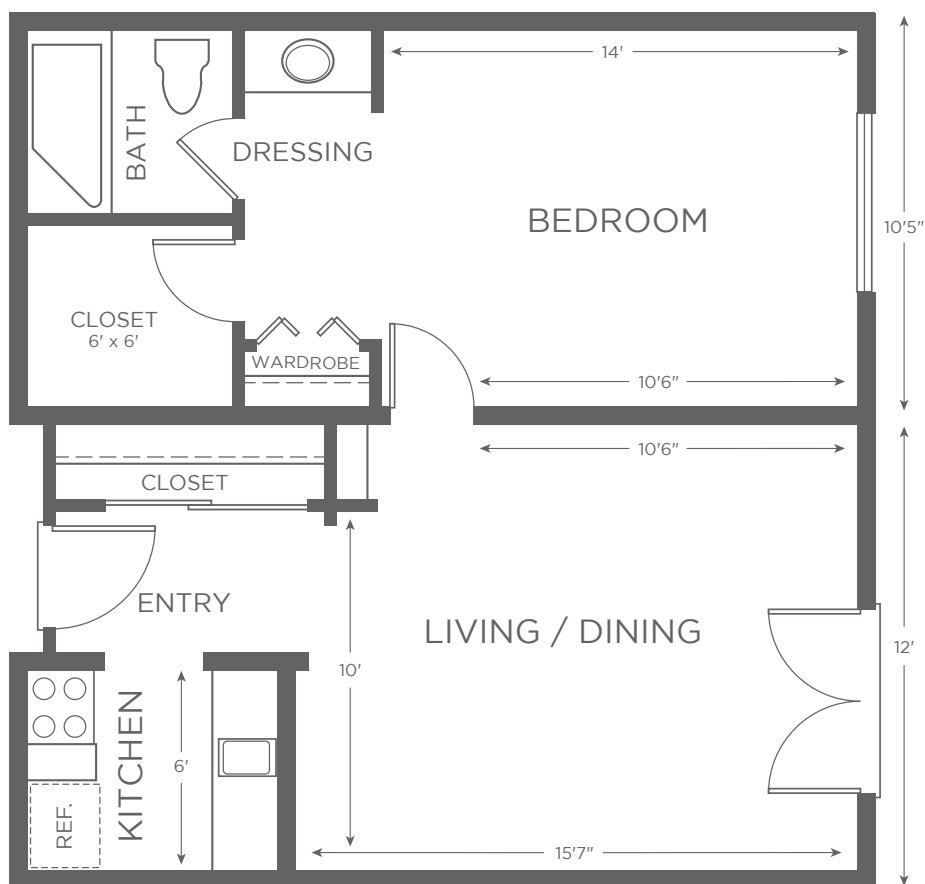
### ONE BEDROOM EMERALD

## 1 Bedroom | 1 bath

Approximately 600 sf

### Features


- Central air and heat with individual climate control
- Full-size kitchen with refrigerator, microwave and stove
- Spacious walk-in closet
- Step-in shower
- Window coverings
- Patio or balcony



2/21

Apartment # \_\_\_\_\_ Current price \$ \_\_\_\_\_ Expires \_\_\_\_\_ Kisco associate initials \_\_\_\_\_

One time community fee \$ \_\_\_\_\_ Second occupancy monthly fee \$ \_\_\_\_\_ Pet monthly fee \$ \_\_\_\_\_ (if applicable)

Kisco Senior Living reserves the right to change pricing, delete or modify floor plans and specifications without notice or obligation. All square footage is approximate. 



# SERVICES

## ASSISTED LIVING



- Spacious apartments
- State-of-the-art kitchen appliances with full size refrigerator and microwave
- All day dining, three restaurant style meals in multiple dining venues
- Weekly Sunday brunch
- Saturday candlelight dinner
- Weekly housekeeping, linen service and valet trash removal
- Daily bed making
- Personal laundry (1 load per week)
- Seven day a week transportation
- Social gatherings, live entertainment and excursions
- State-of-the-art Wellness Center, including a variety of classes
- Utilities, basic cable and Wi-Fi included (excludes landline telephone)
- Six beautiful courtyards, with walking paths and raised garden beds
- On-site restaurant, BLU Bistro offering seasonal menu options
- 24 hour concierge, emergency and safety systems for peace of mind
- Pet-friendly with dedicated off-lease pet park
- Dedicated security systems onsite
- Emergency response systems, including personal pendant, with daily check-in
- Nutritional program with licensed Dietician
- Licensed nurse to oversee care plan
- Tenured, trained staff on-site, 24 hours a day



# FLOOR PLAN

## ASSISTED LIVING APARTMENTS

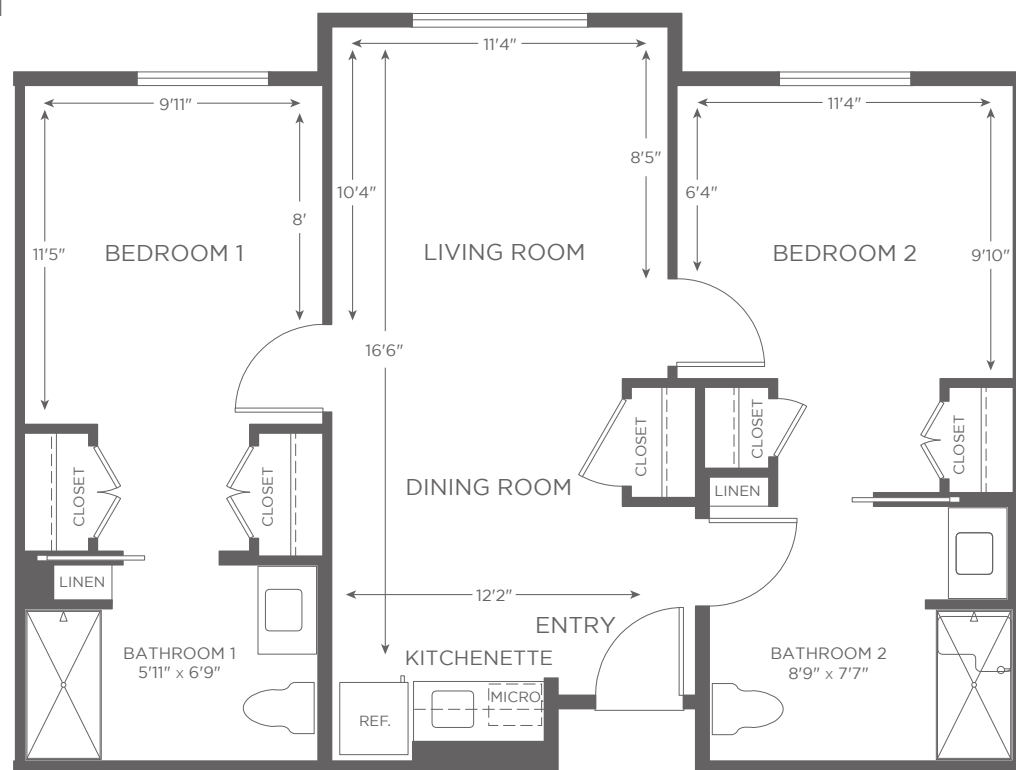
### TWO BEDROOM SAPPHIRE

## 2 Bedroom | 2 bath

Approximately 820 sf

### Features


- Central air and heat with individual climate control
- Kitchenette with refrigerator and microwave
- Spacious closets
- Walk-in showers
- Window coverings
- Emergency pull cords



2/21

Apartment # \_\_\_\_\_ Current price \$ \_\_\_\_\_ Expires \_\_\_\_\_ Kisco associate initials \_\_\_\_\_

One time community fee \$ \_\_\_\_\_ Second occupancy monthly fee \$ \_\_\_\_\_ Pet monthly fee \$ \_\_\_\_\_ (if applicable)

Kisco Senior Living reserves the right to change pricing, delete or modify floor plans and specifications without notice or obligation. All square footage is approximate. 



# SERVICES

## ASSISTED LIVING



- Spacious apartments
- Full-size kitchen with appliances
- All day dining, three restaurant style meals in multiple dining venues
- Weekly Sunday brunch
- Saturday candlelight dinner
- Weekly housekeeping, linen service and valet trash removal
- Daily bed making
- Personal laundry (1 load per week)
- Seven day a week transportation
- Social gatherings, live entertainment and excursions
- State-of-the-art Wellness Center, including a variety of classes
- Utilities, basic cable and Wi-Fi included (excludes landline telephone)
- Six beautiful courtyards, with walking paths and raised garden beds
- On-site restaurant, BLU Bistro offering seasonal menu options
- 24 hour concierge, emergency and safety systems for peace of mind
- Pet-friendly with dedicated off-lease pet park
- Dedicated security systems onsite
- Emergency response systems, including personal pendant, with daily check-in
- Nutritional program with licensed Dietician
- Licensed nurse to oversee care plan
- Tenured, trained staff on-site, 24 hours a day





# FLOOR PLAN

## ASSISTED LIVING APARTMENTS

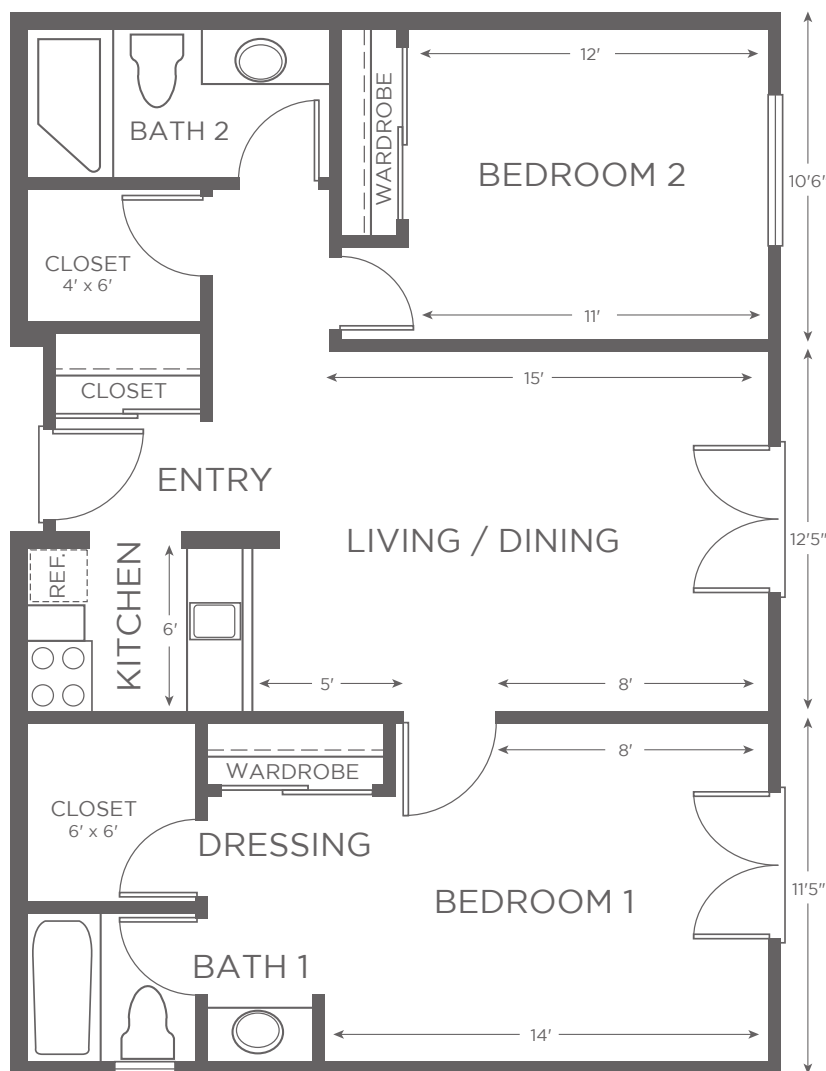
### TWO BEDROOM EMERALD

## 2 Bedroom | 2 bath

Approximately 900 sf

### Features


- Central air and heat with individual climate control
- Full-size kitchen with refrigerator, microwave and stove
- Spacious walk-in closets
- Step-in shower
- Window coverings
- Patio or balcony



2/21

Apartment # \_\_\_\_\_ Current price \$ \_\_\_\_\_ Expires \_\_\_\_\_ Kisco associate initials \_\_\_\_\_

One time community fee \$ \_\_\_\_\_ Second occupancy monthly fee \$ \_\_\_\_\_ Pet monthly fee \$ \_\_\_\_\_ (if applicable)

Kisco Senior Living reserves the right to change pricing, delete or modify floor plans and specifications without notice or obligation. All square footage is approximate. 



# SERVICES

## ASSISTED LIVING



- Spacious apartments
- Full-size kitchen with appliances
- All day dining, three restaurant style meals in multiple dining venues
- Weekly Sunday brunch
- Saturday candlelight dinner
- Weekly housekeeping, linen service and valet trash removal
- Daily bed making
- Personal laundry (1 load per week)
- Seven day a week transportation
- Social gatherings, live entertainment and excursions
- State-of-the-art Wellness Center, including a variety of classes
- Utilities, basic cable and Wi-Fi included (excludes landline telephone)
- Six beautiful courtyards, with walking paths and raised garden beds
- On-site restaurant, BLU Bistro offering seasonal menu options
- 24 hour concierge, emergency and safety systems for peace of mind
- Pet-friendly with dedicated off-lease pet park
- Dedicated security systems onsite
- Emergency response systems, including personal pendant, with daily check-in
- Nutritional program with licensed Dietician
- Licensed nurse to oversee care plan
- Tenured, trained staff on-site, 24 hours a day



# FLOOR PLAN

## ASSISTED LIVING APARTMENTS

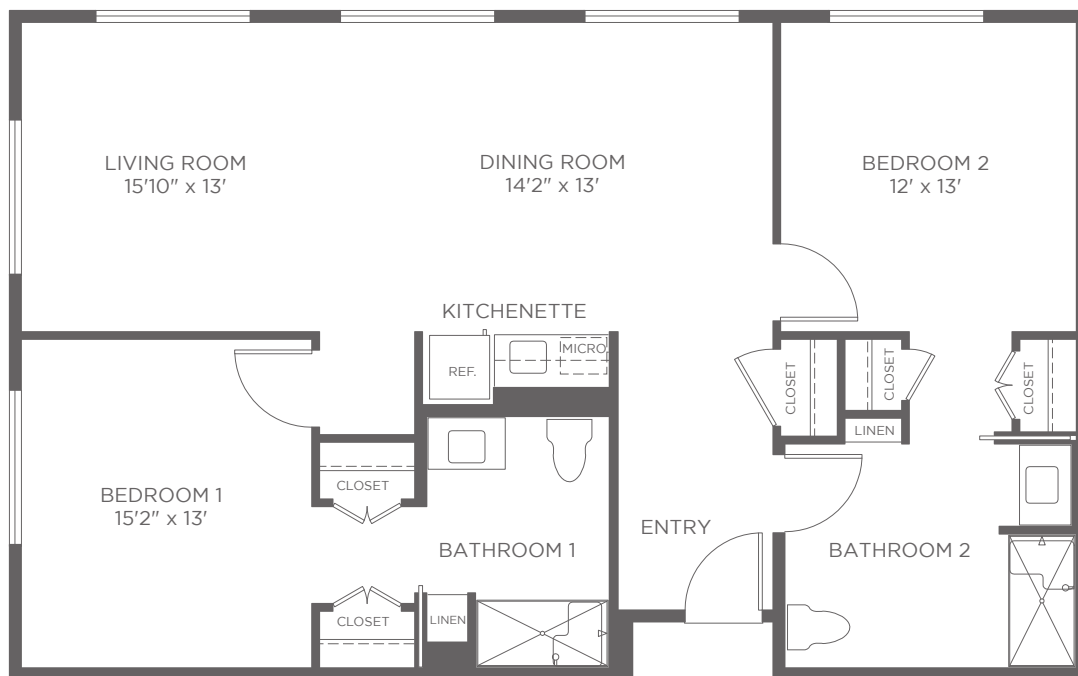
### 2 BEDROOM DELUXE SAPPHIRE

## 2 Bedroom | 2 bath

Approximately 1,050 sf

### Features


- Central air and heat with individual climate control
- Kitchenette with refrigerator and microwave
- Spacious closets
- Walk-in showers
- Window coverings
- Emergency pull cords



2/21

Apartment # \_\_\_\_\_ Current price \$ \_\_\_\_\_ Expires \_\_\_\_\_ Kisco associate initials \_\_\_\_\_

One time community fee \$ \_\_\_\_\_ Second occupancy monthly fee \$ \_\_\_\_\_ Pet monthly fee \$ \_\_\_\_\_ (if applicable)

Kisco Senior Living reserves the right to change pricing, delete or modify floor plans and specifications without notice or obligation. All square footage is approximate. 



# SERVICES

## ASSISTED LIVING



- Spacious apartments
- Full-size kitchen with appliances
- All day dining, three restaurant style meals in multiple dining venues
- Weekly Sunday brunch
- Saturday candlelight dinner
- Weekly housekeeping, linen service and valet trash removal
- Daily bed making
- Personal laundry (1 load per week)
- Seven day a week transportation
- Social gatherings, live entertainment and excursions
- State-of-the-art Wellness Center, including a variety of classes
- Utilities, basic cable and Wi-Fi included (excludes landline telephone)
- Six beautiful courtyards, with walking paths and raised garden beds
- On-site restaurant, BLU Bistro offering seasonal menu options
- 24 hour concierge, emergency and safety systems for peace of mind
- Pet-friendly with dedicated off-lease pet park
- Dedicated security systems onsite
- Emergency response systems, including personal pendant, with daily check-in
- Nutritional program with licensed Dietician
- Licensed nurse to oversee care plan
- Tenured, trained staff on-site, 24 hours a day