



# FLOOR PLAN

CONNECTIONS | MEMORY CARE  
MOUNTAIN VIEW COTTAGE HOMES

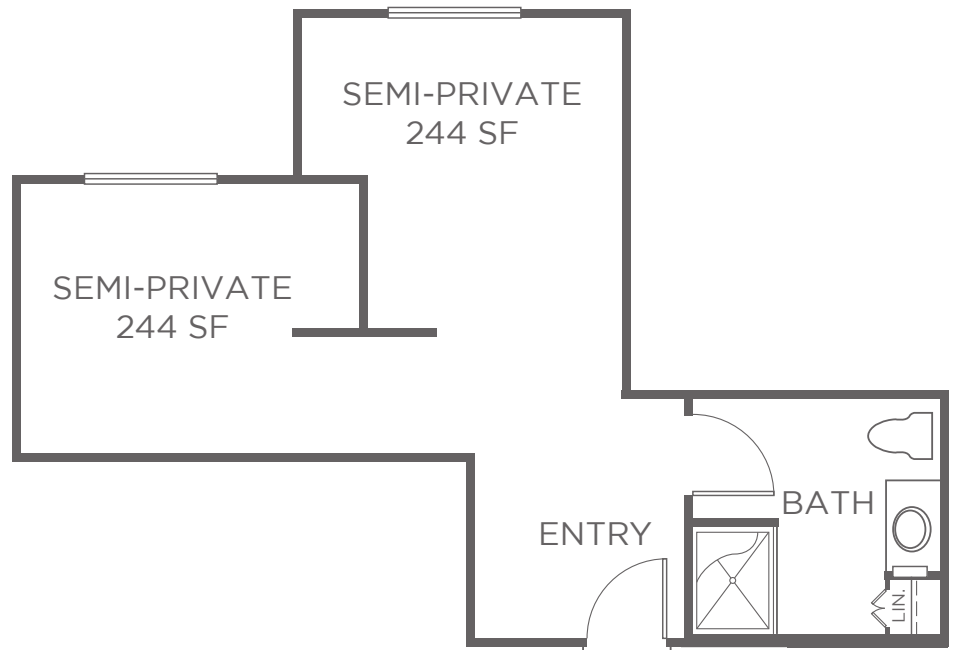
NOGAL & CARRIZO

## Shared Studio

Approximately 244 sf

### Features

- Air conditioning and heating with individual climate control
- ADA accessible shower in each cottage
- Window coverings
- Shared bath
- Intimate common dining and living area per cottage household
- Private salon with fireplace



9/20

Apartment # \_\_\_\_\_ Current price \$ \_\_\_\_\_ Expires \_\_\_\_\_ Kisco associate initials \_\_\_\_\_

One time community fee \$ \_\_\_\_\_ Second occupancy monthly fee \$ \_\_\_\_\_ Pet monthly fee \$ \_\_\_\_\_ (if applicable)

Kisco Senior Living reserves the right to change pricing, delete or modify floor plans and specifications without notice or obligation. All square footage is approximate.

21952 Buena Suerte  
Rancho Santa Margarita, CA 92688  
855.730.7030

LifeatParkTerrace.com  
Facebook.com/ParkTerrace  
License #306001157

Connections  
at Park Terrace   
A KISCO MEMORY CARE NEIGHBORHOOD



# FLOOR PLAN

CONNECTIONS | MEMORY CARE  
MOUNTAIN VIEW COTTAGE HOMES

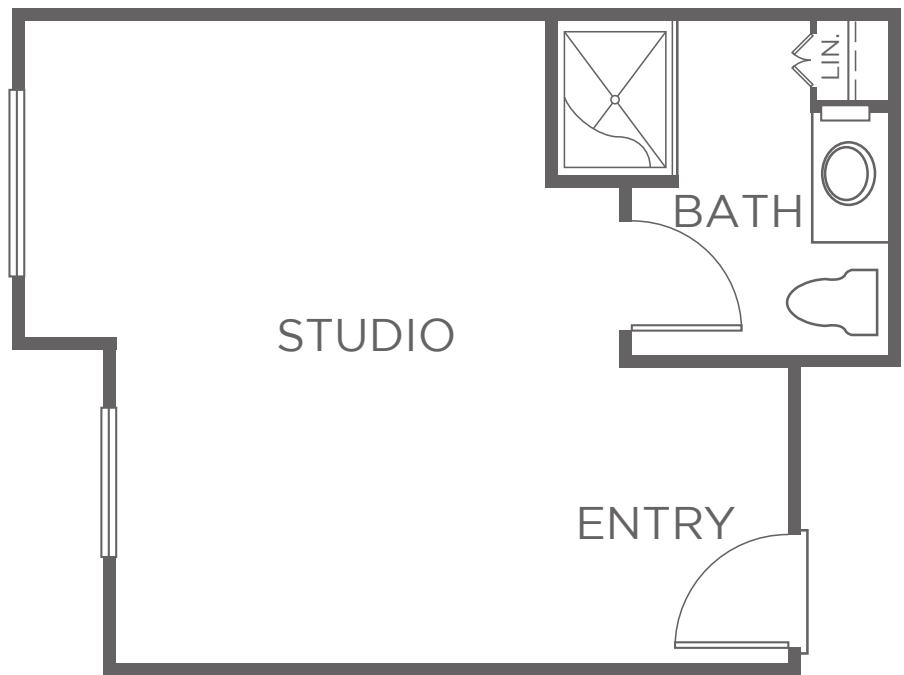
PINOS

## Studio | 1 bath

Approximately 485 sf

### Features

- Air conditioning and heating with individual climate control
- ADA accessible shower in each cottage
- Window coverings
- Intimate common dining and living area per cottage household
- Private salon with fireplace



9/20


Apartment # \_\_\_\_\_ Current price \$ \_\_\_\_\_ Expires \_\_\_\_\_ Kisco associate initials \_\_\_\_\_

One time community fee \$ \_\_\_\_\_ Second occupancy monthly fee \$ \_\_\_\_\_ Pet monthly fee \$ \_\_\_\_\_ (if applicable)

Kisco Senior Living reserves the right to change pricing, delete or modify floor plans and specifications without notice or obligation. All square footage is approximate. ©

21952 Buena Suerte  
Rancho Santa Margarita, CA 92688  
855.730.7030

LifeatParkTerrace.com  
Facebook.com/ParkTerrace  
License #306001157

Connections  
at Park Terrace   
A KISCO MEMORY CARE NEIGHBORHOOD



# FLOOR PLAN

CONNECTIONS | MEMORY CARE  
MOUNTAIN VIEW COTTAGE HOMES

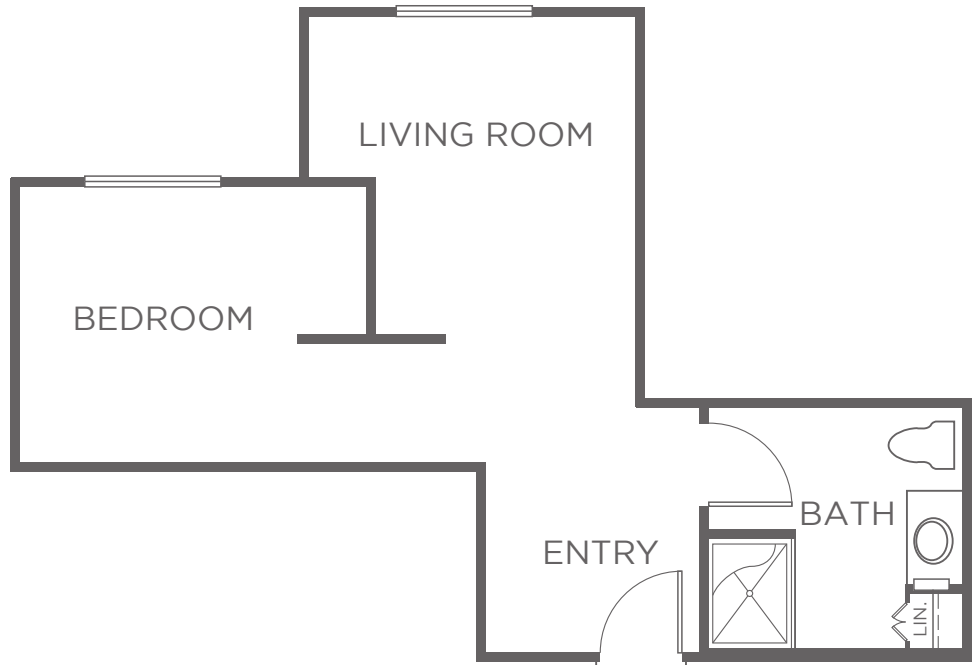
## PALMERA

### 1 Bedroom | 1 bath

Approximately 588 sf

#### Features

- Air conditioning and heating with individual climate control
- ADA accessible shower in each cottage
- Window coverings
- Intimate common dining and living area per cottage household
- Private salon with fireplace



9/20

Apartment # \_\_\_\_\_ Current price \$ \_\_\_\_\_ Expires \_\_\_\_\_ Kisco associate initials \_\_\_\_\_

One time community fee \$ \_\_\_\_\_ Second occupancy monthly fee \$ \_\_\_\_\_ Pet monthly fee \$ \_\_\_\_\_ (if applicable)

Kisco Senior Living reserves the right to change pricing, delete or modify floor plans and specifications without notice or obligation. All square footage is approximate.

21952 Buena Suerte  
Rancho Santa Margarita, CA 92688  
855.730.7030

LifeatParkTerrace.com  
Facebook.com/ParkTerrace  
License #306001157

Connections  
at Park Terrace   
A KISCO MEMORY CARE NEIGHBORHOOD

# SERVICES

## CONNECTIONS | MEMORY CARE



- Person-centered care by associates specially trained in recognizing and providing for individualized needs of residents coping with moderate to advanced cognitive impairment
- Care associates available 24 hours a day
- Dedicated wellness staff delivers ongoing state-of-the-art Wellness program
- Free Wi-Fi throughout the community
- Three meals per day which includes a healthy, nutritional program
- Nutritious snacks and fresh fruit always available
- Housekeeping and laundry services
- 24-hour front desk staff / management on duty 7 days a week
- Apartment maintenance 7 days a week
- Scheduled transportation with chauffeured van and town car to medical appointments and errands
- Planned social and educational events as well as day trips
- On-site beauty salon
- Emergency response system
- One-touch pendant available
- Lush green landscaping and walking paths throughout a secure courtyard