



FLOOR PLAN

MEMORY CARE SUITES

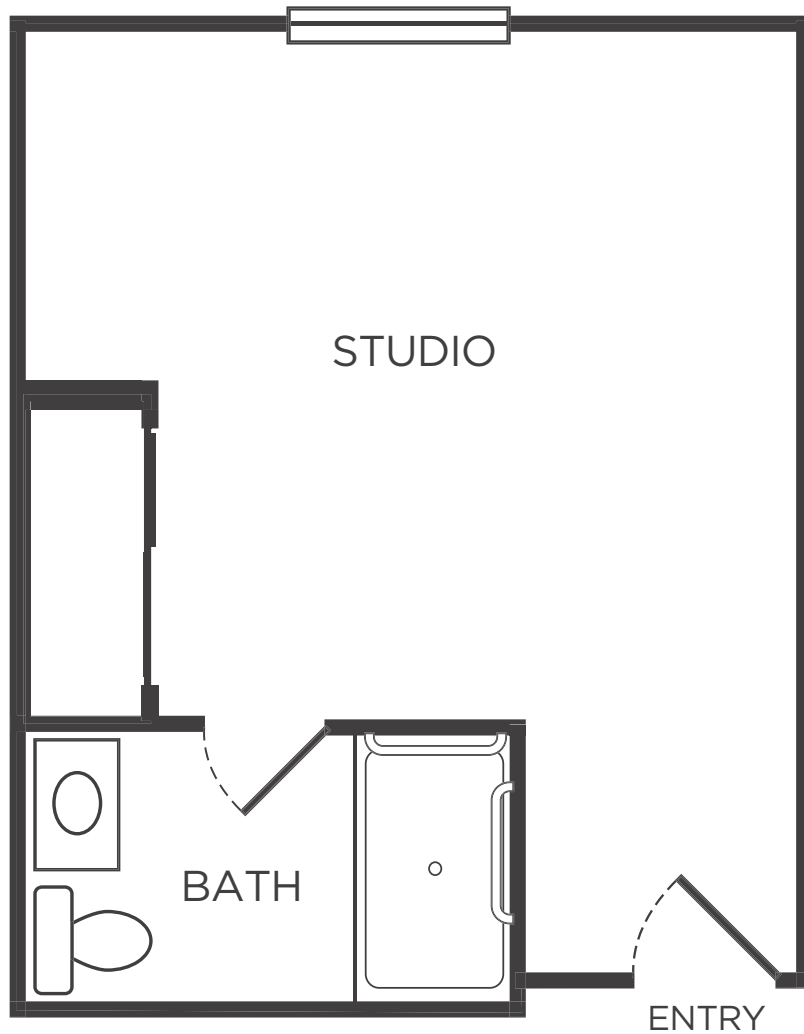
STUDIO

Studio | 1 bath

Approximately 288 sf

Features

- Air conditioning and heating with individual climate control
- Grab bars in bathroom / shower
- Window coverings
- Cable / telephone outlets



4/21

Suite # _____ Current price \$ _____ Expires _____ Kisco associate initial _____

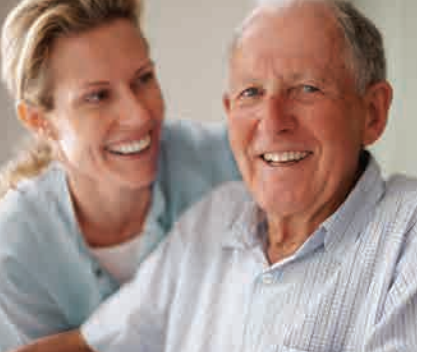
One time community fee \$ _____ Second occupancy monthly fee \$ _____ Pet monthly fee \$ _____ (if applicable)

Kisco Senior Living reserves the right to change pricing, delete or modify floor plans and specifications without notice or obligation. All square footage is approximate. ©

1 Witherspoon
Irvine, California 92604
phone: 949.654.8500
fax: 949.654.8507

LifeatWoodbridge.com
Facebook.com/WoodbridgeTerrace
License #306005290





FLOOR PLAN

MEMORY CARE SUITES

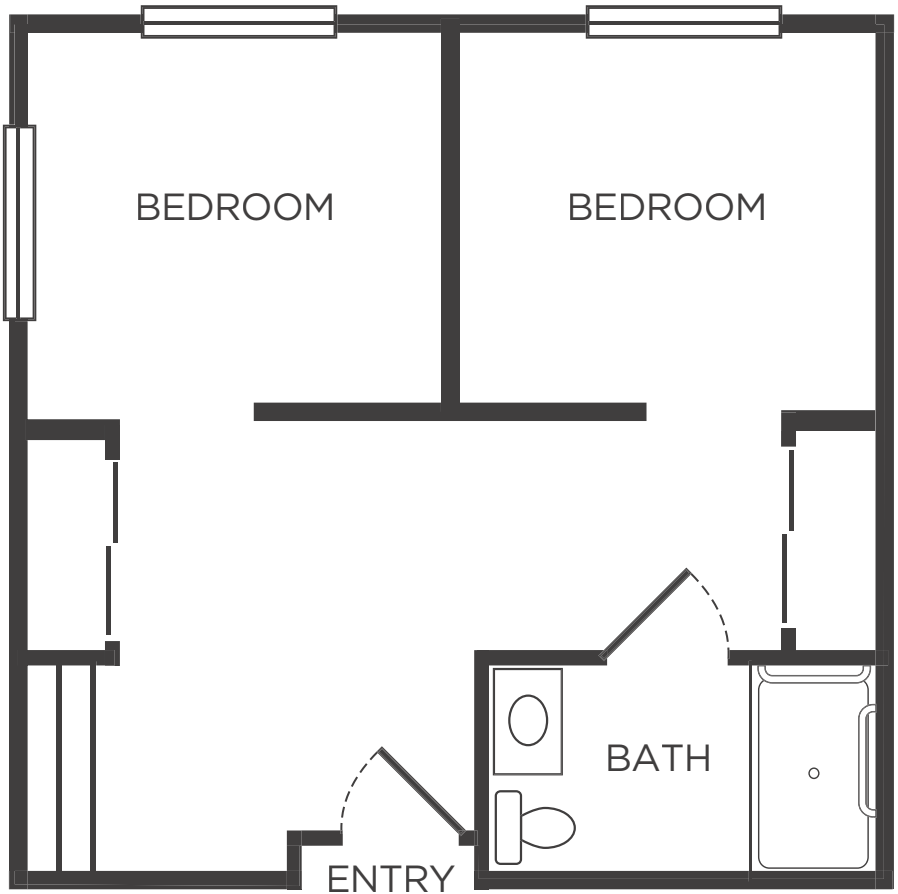
SHARED SUITE

2 Bedroom | 1 bath

Approximately 440 sf - 540 sf

Features

- Air conditioning and heating with individual climate control
- Grab bars in bathroom / bathtub
- Window coverings
- Cable / telephone outlets



4/21

Suite # _____ Current price \$ _____ Expires _____ Kisco associate initial _____

One time community fee \$ _____ Second occupancy monthly fee \$ _____ Pet monthly fee \$ _____ (if applicable)

Kisco Senior Living reserves the right to change pricing, delete or modify floor plans and specifications without notice or obligation. All square footage is approximate. ©

1 Witherspoon
Irvine, California 92604
phone: 949.654.8500
fax: 949.654.8507

LifeatWoodbridge.com
Facebook.com/WoodbridgeTerrace
License #306005290





SERVICES

MEMORY CARE



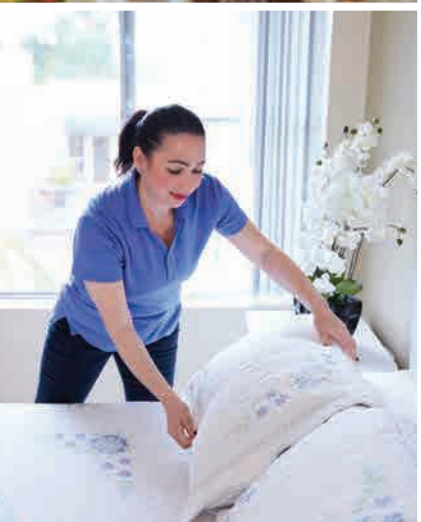
DINING:

- Family style restaurant dining, with menu variety and assistance choosing options when needed
- Diabetic and heart healthy menu options always available
- Beverages and snacks for order/delivery available



CARE AND WELLNESS:

- 24-hour licensed vocational nurses, certified nurse assistants and certified care givers on staff
- Personalized care services, including bathing, dressing, grooming and medication management
- Available two-person assist and Hoyer lifts
- Diabetic medication and injection management
- Supportive guidance for residents and families, including regularly scheduled care assessments
- Emergency Response System with individual pendants
- On-site partnership with visiting medical practitioners to include visiting Neurologist, Gerontologist, Pediatricists, hospice, mobile imaging, physical therapy, occupational therapy and speech therapy
- 24/7 manager on duty



LIFESTYLE:

- Signature Art of Living Well® programs focusing on intellectual, spiritual, vocational, physical, emotional and social wellbeing
- Planned social and educational events and day trips
- All utilities including expanded cable, secured Wi-Fi, and telephone service with dedicated lines to dining venues and front desk included
- Transportation available by reservation to shopping and medical appointments
- Balance and mobility programs
- Beauty Salon, including hair and nail services
- Weekly housekeeping, linen service, personal laundry and available trash removal
- 24/7 apartment maintenance services available

