



# FLOOR PLAN

## INDEPENDENT LIVING RESIDENCES

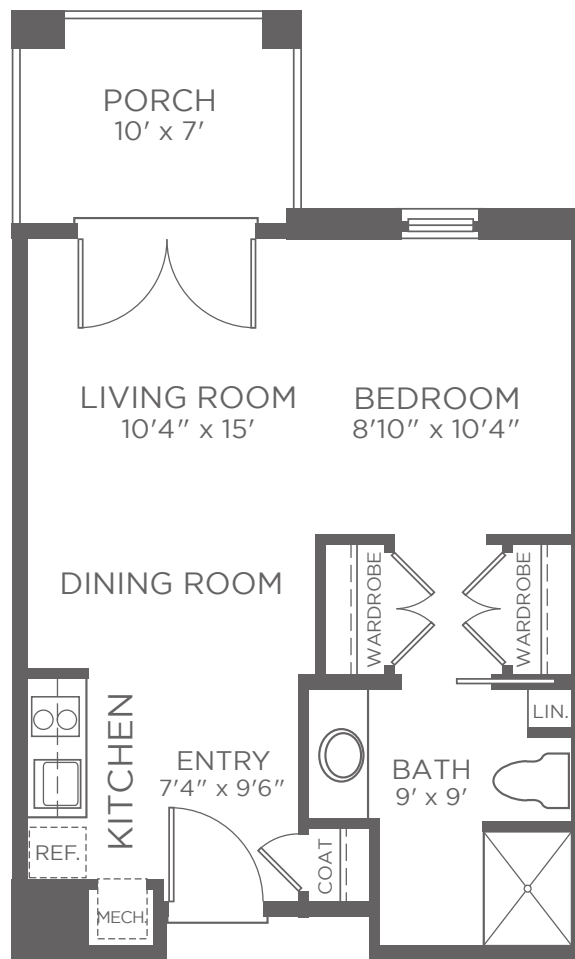
### FRANKLIN

### Studio | 1 bath

Approximately 492 sf

#### Features

- Air conditioning with individual climate control
- Refrigerator
- Two-burner cook top
- Granite countertops
- Built in microwave / convection oven
- 9 foot ceilings
- Superior natural light
- Step-in shower with seat
- Grab bars throughout
- Window coverings
- Porches / balconies (on select units)



8/20

Apartment # \_\_\_\_\_ Current price \$ \_\_\_\_\_ Expires \_\_\_\_\_ Kisco associate initials \_\_\_\_\_

One time community fee \$ \_\_\_\_\_ Second occupancy monthly fee \$ \_\_\_\_\_ Pet monthly fee \$ \_\_\_\_\_ (if applicable)

Kisco Senior Living reserves the right to change pricing, delete or modify floor plans and specifications without notice or obligation. All square footage is approximate. ©



# FLOOR PLAN

## INDEPENDENT LIVING RESIDENCES

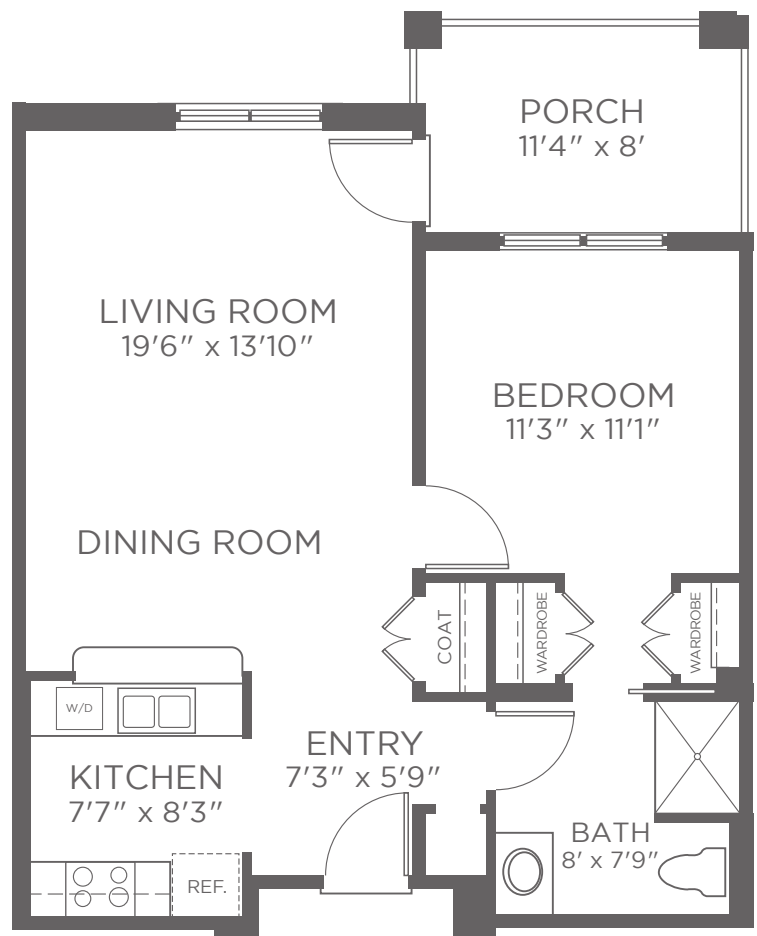
### ALEXANDER

### 1 Bedroom | 1 bath

Approximately 703 sf

#### Features

- Air conditioning with individual climate control
- Full-size refrigerator
- Four-burner cook top
- Granite countertops
- Dual kitchen sink
- Washer and dryer combination
- Spacious closets
- Step-in shower
- Window coverings
- Porch with lake view



8/20

Apartment # \_\_\_\_\_ Current price \$ \_\_\_\_\_ Expires \_\_\_\_\_ Kisco associate initials \_\_\_\_\_

One time community fee \$ \_\_\_\_\_ Second occupancy monthly fee \$ \_\_\_\_\_ Pet monthly fee \$ \_\_\_\_\_ (if applicable)

Kisco Senior Living reserves the right to change pricing, delete or modify floor plans and specifications without notice or obligation. All square footage is approximate. ©



# FLOOR PLAN

## INDEPENDENT LIVING RESIDENCES

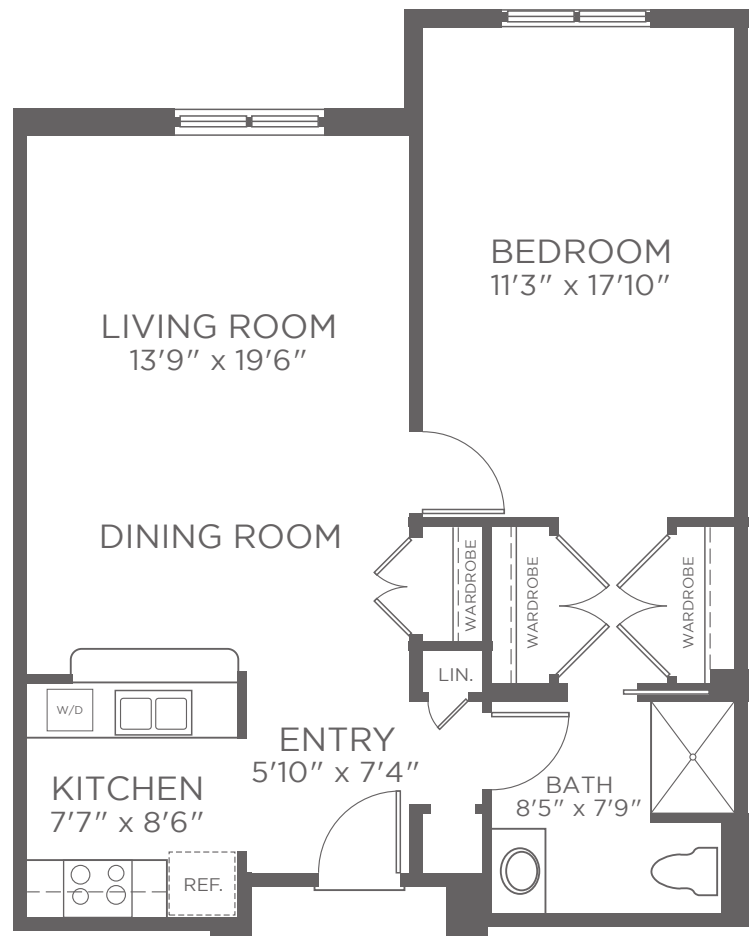
### RICHMOND

### 1 Bedroom | 1 bath

Approximately 800 sf

#### Features

- Air conditioning with individual climate control
- Full-size refrigerator
- Four-burner cook top
- Granite countertops
- Dual kitchen sink
- Washer and dryer combination
- Spacious closets
- Step-in shower
- Window coverings



8/20

Apartment # \_\_\_\_\_ Current price \$ \_\_\_\_\_ Expires \_\_\_\_\_ Kisco associate initials \_\_\_\_\_

One time community fee \$ \_\_\_\_\_ Second occupancy monthly fee \$ \_\_\_\_\_ Pet monthly fee \$ \_\_\_\_\_ (if applicable)

Kisco Senior Living reserves the right to change pricing, delete or modify floor plans and specifications without notice or obligation. All square footage is approximate. ©

300 Kildaire Woods Drive  
Cary, North Carolina 27511  
919.465.0356

LifeatWoodlandTerrace.com  
Facebook.com/WoodlandTerrace





# FLOOR PLAN

INDEPENDENT LIVING RESIDENCES

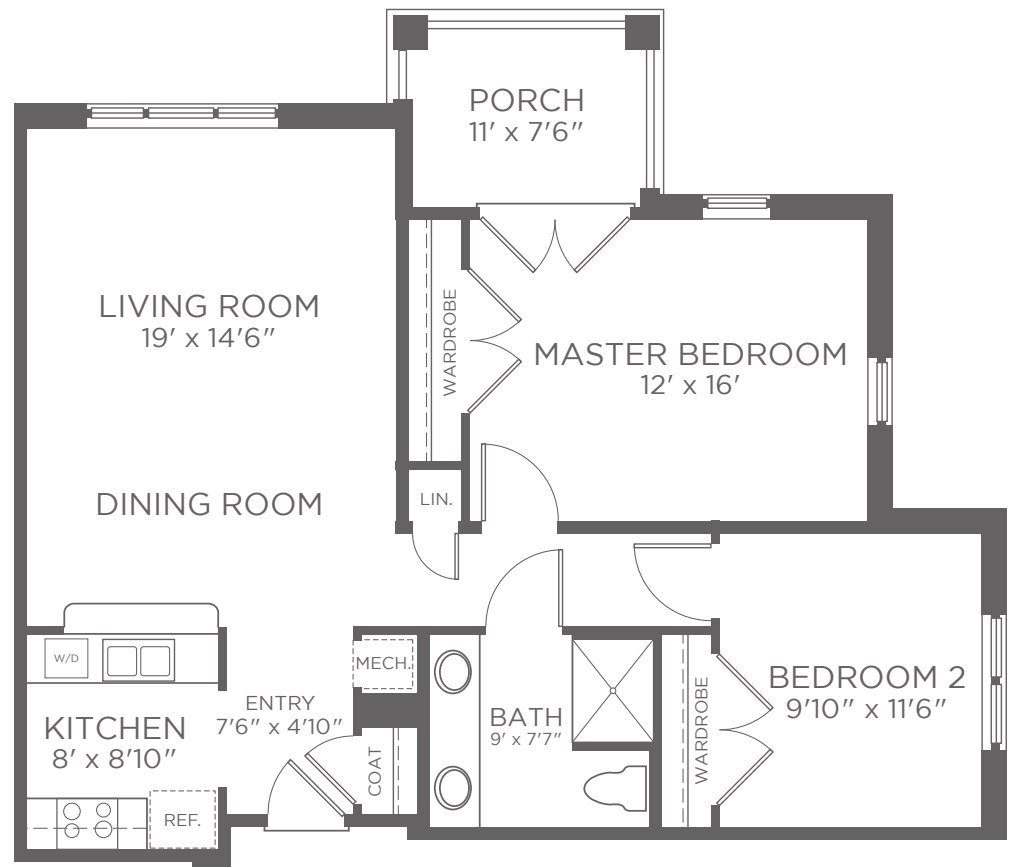
## MONTGOMERY

### 2 Bedroom | 1 bath

Approximately 975 sf

#### Features

- Air conditioning with individual climate control
- Full-size refrigerator
- Four-burner cook top
- Granite countertops
- Dual kitchen sink
- Washer and dryer combination
- Spacious closets
- Step-in shower
- Window coverings
- Porch with lake view\*



\*Lake view in select models

8/20

Apartment # \_\_\_\_\_ Current price \$ \_\_\_\_\_ Expires \_\_\_\_\_ Kisco associate initials \_\_\_\_\_

One time community fee \$ \_\_\_\_\_ Second occupancy monthly fee \$ \_\_\_\_\_ Pet monthly fee \$ \_\_\_\_\_ (if applicable)

Kisco Senior Living reserves the right to change pricing, delete or modify floor plans and specifications without notice or obligation. All square footage is approximate. ©

300 Kildaire Woods Drive  
Cary, North Carolina 27511  
919.465.0356

LifeatWoodlandTerrace.com  
Facebook.com/WoodlandTerrace

Woodland  
Terrace   
A KISCO COMMUNITY



# FLOOR PLAN

## INDEPENDENT LIVING RESIDENCES

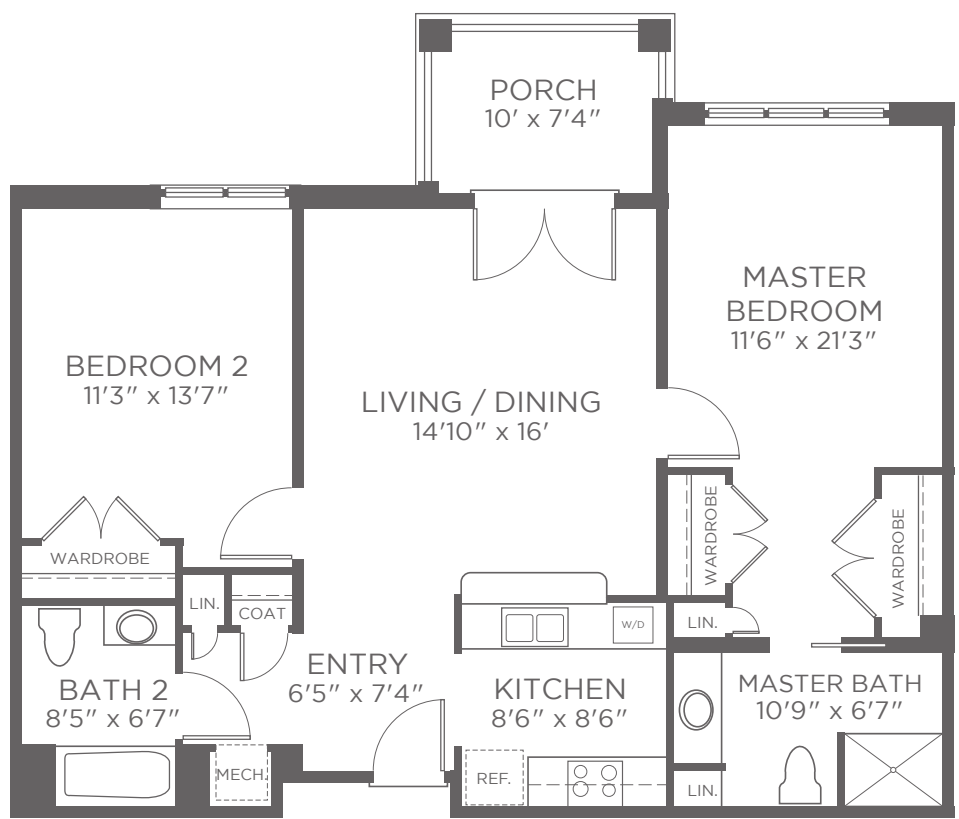
### BRUNSWICK

## 2 Bedroom | 2 bath

Approximately 1,050 sf

### Features

- Air conditioning with individual climate control
- Full-size refrigerator
- Four-burner cook top
- Granite countertops
- Dual kitchen sink
- Washer and dryer combination
- Spacious closets
- Step-in shower (master bath)
- Shower / tub combination (bath 2)
- Window coverings
- Porch with lake view\*



\*Lake view in select models

Apartment # \_\_\_\_\_ Current price \$ \_\_\_\_\_ Expires \_\_\_\_\_ Kisco associate initials \_\_\_\_\_

One time community fee \$ \_\_\_\_\_ Second occupancy monthly fee \$ \_\_\_\_\_ Pet monthly fee \$ \_\_\_\_\_ (if applicable)

Kisco Senior Living reserves the right to change pricing, delete or modify floor plans and specifications without notice or obligation. All square footage is approximate. ©



# FLOOR PLAN

## INDEPENDENT LIVING RESIDENCES

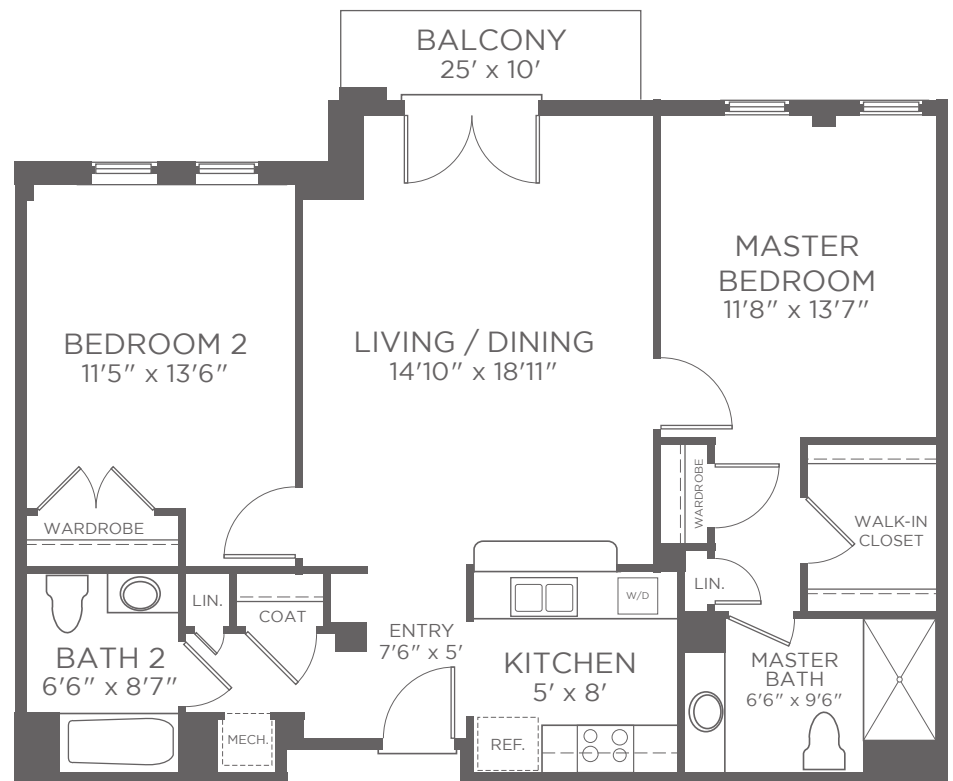
### MECKLENBERG

### 2 Bedroom | 2 bath

Approximately 1,190 sf

#### Features

- Air conditioning with individual climate control
- Full-size refrigerator
- Four-burner cook top
- Granite countertops
- Dual kitchen sink
- Washer and dryer combination
- Spacious closets
- Step-in shower (master bath)
- Shower / tub combination (bath 2)
- Window coverings
- Balcony with lake view



8/20

Apartment # \_\_\_\_\_ Current price \$ \_\_\_\_\_ Expires \_\_\_\_\_ Kisco associate initials \_\_\_\_\_

One time community fee \$ \_\_\_\_\_ Second occupancy monthly fee \$ \_\_\_\_\_ Pet monthly fee \$ \_\_\_\_\_ (if applicable)

Kisco Senior Living reserves the right to change pricing, delete or modify floor plans and specifications without notice or obligation. All square footage is approximate. ©



# FLOOR PLAN

INDEPENDENT LIVING RESIDENCES

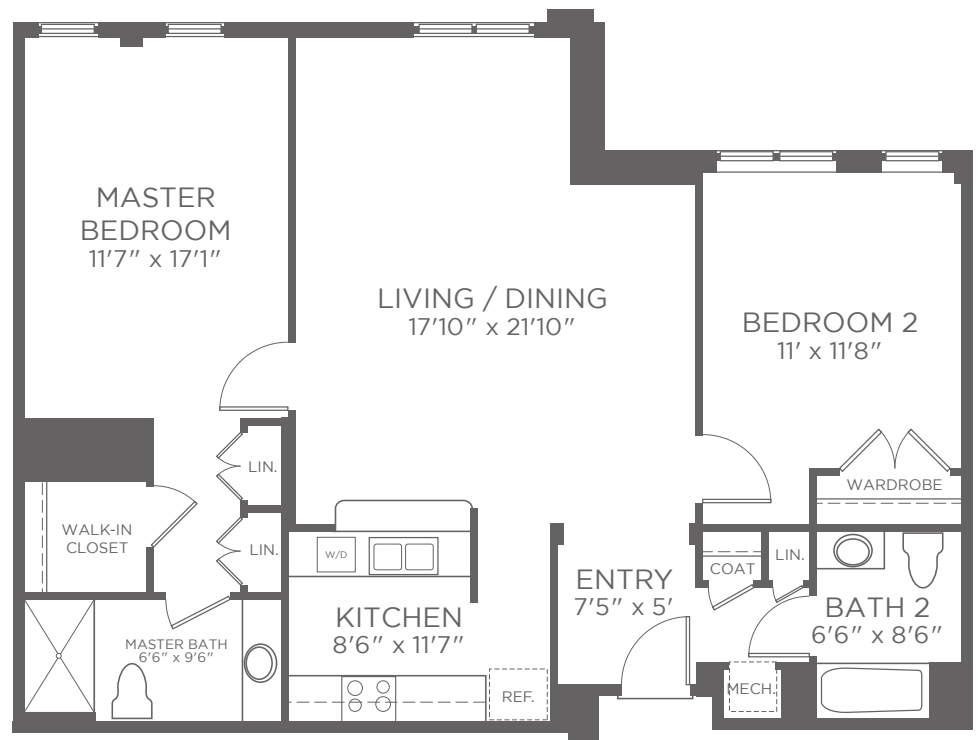
WAKE

## 2 Bedroom | 2 bath

Approximately 1,300 sf

### Features

- Air conditioning with individual climate control
- Full-size refrigerator
- Four-burner cook top
- Granite countertops
- Dual kitchen sink
- Washer and dryer combination
- Spacious closets
- Step-in shower (master bath)
- Shower / tub combination (bath 2)
- Window coverings



8/20

Apartment # \_\_\_\_\_ Current price \$ \_\_\_\_\_ Expires \_\_\_\_\_ Kisco associate initials \_\_\_\_\_

One time community fee \$ \_\_\_\_\_ Second occupancy monthly fee \$ \_\_\_\_\_ Pet monthly fee \$ \_\_\_\_\_ (if applicable)

Kisco Senior Living reserves the right to change pricing, delete or modify floor plans and specifications without notice or obligation. All square footage is approximate. ©



# SERVICES

## INDEPENDENT LIVING



- Award-winning dining program
- Restaurant style dining in multiple venues
- Daily continental breakfast plus choice of lunch or dinner
- Weekly housekeeping and linen service
- Standard cable, utilities, and telephone
- Wi-Fi included
- Emergency response system
- 24-hour security / front desk staff / manager on duty 7 days a week
- Daily check-in service
- Scheduled transportation-shopping and medical appointments
- Signature Art of Living Well® programs
- Library with computer access
- Planned social and educational events as well as day trips
- Balance and mobility programs
- Fitness center with indoor heated pool

### Optional Services

- On-site physician services
- On-site home care
- Outpatient rehabilitation
- On-site salon services







# FLOOR PLAN

## INDEPENDENT LIVING COTTAGES

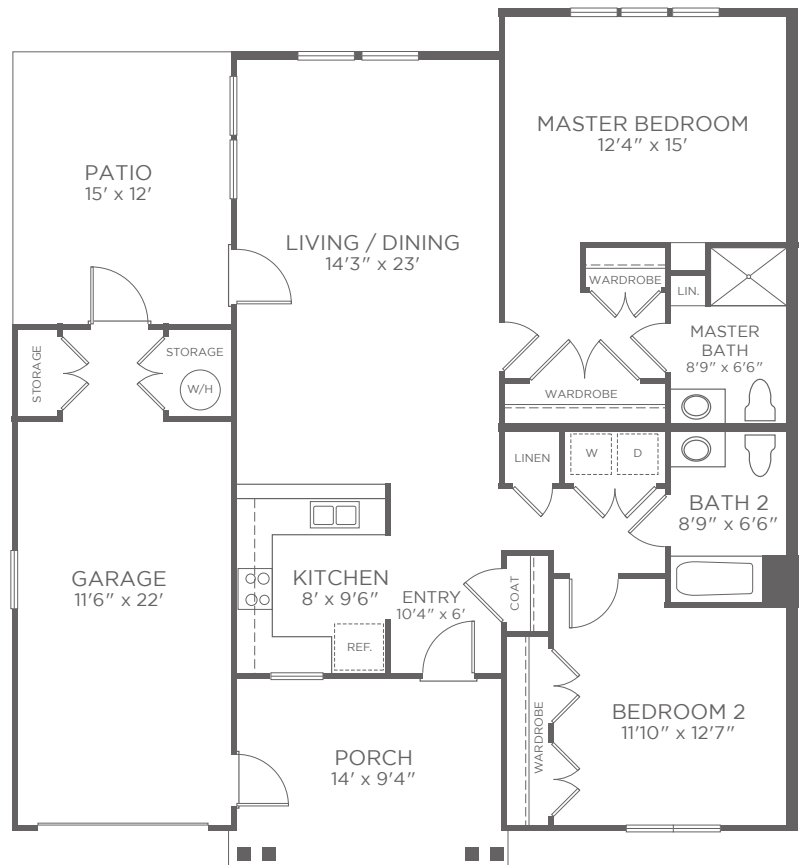
### LAKEVIEW

## 2 Bedroom | 2 bath

Approximately 1,200 sf

### Features

- Spacious floor plan
- Air conditioning with individual climate control
- Fully equipped kitchen including: refrigerator, dishwasher and four-burner cook top
- Built in microwave / convection oven
- Granite countertops
- Washer and dryer
- Spacious closets
- Step-in shower (master bath)
- Shower / tub combination (bath 2)
- Window coverings
- Spacious patio and screened-in porch
- Garage with extra storage



8/20

Apartment # \_\_\_\_\_ Current price \$ \_\_\_\_\_ Expires \_\_\_\_\_ Kisco associate initials \_\_\_\_\_

One time community fee \$ \_\_\_\_\_ Second occupancy monthly fee \$ \_\_\_\_\_ Pet monthly fee \$ \_\_\_\_\_ (if applicable)

Kisco Senior Living reserves the right to change pricing, delete or modify floor plans and specifications without notice or obligation. All square footage is approximate. ©



# FLOOR PLAN

## INDEPENDENT LIVING COTTAGES

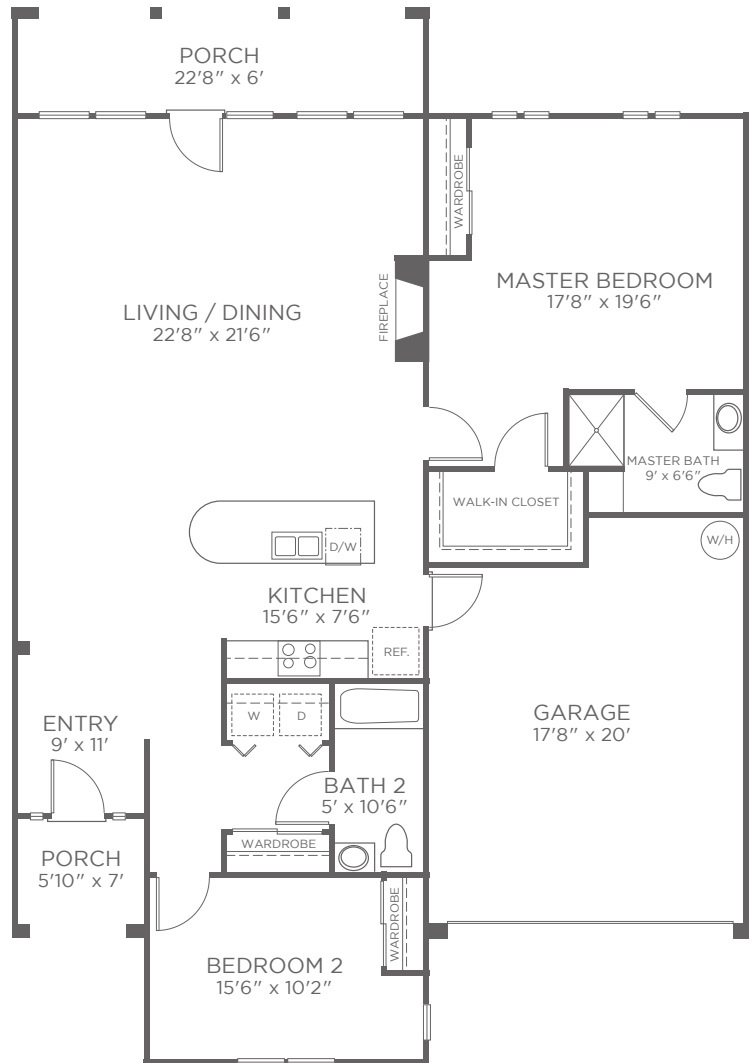
### ASHBY

## 2 Bedroom | 2 bath

Approximately 1,590 sf

### Features

- Spacious floor plan
- Air conditioning with individual climate control
- Fireplace
- Fully equipped kitchen with skylight including: refrigerator, dishwasher, four-burner cook top
- Granite countertops
- Tile flooring in kitchen and bath
- Washer and dryer
- Walk-in closet
- Step-in shower (master bath)
- Shower / tub combination (bath 2)
- Window coverings
- Upgraded lighting package
- Screened-in porch
- Two car garage



8/20

Apartment # \_\_\_\_\_ Current price \$ \_\_\_\_\_ Expires \_\_\_\_\_ Kisco associate initials \_\_\_\_\_

One time community fee \$ \_\_\_\_\_ Second occupancy monthly fee \$ \_\_\_\_\_ Pet monthly fee \$ \_\_\_\_\_ (if applicable)

Kisco Senior Living reserves the right to change pricing, delete or modify floor plans and specifications without notice or obligation. All square footage is approximate. ©



# FLOOR PLAN

## INDEPENDENT LIVING COTTAGES

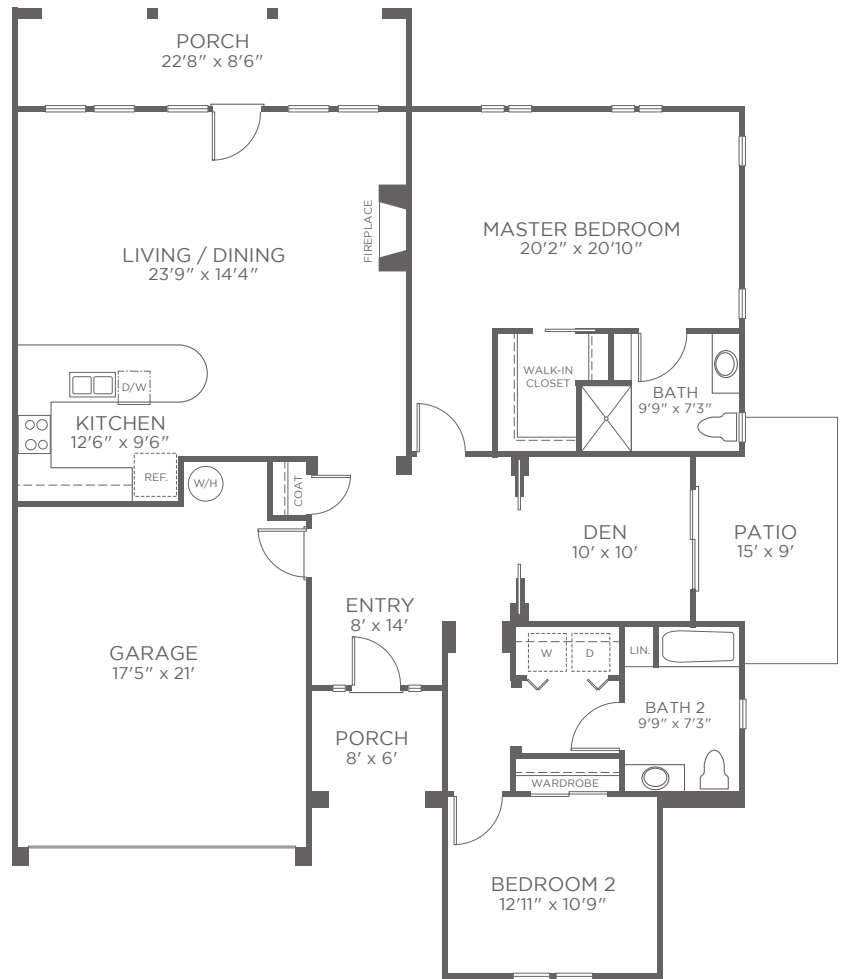
### PRESTON

## 2 Bedroom | 2 bath

Approximately 1,650 sf

### Features

- Spacious floor plan
- Air conditioning with individual climate control
- Fireplace
- Fully equipped kitchen with skylight including: refrigerator, dishwasher, four-burner cook top
- Granite countertops
- Tile flooring in kitchen and bath
- Washer and dryer
- Walk-in closet
- Step-in shower (master bath)
- Shower / tub combination (bath 2)
- Window coverings
- Upgraded lighting package
- Screened-in porch and den with patio
- Two car garage



8/20

Apartment # \_\_\_\_\_ Current price \$ \_\_\_\_\_ Expires \_\_\_\_\_ Kisco associate initials \_\_\_\_\_

One time community fee \$ \_\_\_\_\_ Second occupancy monthly fee \$ \_\_\_\_\_ Pet monthly fee \$ \_\_\_\_\_ (if applicable)

Kisco Senior Living reserves the right to change pricing, delete or modify floor plans and specifications without notice or obligation. All square footage is approximate. ©



# SERVICES

## INDEPENDENT LIVING COTTAGES



- Award-winning dining program
- Restaurant style dining in multiple venues
- Daily continental breakfast plus choice of lunch or dinner
- All day café dining
- Weekly housekeeping and linen service
- Standard cable, utilities, and telephone
- Wi-Fi included
- Emergency response system
- 24-hour security / front desk staff / manager on duty 7 days a week
- Daily check-in service
- Scheduled transportation-shopping and medical appointments
- Signature Art of Living Well® programs
- Library with computer access
- Planned social and educational events as well as day trips
- Balance and mobility programs
- Fitness center with indoor heated pool

### Optional Services

- On-site physician services
- On-site home care
- Outpatient rehabilitation
- On-site salon services



# FLOOR PLAN

## ASSISTED LIVING APARTMENTS

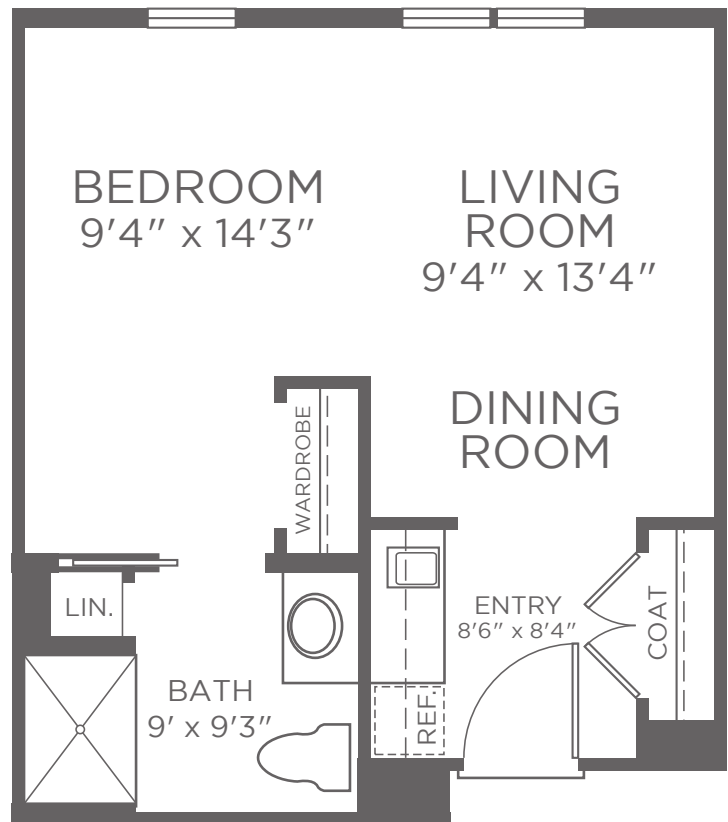
### ALCOVE

### Studio | 1 bath

Approximately 406 sf

#### Features

- Air conditioning with individual climate control
- Refrigerator
- Kitchen sink
- Granite countertops in select apartments
- Spacious closet
- Step-in shower
- Window coverings



8/20

Apartment # \_\_\_\_\_ Current price \$ \_\_\_\_\_ Expires \_\_\_\_\_ Kisco associate initials \_\_\_\_\_

One time community fee \$ \_\_\_\_\_ Second occupancy monthly fee \$ \_\_\_\_\_ Pet monthly fee \$ \_\_\_\_\_ (if applicable)

Kisco Senior Living reserves the right to change pricing, delete or modify floor plans and specifications without notice or obligation. All square footage is approximate. ©



# FLOOR PLAN

## ASSISTED LIVING APARTMENTS

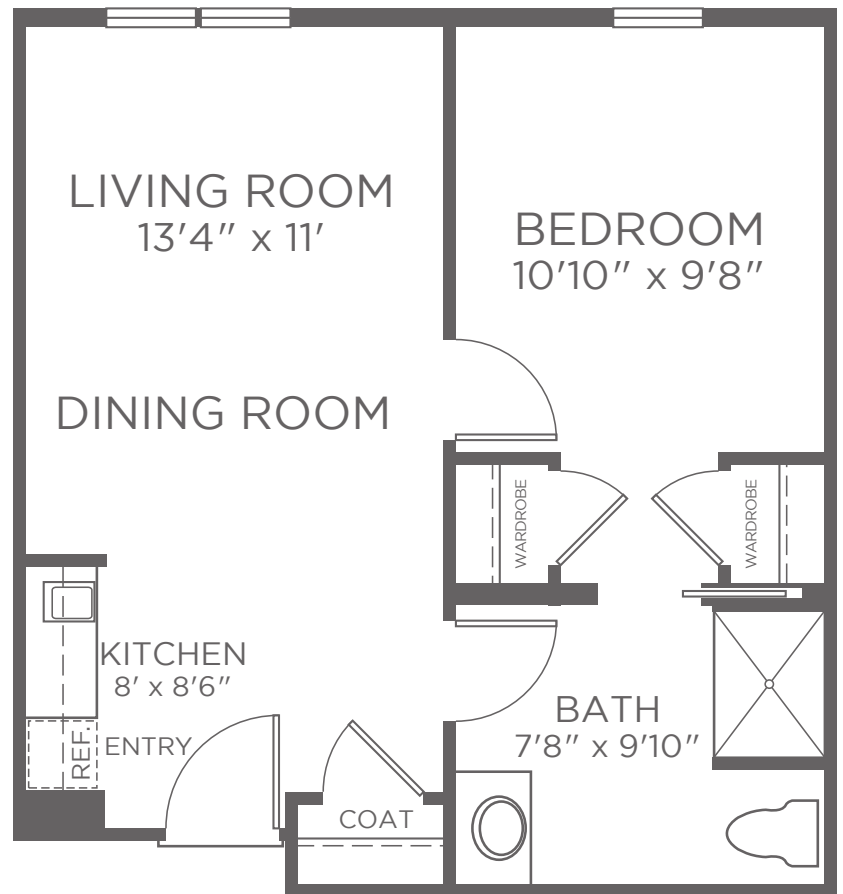
### ONE BEDROOM

### 1 Bedroom | 1 bath

Approximately 517 sf

#### Features

- Air conditioning with individual climate control
- Refrigerator
- Kitchen sink
- Granite countertops in select apartments
- Spacious closet
- Step-in shower
- Window coverings



8/20

Apartment # \_\_\_\_\_ Current price \$ \_\_\_\_\_ Expires \_\_\_\_\_ Kisco associate initials \_\_\_\_\_

One time community fee \$ \_\_\_\_\_ Second occupancy monthly fee \$ \_\_\_\_\_ Pet monthly fee \$ \_\_\_\_\_ (if applicable)

Kisco Senior Living reserves the right to change pricing, delete or modify floor plans and specifications without notice or obligation. All square footage is approximate. ©

300 Kildaire Woods Drive  
Cary, North Carolina 27511  
919.465.0356

LifeatWoodlandTerrace.com  
Facebook.com/WoodlandTerrace

VerraSpring  
at Woodland Terrace 

A KISCO ASSISTED LIVING COMMUNITY



# FLOOR PLAN

## ASSISTED LIVING APARTMENTS

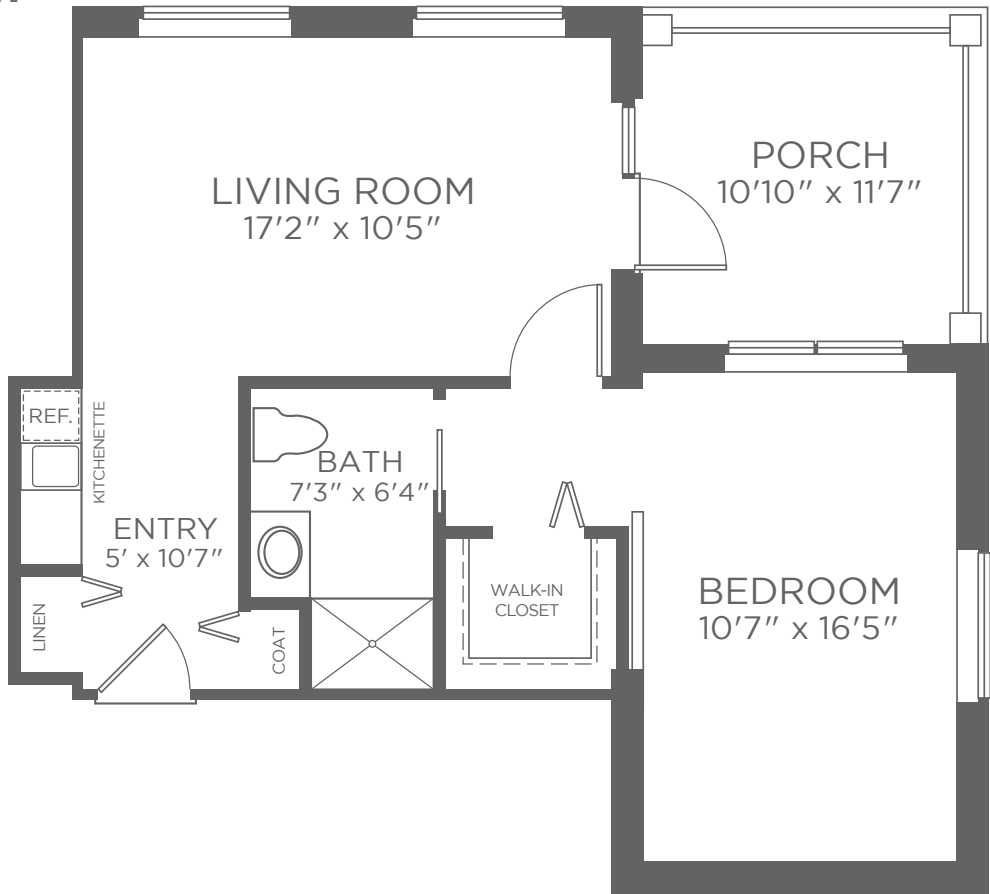
### ONE BEDROOM DELUXE

### 1 Bedroom | 1 bath

Approximately 600 sf

#### Features

- Air conditioning with individual climate control
- Refrigerator
- Kitchen sink
- Granite countertops in select apartments
- Spacious walk-in closet
- Step-in shower
- Window coverings



8/20

Apartment # \_\_\_\_\_ Current price \$ \_\_\_\_\_ Expires \_\_\_\_\_ Kisco associate initials \_\_\_\_\_

One time community fee \$ \_\_\_\_\_ Second occupancy monthly fee \$ \_\_\_\_\_ Pet monthly fee \$ \_\_\_\_\_ (if applicable)

Kisco Senior Living reserves the right to change pricing, delete or modify floor plans and specifications without notice or obligation. All square footage is approximate. ©

300 Kildaire Woods Drive  
Cary, North Carolina 27511  
919.465.0356

LifeatWoodlandTerrace.com  
Facebook.com/WoodlandTerrace



# SERVICES

## LICENSED ASSISTED LIVING



- Personal care services, including assistance with dressing, bathing, and other activities of daily living
- Award-winning restaurant style dining with three meals per day plus snacks
- Laundry services
- Weekly housekeeping and linen service
- Medication management
- Standard cable, utilities, and telephone
- Wi-Fi included
- Scheduled transportation
- Signature Art of Living Well® programs
- Nurse on duty / on call 24 hours
- Emergency response system
- Escort services to/from dining room and activities
- Planned social and educational events as well as day trips
- Indoor heated pool
- Gardening program

### Optional Services

- On-site physician services
- On-site home care
- Outpatient rehabilitation
- On-site salon services





# FLOOR PLAN

## MEMORY CARE SUITES

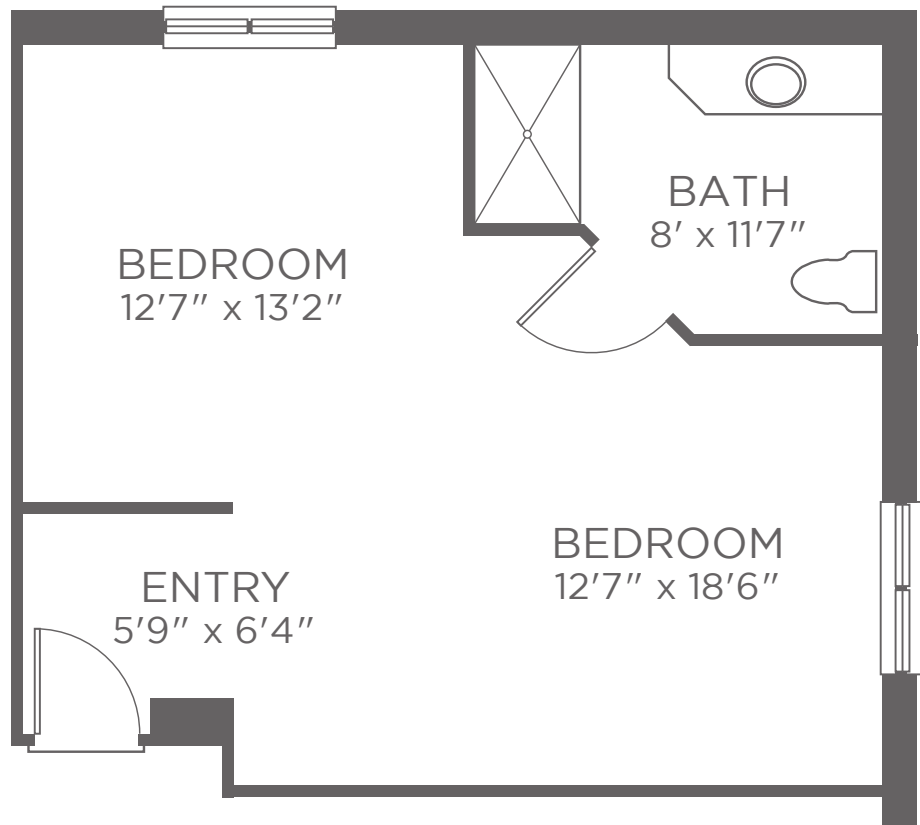
### COMPANION STUDIO

### Studio | 1 bath

Approximately 300 sf

#### Features

- Air conditioning with individual climate control
- Step-in shower
- Window coverings
- Moveable wardrobe



10/20

Apartment # \_\_\_\_\_ Current price \$ \_\_\_\_\_ Expires \_\_\_\_\_ Kisco associate initials \_\_\_\_\_

One time community fee \$ \_\_\_\_\_ Second occupancy monthly fee \$ \_\_\_\_\_ Pet monthly fee \$ \_\_\_\_\_ (if applicable)

Kisco Senior Living reserves the right to change pricing, delete or modify floor plans and specifications without notice or obligation. All square footage is approximate. ©

300 Kildaire Woods Drive  
Cary, North Carolina 27511  
919.465.0356

LifeatWoodlandTerrace.com  
Facebook.com/WoodlandTerrace

The Arboretum  
at Woodland Terrace   
A KISCO MEMORY CARE COMMUNITY



# FLOOR PLAN

## MEMORY CARE SUITES

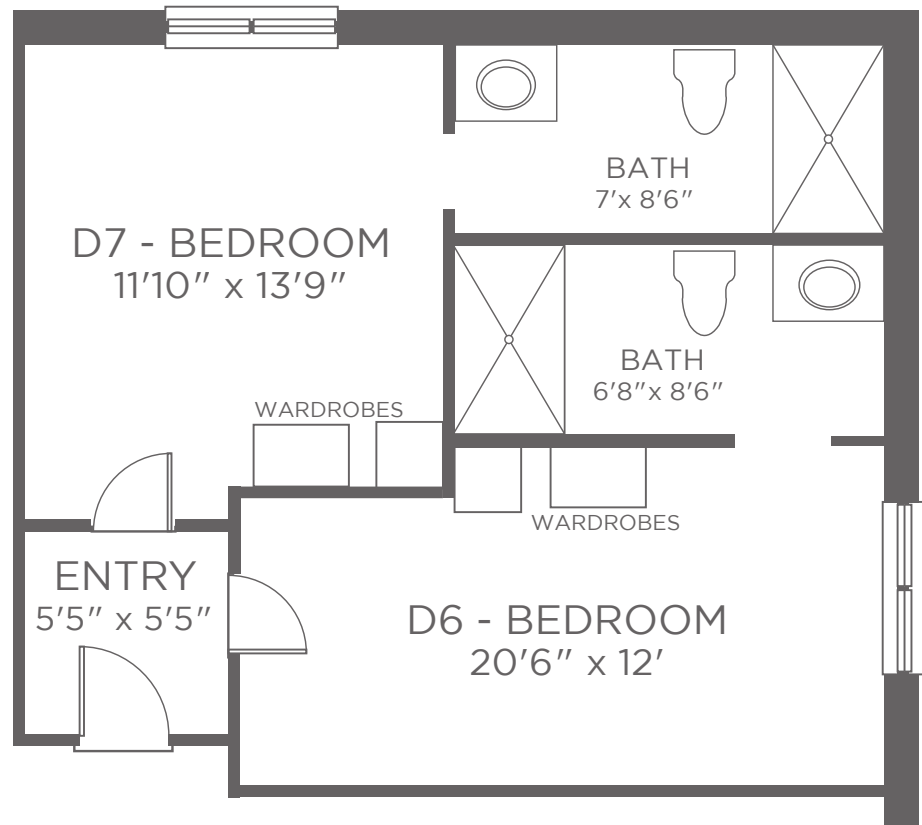
SEMI-PRIVATE  
STUDIO

### Studio | 1 bath

Approximately 300 sf

#### Features

- Air conditioning with individual climate control
- Step-in shower
- Window coverings
- Moveable wardrobes



Apartment # \_\_\_\_\_ Current price \$ \_\_\_\_\_ Expires \_\_\_\_\_ Kisco associate initials \_\_\_\_\_

One time community fee \$ \_\_\_\_\_ Second occupancy monthly fee \$ \_\_\_\_\_ Pet monthly fee \$ \_\_\_\_\_ (if applicable)

Kisco Senior Living reserves the right to change pricing, delete or modify floor plans and specifications without notice or obligation. All square footage is approximate. ©



# FLOOR PLAN

## MEMORY CARE SUITES

### PRIVATE STUDIO

### Studio | 1 bath

Approximately 350 sf

#### Features

- Air conditioning with individual climate control
- Step-in shower
- Window coverings
- Moveable wardrobe



10/20

Apartment # \_\_\_\_\_ Current price \$ \_\_\_\_\_ Expires \_\_\_\_\_ Kisco associate initials \_\_\_\_\_

One time community fee \$ \_\_\_\_\_ Second occupancy monthly fee \$ \_\_\_\_\_ Pet monthly fee \$ \_\_\_\_\_ (if applicable)

Kisco Senior Living reserves the right to change pricing, delete or modify floor plans and specifications without notice or obligation. All square footage is approximate. ©

300 Kildaire Woods Drive  
Cary, North Carolina 27511  
919.465.0356

LifeatWoodlandTerrace.com  
Facebook.com/WoodlandTerrace

The Arboretum  
at Woodland Terrace   
A KISCO MEMORY CARE COMMUNITY



# SERVICES

## LICENSED MEMORY CARE



- Personal care services available, including assistance with dressing, bathing, and other activities of daily living
- Three daily meals plus snacks
- Laundry services
- Weekly housekeeping and linen service
- Medication management
- Standard cable, utilities, and telephone
- Scheduled transportation
- Signature Art of Living Well® programs
- Nurse on duty / on call 24 hours
- Escort services to/from dining room and activities
- Planned social and educational events as well as day trips
- Gardening program
- Music & Memory program
- Aquatics Programs

### Optional Services

- On-site physician services
- On-site home care
- Outpatient rehabilitation
- On-site salon services

