

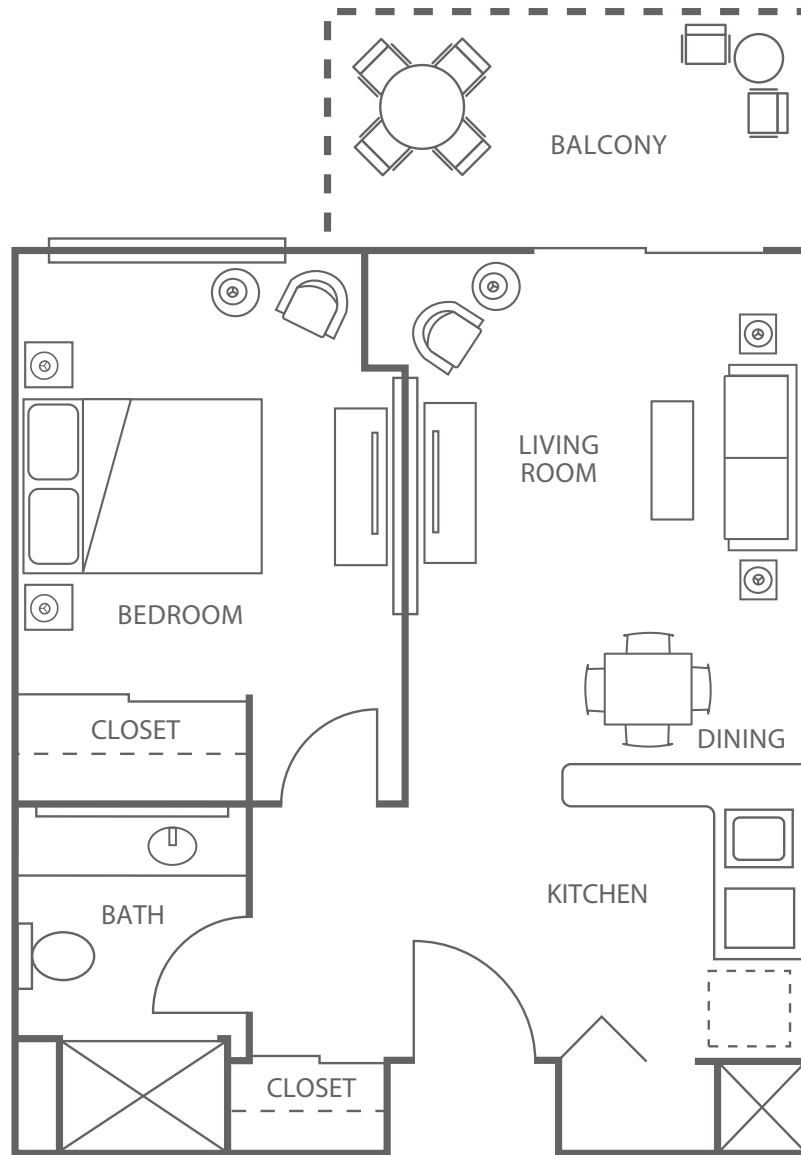


# FLOOR PLAN

INDEPENDENT  
& ASSISTED LIVING

# PLAN A

1 BEDROOM | 1 BATH  
APPROXIMATELY 450 SF



APARTMENT # \_\_\_\_\_ CURRENT PRICE \$ \_\_\_\_\_ EXPIRES \_\_\_\_\_ KISCO ASSOCIATE INITIALS \_\_\_\_\_

ONE TIME COMMUNITY FEE \$ \_\_\_\_\_ SECOND OCCUPANCY MONTHLY FEE \$ \_\_\_\_\_ PET MONTHLY FEE \$ \_\_\_\_\_

Kisco Senior Living reserves the right to change pricing, delete or modify floor plans and specifications without notice or obligation. All square footage is approximate.

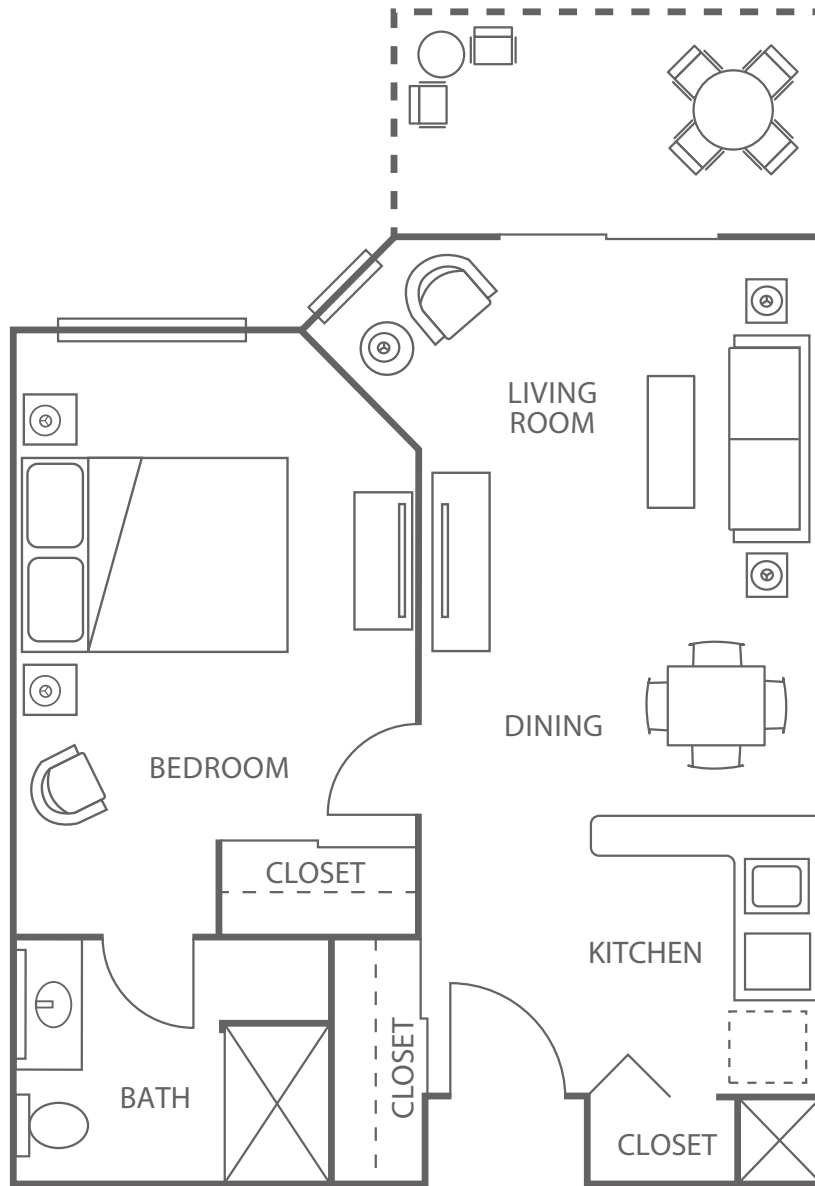


# FLOOR PLAN

INDEPENDENT  
& ASSISTED LIVING

# PLAN B

1 BEDROOM DELUXE | 1 BATH  
APPROXIMATELY 620 SF



APARTMENT # \_\_\_\_\_ CURRENT PRICE \$ \_\_\_\_\_ EXPIRES \_\_\_\_\_ KISCO ASSOCIATE INITIALS \_\_\_\_\_

ONE TIME COMMUNITY FEE \$ \_\_\_\_\_ SECOND OCCUPANCY MONTHLY FEE \$ \_\_\_\_\_ PET MONTHLY FEE \$ \_\_\_\_\_

Kisco Senior Living reserves the right to change pricing, delete or modify floor plans and specifications without notice or obligation. All square footage is approximate.

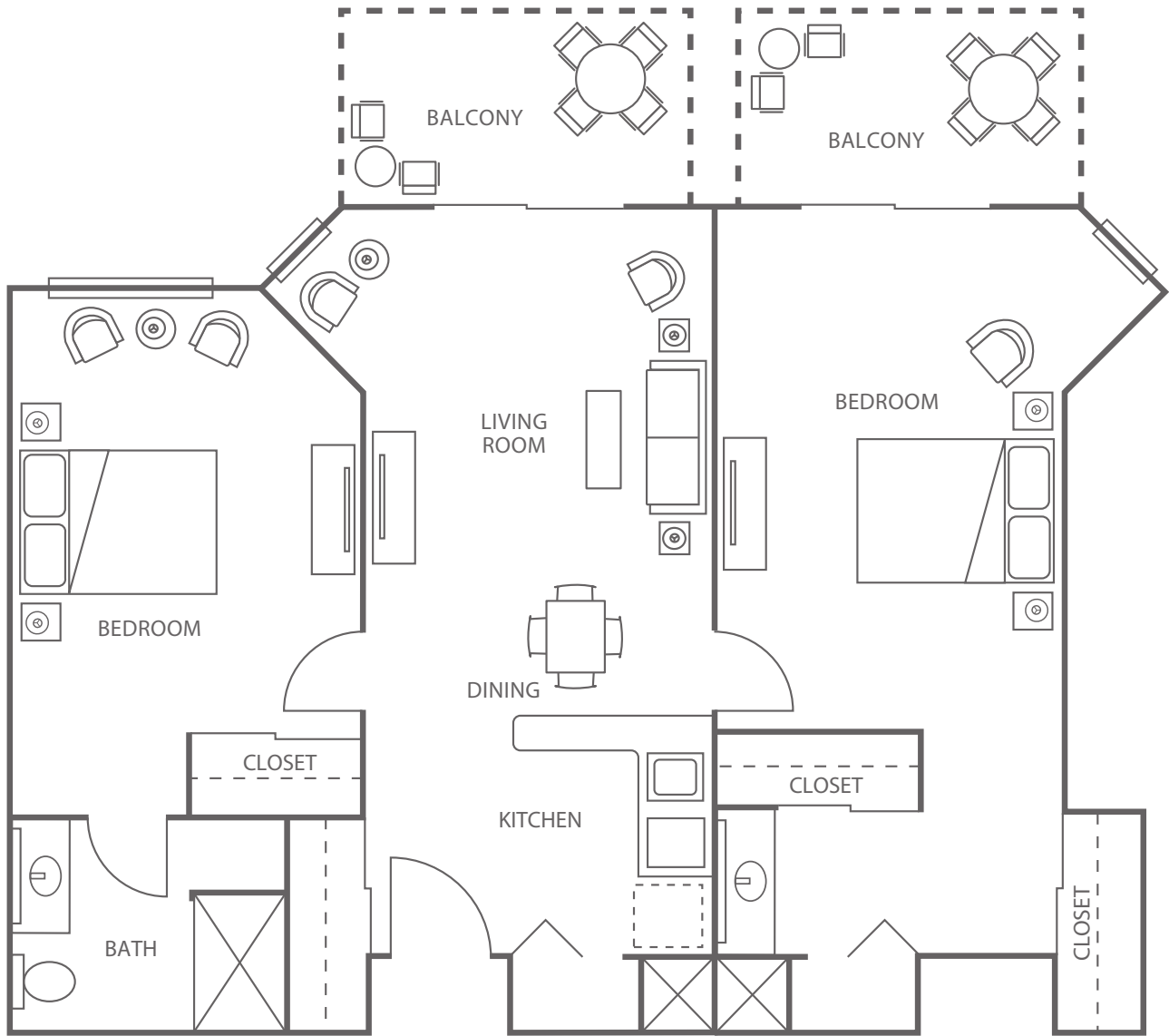


# FLOOR PLAN

INDEPENDENT  
& ASSISTED LIVING

# PLAN C

2 BEDROOM | 1 BATH  
APPROXIMATELY 760 SF



APARTMENT # \_\_\_\_\_ CURRENT PRICE \$ \_\_\_\_\_ EXPIRES \_\_\_\_\_ KISCO ASSOCIATE INITIALS \_\_\_\_\_

ONE TIME COMMUNITY FEE \$ \_\_\_\_\_ SECOND OCCUPANCY MONTHLY FEE \$ \_\_\_\_\_ PET MONTHLY FEE \$ \_\_\_\_\_

Kisco Senior Living reserves the right to change pricing, delete or modify floor plans and specifications without notice or obligation. All square footage is approximate.

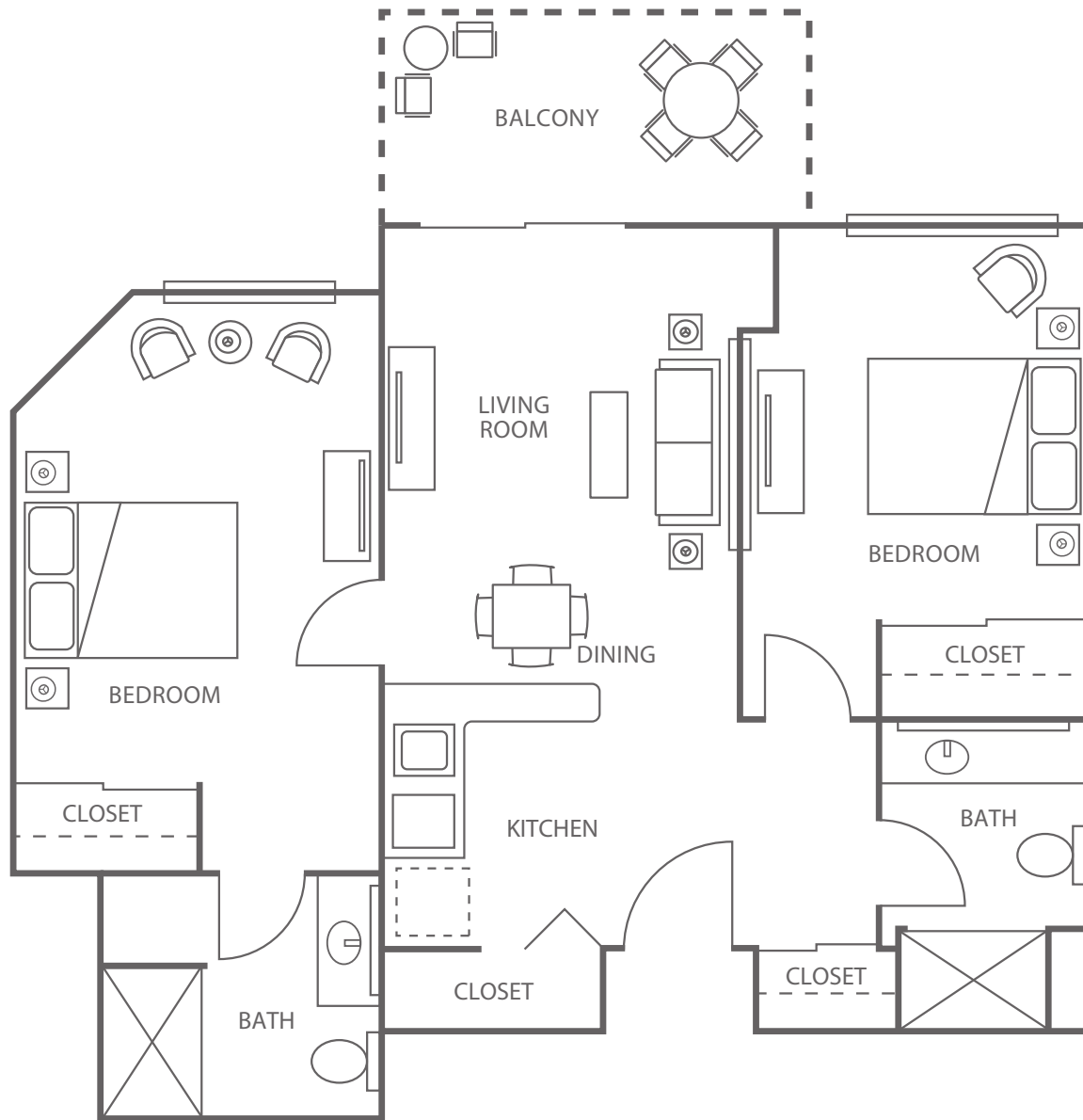


# FLOOR PLAN

INDEPENDENT  
& ASSISTED LIVING

# PLAN D

2 BEDROOM | 2 BATH  
APPROXIMATELY 820 SF



APARTMENT # \_\_\_\_\_ CURRENT PRICE \$ \_\_\_\_\_ EXPIRES \_\_\_\_\_ KISCO ASSOCIATE INITIALS \_\_\_\_\_

ONE TIME COMMUNITY FEE \$ \_\_\_\_\_ SECOND OCCUPANCY MONTHLY FEE \$ \_\_\_\_\_ PET MONTHLY FEE \$ \_\_\_\_\_

Kisco Senior Living reserves the right to change pricing, delete or modify floor plans and specifications without notice or obligation. All square footage is approximate.

## FOR YOUR HOME

- Luxury residences nestled in the midst of Walnut Creek, one of the Bay Area's most desirable communities
- Interior and exterior home maintenance
- Weekly housekeeping personal and linen service
- All utilities (except phone) included: electricity, trash removal, water, and Wi-Fi
- Digital cable television, community channel, premium channels and DVR
- High speed internet with private networks available

## FOR YOUR CONVENIENCE

- Concierge service
- Complimentary scheduled transportation services
- Climate controlled storage spaces available

## FOR YOUR ENJOYMENT

- Flexible, made-to-order dining in upscale, casual, private.
- Gourmet cuisine with a wide variety of delicious, thoughtful and healthy menus, including a daily special, prepared by The Kensington's accomplished culinary team
- Library and computer center
- Game room
- Media room and lecture hall
- Onsite salon
- Putting green

## FOR YOUR SECURITY

- Emergency response system, emergency generator and daily check-ins
- 24 hour front desk security and on-call maintenance staff

## FOR YOUR WELL-BEING

- Fitness and weight room
- Group exercise studio
- Signature The Art of Living Well® programs
- A full calendar of social, cultural, and educational programs
- Stand Strong - balance and mobility program provided by The Kensington's Wellness team
- State-of-the-art fitness equipment designed specifically for seniors

## RESIDENCE FEATURES

- Air conditioning and heating with individual climate control
- Walk-in shower
- Spacious bathrooms with granite countertops
- Spacious kitchens with granite countertops
- Built-in microwave
- Window coverings
- Large private balcony on every apartment



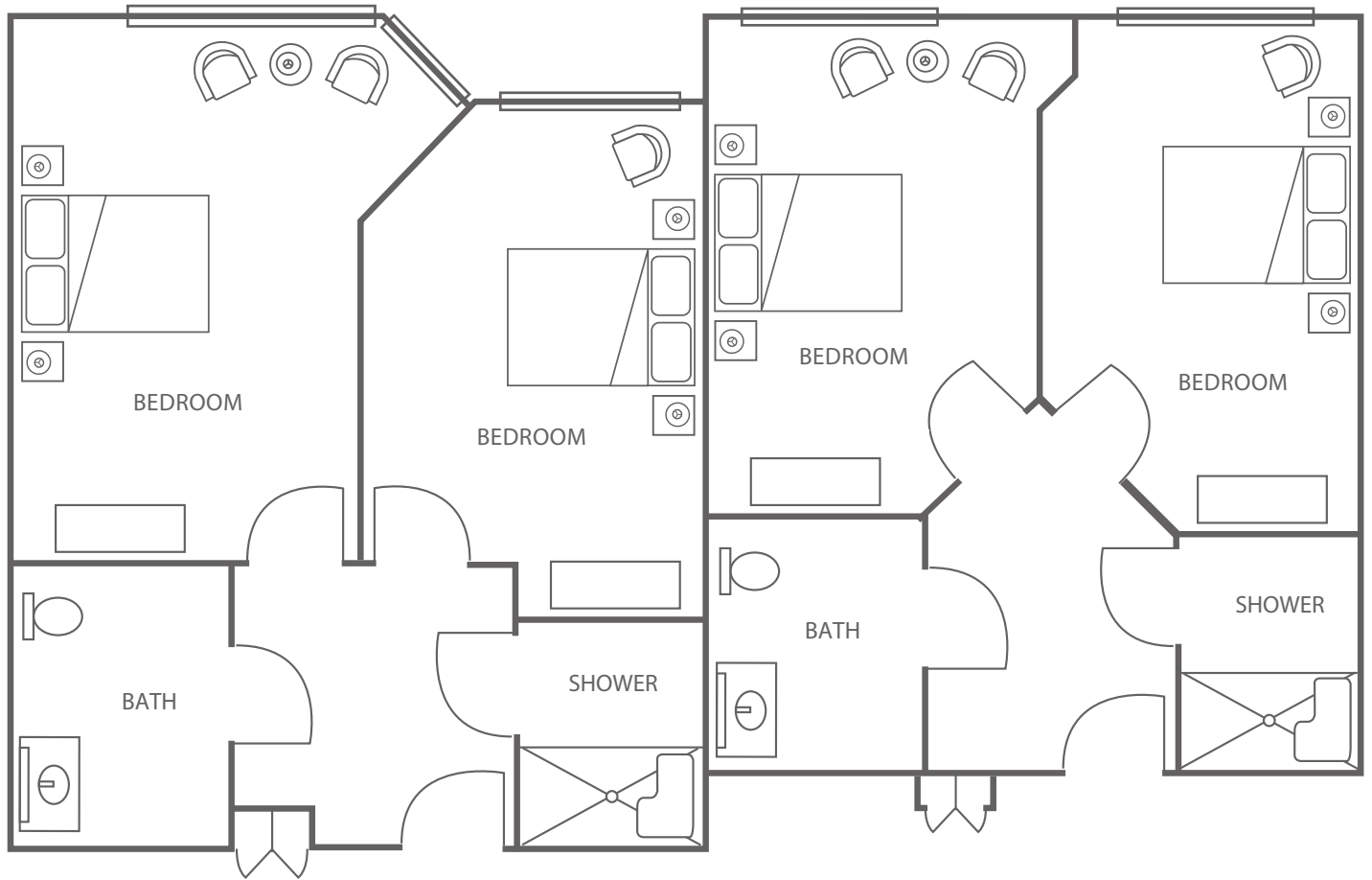
# FLOOR PLAN

## MEMORY CARE SUITE

# PRIVATE ALCOVE

2 BEDROOM | 2 BATH

APPROXIMATELY 450 - 620 SF



SUITE # \_\_\_\_\_ CURRENT PRICE \$ \_\_\_\_\_ ONE TIME COMMUNITY FEE \$ \_\_\_\_\_

EXPIRES \_\_\_\_\_ KISCO ASSOCIATE SIGNATURE \_\_\_\_\_

Kisco Senior Living reserves the right to change pricing, delete or modify floor plans and specifications without notice or obligation. All square footage is approximate.

## FOR YOUR HOME

- Luxury residences nestled in the midst of Walnut Creek, one of the Bay Area's most desirable communities
- Interior and exterior home maintenance
- Weekly housekeeping personal and linen service
- All utilities (except phone) included: electricity, trash removal, water, and Wi-Fi
- Digital cable television, community channel, premium channels and DVR
- High speed internet with private networks available

## FOR YOUR CONVENIENCE

- Concierge service
- Complimentary scheduled transportation services
- Climate controlled storage spaces available

## FOR YOUR ENJOYMENT

- Flexible, made-to-order dining in upscale, casual, private.
- Gourmet cuisine with a wide variety of delicious, thoughtful and healthy menus, including a daily special, prepared by The Kensington's accomplished culinary team
- Library and computer center
- Game room
- Media room and lecture hall
- Onsite salon
- Putting green

## FOR YOUR SECURITY

- Emergency response system, emergency generator and daily check-ins
- 24 hour front desk security and on-call maintenance staff

## FOR YOUR WELL-BEING

- Fitness and weight room
- Group exercise studio
- Signature The Art of Living Well® programs
- A full calendar of social, cultural, and educational programs
- Stand Strong - balance and mobility program provided by The Kensington's Wellness team
- State-of-the-art fitness equipment designed specifically for seniors

## RESIDENCE FEATURES

- Air conditioning and heating with individual climate control
- Walk-in shower
- Spacious bathrooms with granite countertops
- Spacious kitchens with granite countertops
- Built-in microwave
- Window coverings
- Large private balcony on every apartment