

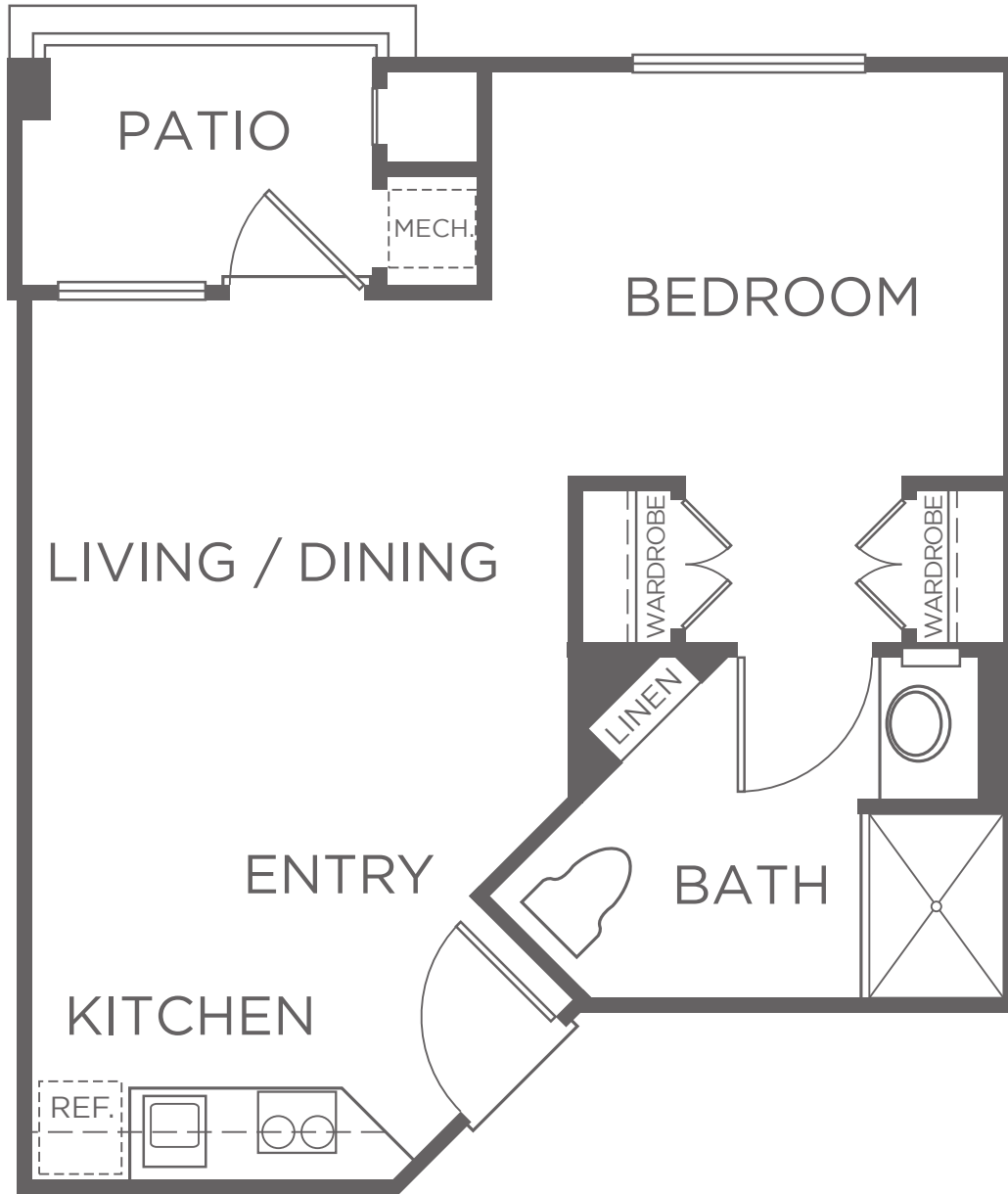


**INDEPENDENT LIVING
ASSISTED LIVING**

ALISO

STUDIO | 1 BATH

APPROXIMATELY 470 SF



APARTMENT # _____ CURRENT PRICE \$ _____ EXPIRES _____ KISCO ASSOCIATE INITIALS _____

ONE TIME COMMUNITY FEE \$ _____ SECOND OCCUPANCY MONTHLY FEE \$ _____ PET MONTHLY FEE \$ _____

Kisco Senior Living reserves the right to change pricing, delete or modify floor plans and specifications without notice or obligation. All square footage is approximate.



21952 Buena Suerte · Rancho Santa Margarita, CA 92688 | LifeatParkTerrace.com | License #306001157



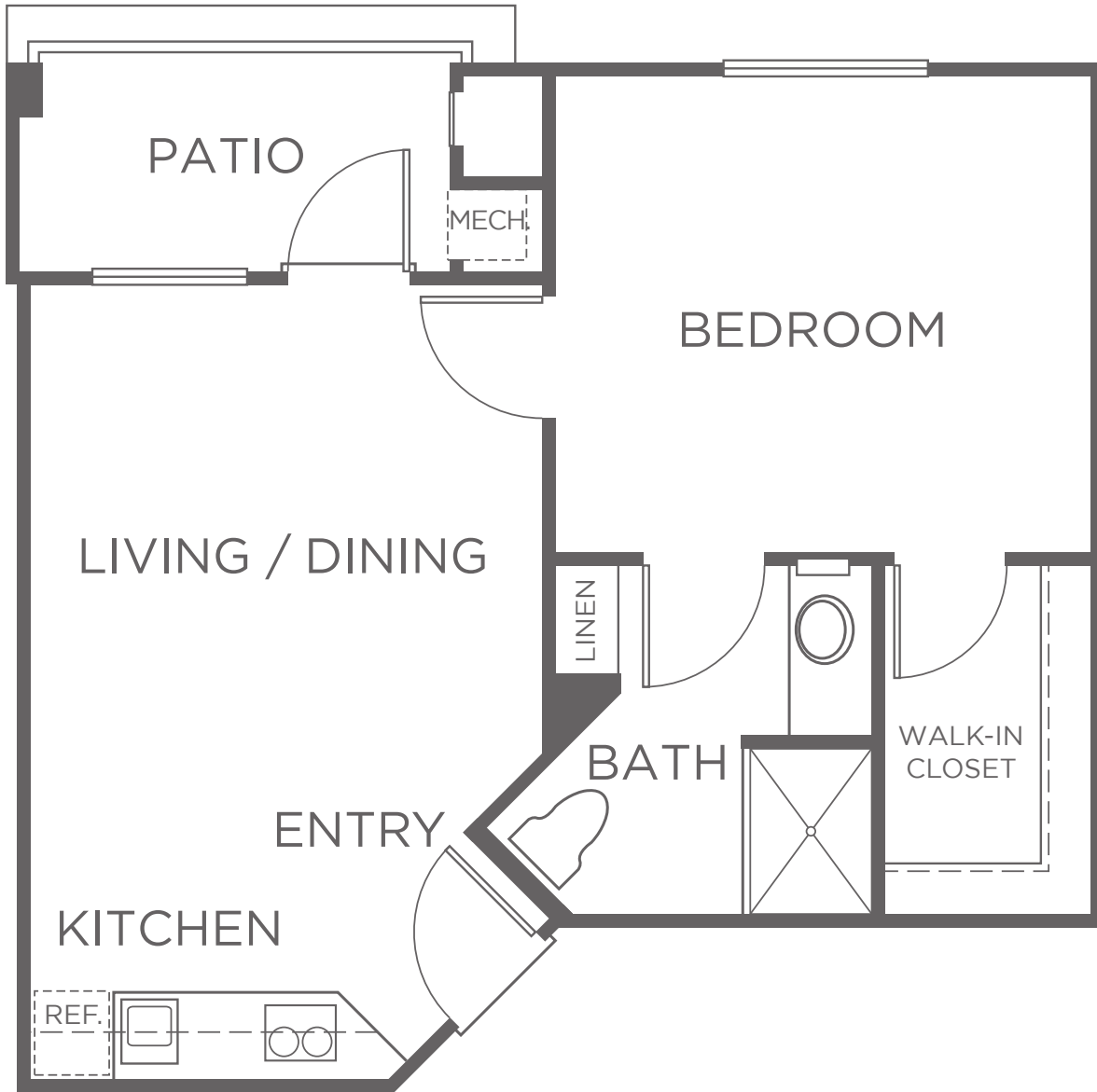


INDEPENDENT LIVING
ASSISTED LIVING

ROBLES

1 BEDROOM | 1 BATH

APPROXIMATELY 560 SF



APARTMENT # _____ CURRENT PRICE \$ _____ EXPIRES _____ KISCO ASSOCIATE INITIALS _____

ONE TIME COMMUNITY FEE \$ _____ SECOND OCCUPANCY MONTHLY FEE \$ _____ PET MONTHLY FEE \$ _____

Kisco Senior Living reserves the right to change pricing, delete or modify floor plans and specifications without notice or obligation. All square footage is approximate.



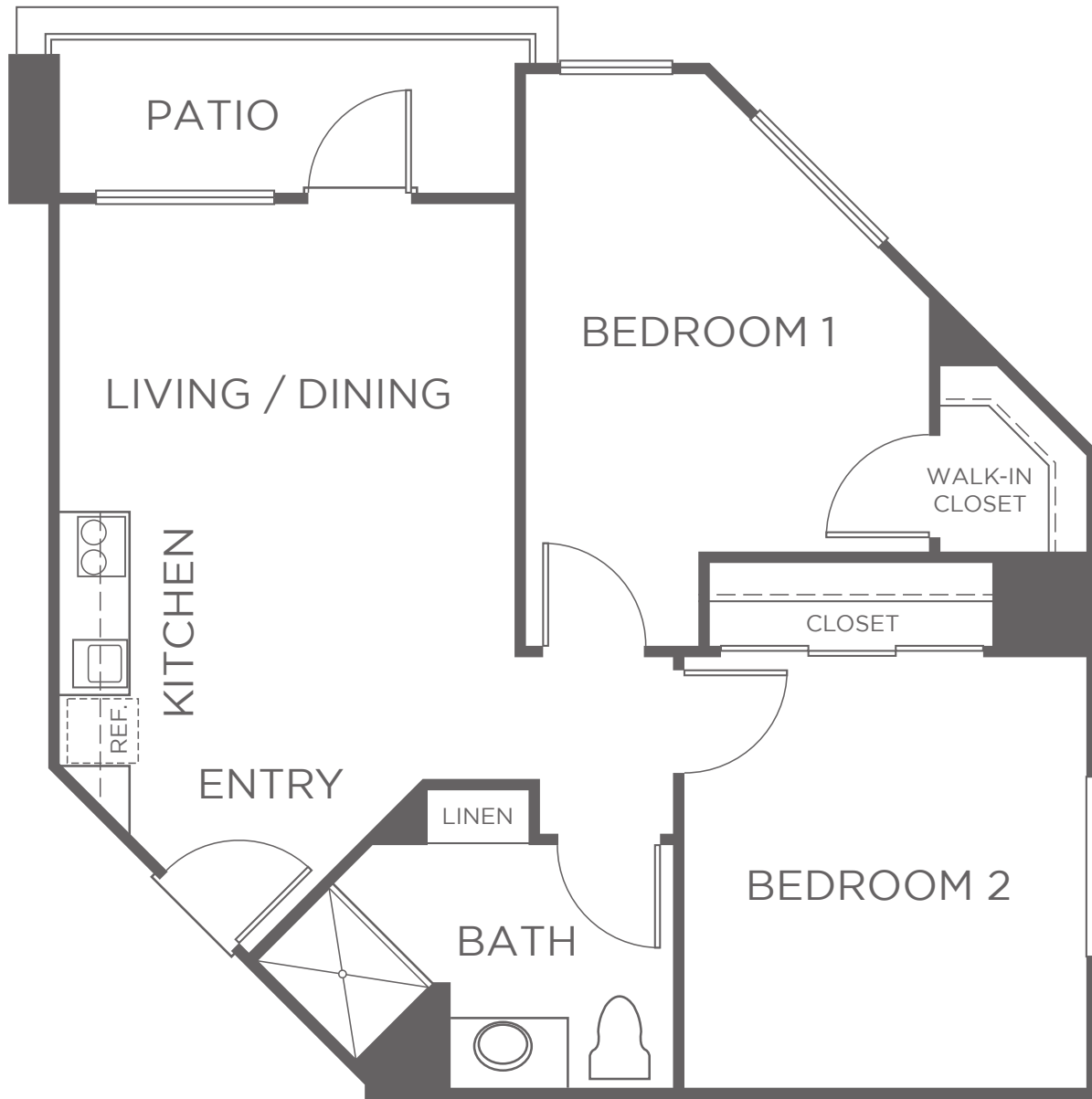
21952 Buena Suerte · Rancho Santa Margarita, CA 92688 | LifeatParkTerrace.com | License #306001157





**INDEPENDENT LIVING
ASSISTED LIVING**

CEDRO
2 BEDROOM | 1 BATH
APPROXIMATELY 770 SF



APARTMENT # _____ CURRENT PRICE \$ _____ EXPIRES _____ KISCO ASSOCIATE INITIALS _____

ONE TIME COMMUNITY FEE \$ _____ SECOND OCCUPANCY MONTHLY FEE \$ _____ PET MONTHLY FEE \$ _____

Kisco Senior Living reserves the right to change pricing, delete or modify floor plans and specifications without notice or obligation. All square footage is approximate.



21952 Buena Suerte · Rancho Santa Margarita, CA 92688 | LifeatParkTerrace.com | License #306001157



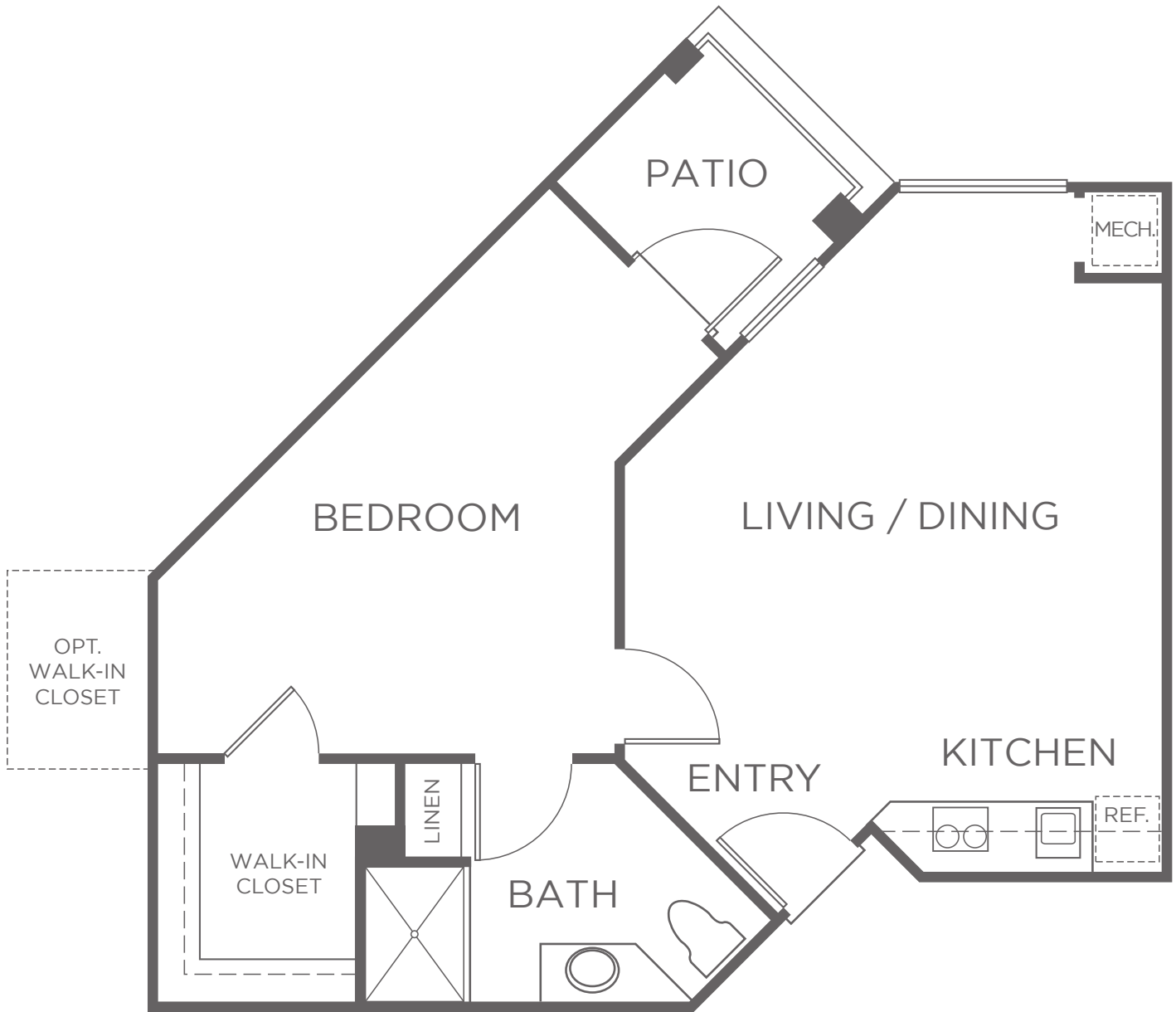


INDEPENDENT LIVING
ASSISTED LIVING

ENCINO

1 BEDROOM | 1 BATH

APPROXIMATELY 630 SF



APARTMENT # _____ CURRENT PRICE \$ _____ EXPIRES _____ KISCO ASSOCIATE INITIALS _____

ONE TIME COMMUNITY FEE \$ _____ SECOND OCCUPANCY MONTHLY FEE \$ _____ PET MONTHLY FEE \$ _____

Kisco Senior Living reserves the right to change pricing, delete or modify floor plans and specifications without notice or obligation. All square footage is approximate.



21952 Buena Suerte · Rancho Santa Margarita, CA 92688 | LifeatParkTerrace.com | License #306001157





**INDEPENDENT LIVING
ASSISTED LIVING**

ACACIA

2 BEDROOM | 2 BATH

APPROXIMATELY 915 SF



APARTMENT # _____ CURRENT PRICE \$ _____ EXPIRES _____ KISCO ASSOCIATE INITIALS _____

ONE TIME COMMUNITY FEE \$ _____ SECOND OCCUPANCY MONTHLY FEE \$ _____ PET MONTHLY FEE \$ _____

Kisco Senior Living reserves the right to change pricing, delete or modify floor plans and specifications without notice or obligation. All square footage is approximate.



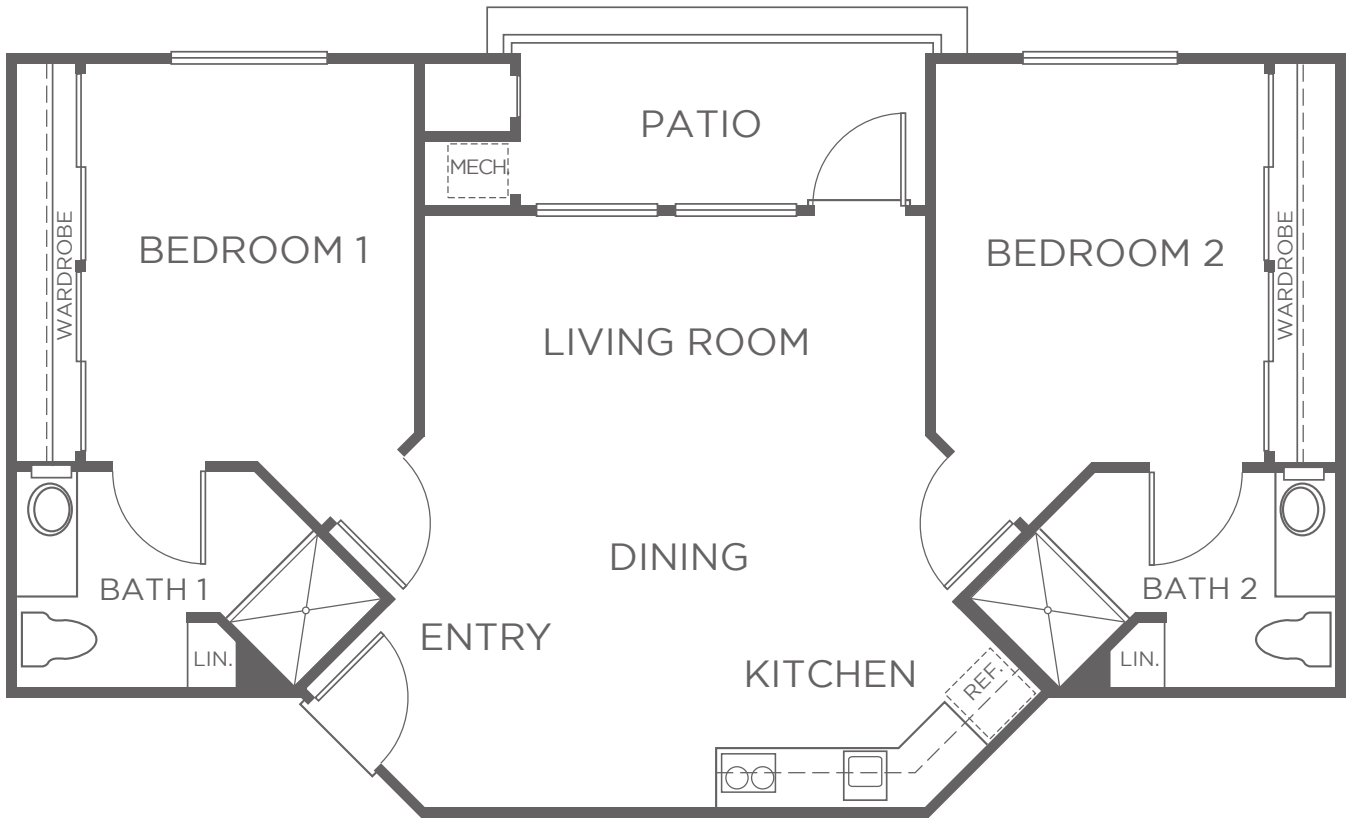
21952 Buena Suerte · Rancho Santa Margarita, CA 92688 | LifeatParkTerrace.com | License #306001157





**INDEPENDENT LIVING
ASSISTED LIVING**

SABINA
2 BEDROOM | 2 BATH
APPROXIMATELY 950 SF



APARTMENT # _____ CURRENT PRICE \$ _____ EXPIRES _____ KISCO ASSOCIATE INITIALS _____

ONE TIME COMMUNITY FEE \$ _____ SECOND OCCUPANCY MONTHLY FEE \$ _____ PET MONTHLY FEE \$ _____

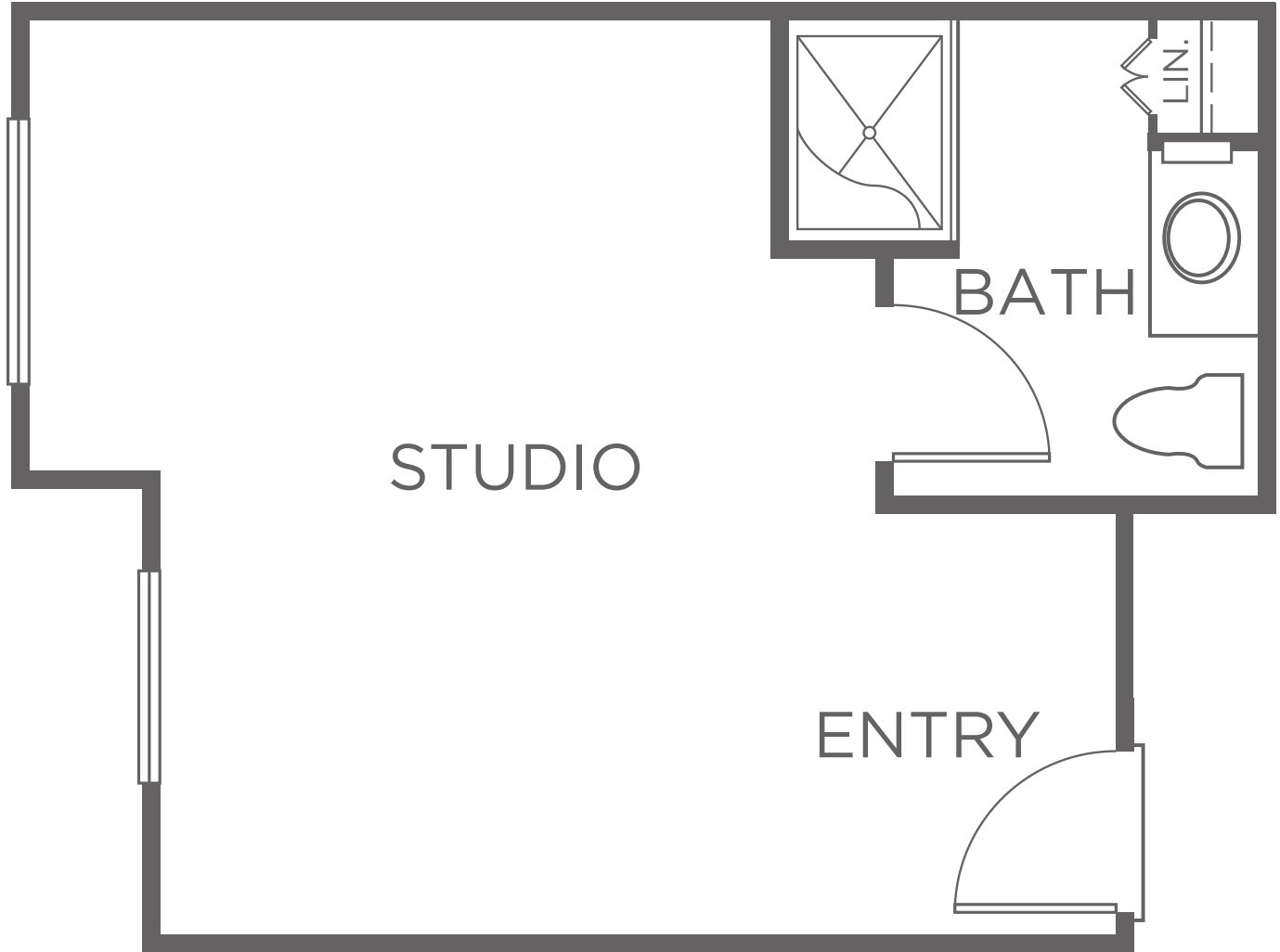
Kisco Senior Living reserves the right to change pricing, delete or modify floor plans and specifications without notice or obligation. All square footage is approximate.



**SUMMIT CLUB
MOUNTAIN VIEW COTTAGES**

PINOS

STUDIO | 1 BATH
APPROXIMATELY 485 SF



APARTMENT # _____ CURRENT PRICE \$ _____ EXPIRES _____ KISCO ASSOCIATE INITIALS _____

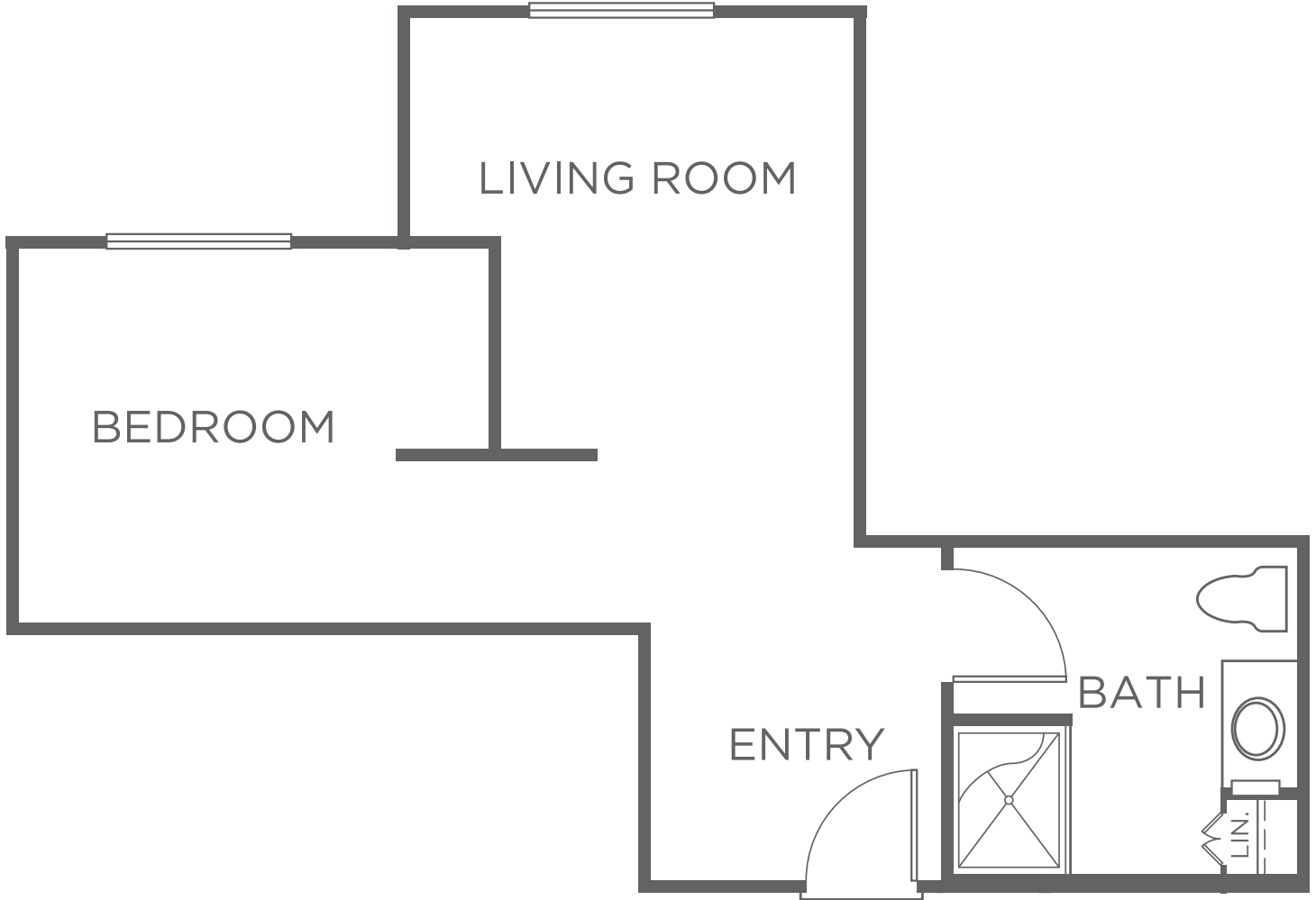
ONE TIME COMMUNITY FEE \$ _____ SECOND OCCUPANCY MONTHLY FEE \$ _____ PET MONTHLY FEE \$ _____



**SUMMIT CLUB
MOUNTAIN VIEW COTTAGES**

PALMERA

1 BEDROOM | 1 BATH
APPROXIMATELY 588 SF



APARTMENT # _____ CURRENT PRICE \$ _____ EXPIRES _____ KISCO ASSOCIATE INITIALS _____

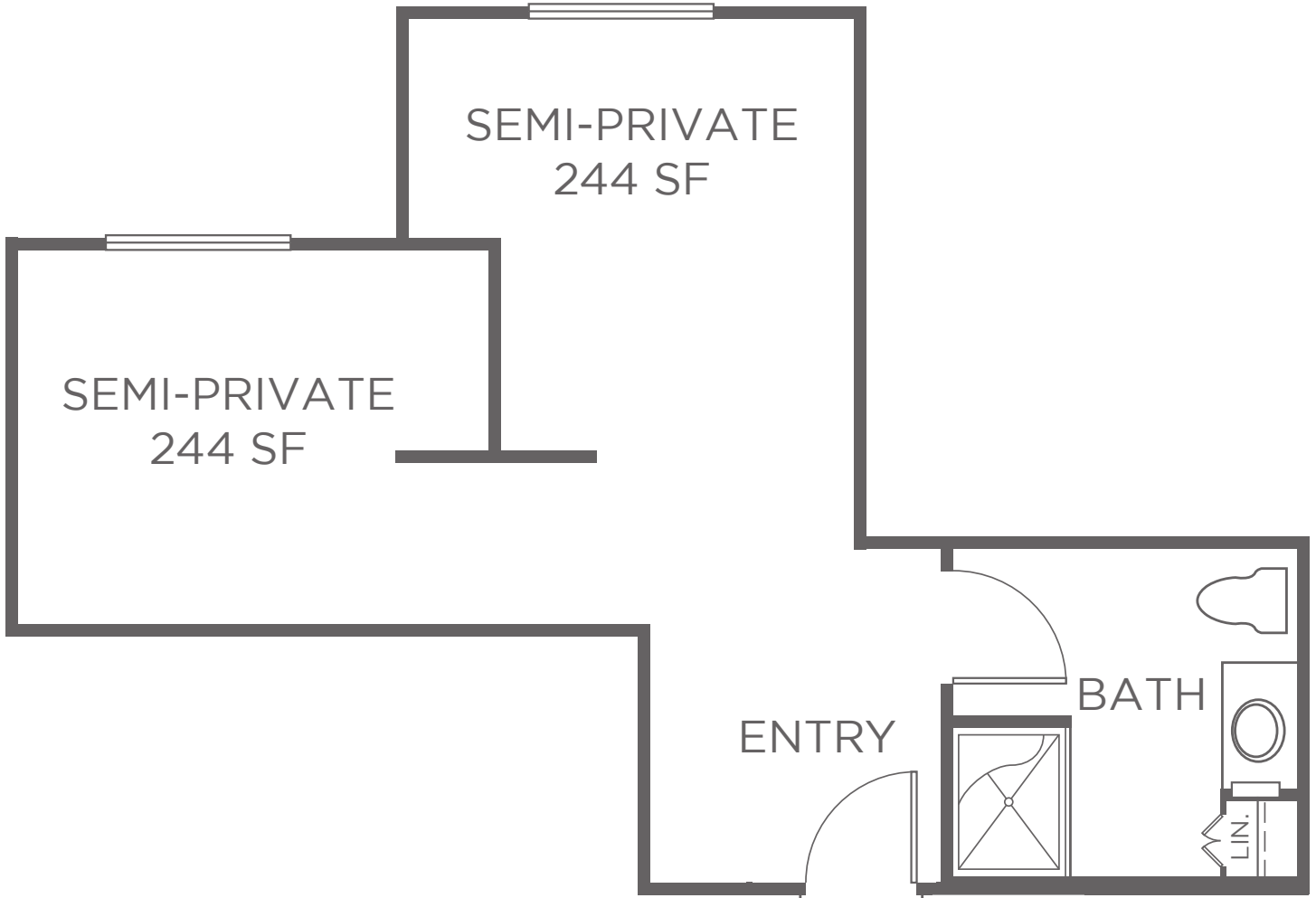
ONE TIME COMMUNITY FEE \$ _____ SECOND OCCUPANCY MONTHLY FEE \$ _____ PET MONTHLY FEE \$ _____



CONNECTIONS | MEMORY CARE
MOUNTAIN VIEW COTTAGES

NOGAL & CARRIZO

SHARED STUDIO
 APPROXIMATELY 244 SF



SUITE # _____ CURRENT PRICE \$ _____ EXPIRES _____ KISCO ASSOCIATE INITIALS _____

ONE TIME COMMUNITY FEE \$ _____ SECOND OCCUPANCY MONTHLY FEE \$ _____ PET MONTHLY FEE \$ _____

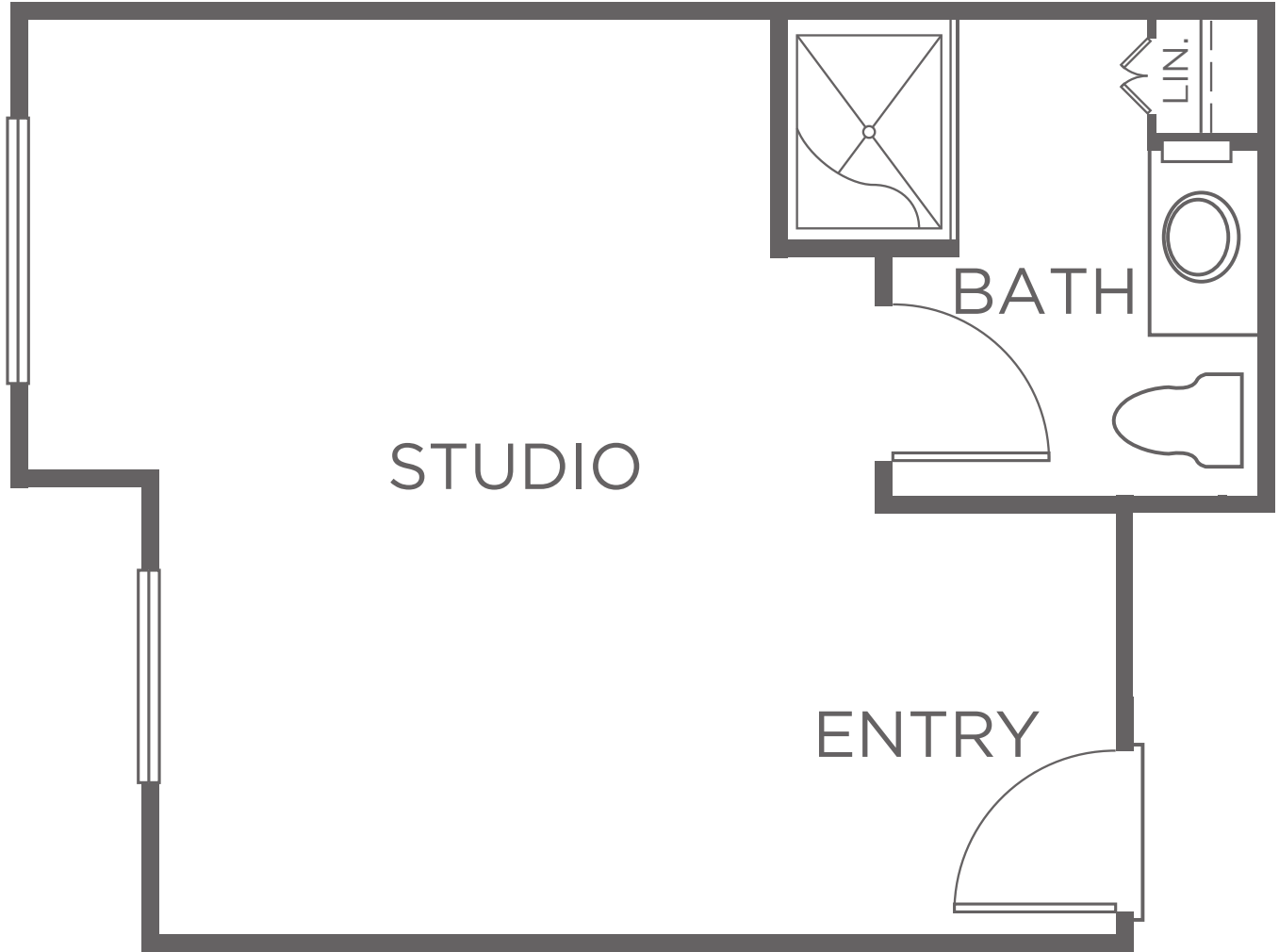


CONNECTIONS | MEMORY CARE
MOUNTAIN VIEW COTTAGES

PINOS

STUDIO | 1 BATH

APPROXIMATELY 485 SF



SUITE # _____ CURRENT PRICE \$ _____ EXPIRES _____ KISCO ASSOCIATE INITIALS _____

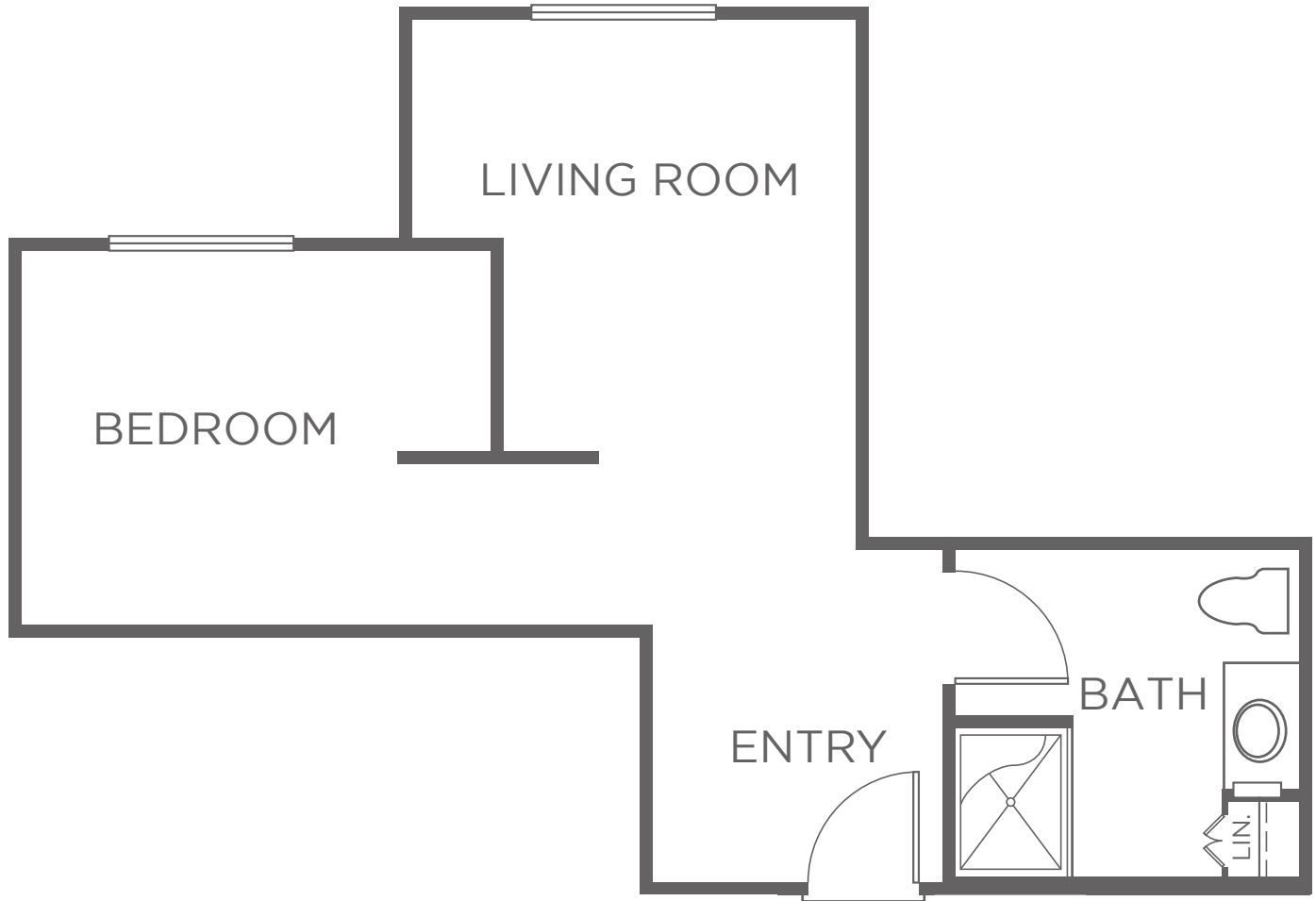
ONE TIME COMMUNITY FEE \$ _____ SECOND OCCUPANCY MONTHLY FEE \$ _____ PET MONTHLY FEE \$ _____



CONNECTIONS | MEMORY CARE
MOUNTAIN VIEW COTTAGES

PALMERA

1 BEDROOM | 1 BATH
 APPROXIMATELY 588 SF



SUITE # _____ CURRENT PRICE \$ _____ EXPIRES _____ KISCO ASSOCIATE INITIALS _____

ONE TIME COMMUNITY FEE \$ _____ SECOND OCCUPANCY MONTHLY FEE \$ _____ PET MONTHLY FEE \$ _____

