

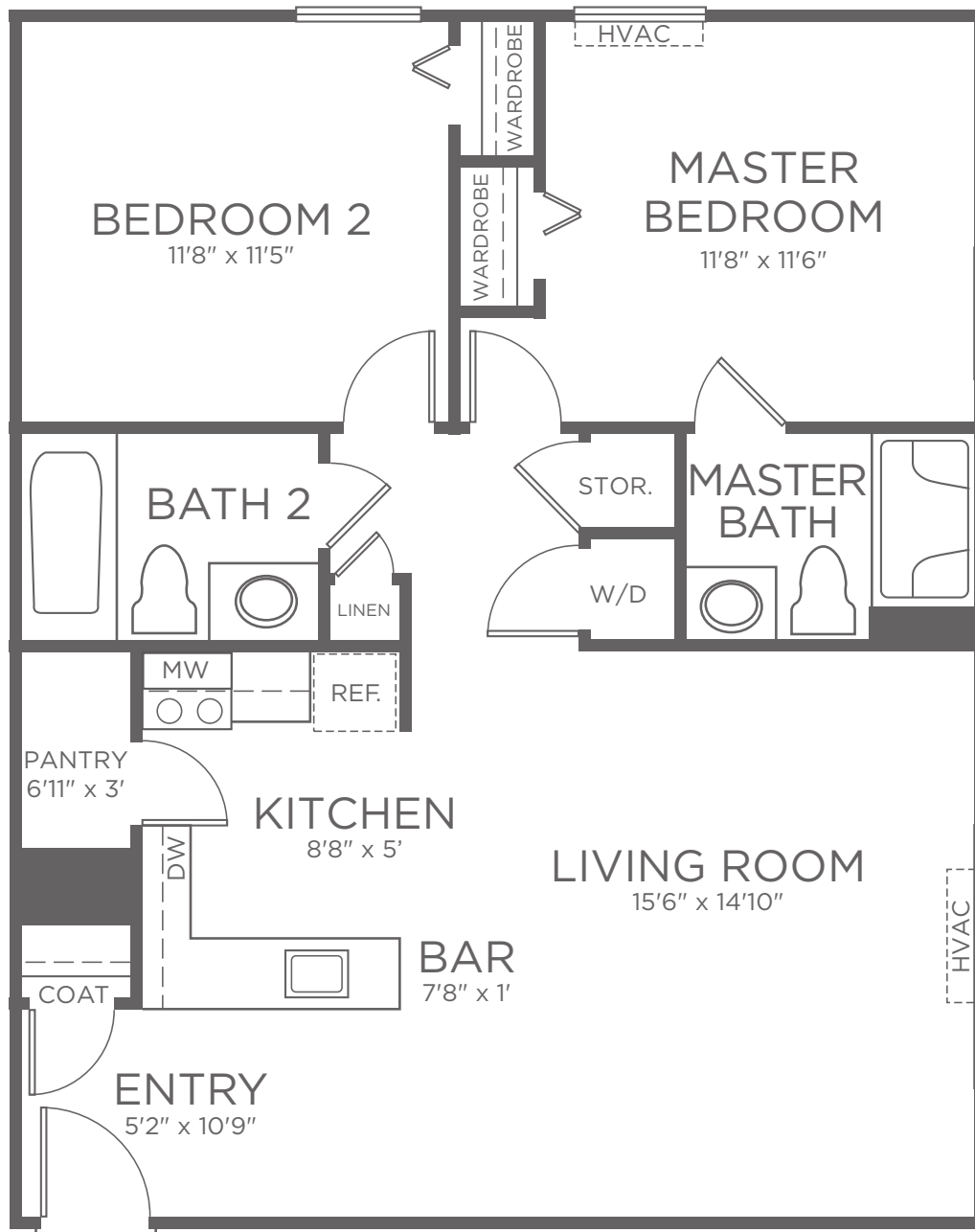


FLOOR PLAN

INDEPENDENT &
ASSISTED LIVING SERVICES

TWO BEDROOM

2 BEDROOM | 2 BATH
APPROXIMATELY 905 SF



07 | 2023

CURRENT RESIDENCE PRICE \$ _____ CARE ESTIMATE \$ _____ KISCO ASSOCIATE INITIALS _____

ONE TIME COMMUNITY FEE \$ _____ SECOND OCCUPANCY MONTHLY FEE \$ _____ PET MONTHLY FEE \$ _____

Kisco Senior Living reserves the right to change pricing, delete or modify floor plans and specifications without notice or obligation. All square footage is approximate.