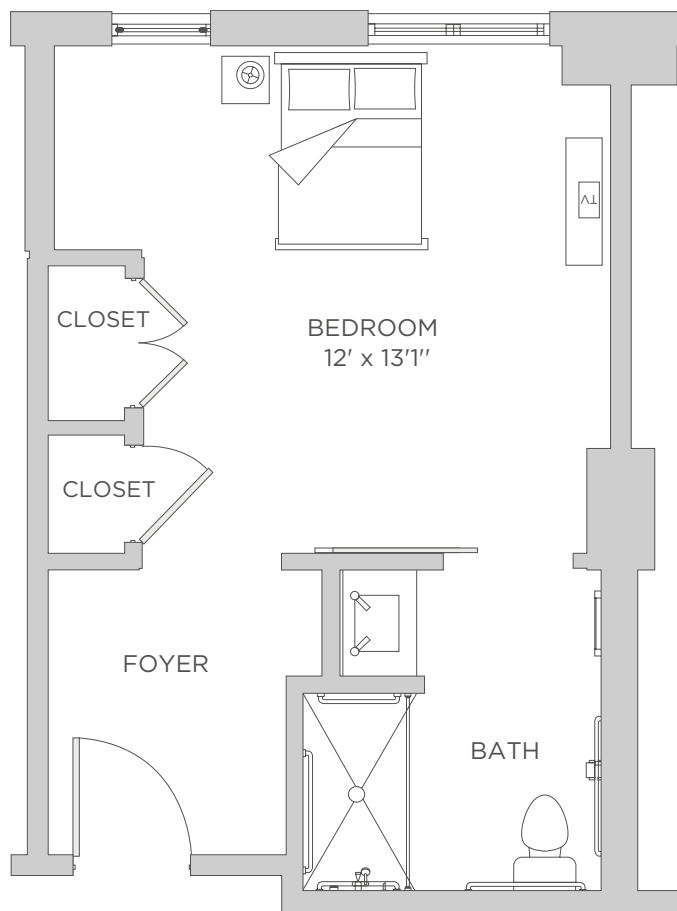




MAPLE

MEMORY CARE

STUDIO | 1 BATH
APPROXIMATELY 306 SF



SUITE # _____ CURRENT PRICE \$ _____ ONE TIME COMMUNITY FEE \$ _____

EXPIRES _____ KISCO ASSOCIATE INITIALS _____

Kisco Senior Living reserves the right to change pricing, delete or modify floor plans and specifications without notice or obligation. All square footage is approximate.



**THE PRESTON
OF ROCKVILLE**
A KISCO LIFESTYLE COMMUNITY



SERVICES | AMENITIES

MEMORY CARE

FOR YOUR HOME

- Interior and exterior home maintenance
- Housekeeping and linen service
- All utilities included: phone, electricity, trash removal, water, Wi-Fi
- Digital cable television, community channel, premium channels and DVR
- High-speed internet with private networks available

FOR YOUR CONVENIENCE

- Concierge service
- Complimentary scheduled transportation services
- Climate-controlled storage spaces available

FOR YOUR ENJOYMENT

- Flexible, made-to-order dining in upscale dining room
- Gourmet cuisine with a wide variety of delicious, thoughtful and healthy menus, including a daily special, prepared by The Preston's accomplished culinary team
- Billiard and game room
- Media room and lecture hall
- Creative arts studio
- Dedicated onsite salon and spa for Memory Care residents
- Large secured outdoor patio

FOR YOUR SECURITY

- Emergency response system and emergency generator
- 24/7 concierge and on-call maintenance and nursing staff

FOR YOUR WELL-BEING

- Fitness and weight room
- Group exercise studio
- Life enrichment programs
- A full calendar of social, cultural, and educational programs
- State-of-the-art fitness equipment designed specifically for seniors

APARTMENT FEATURES

- Spacious bathrooms with granite counters and walk-in showers
- Quality flooring products
- Window coverings
- Individual central air conditioning and heat
- Spacious common areas to host guests

