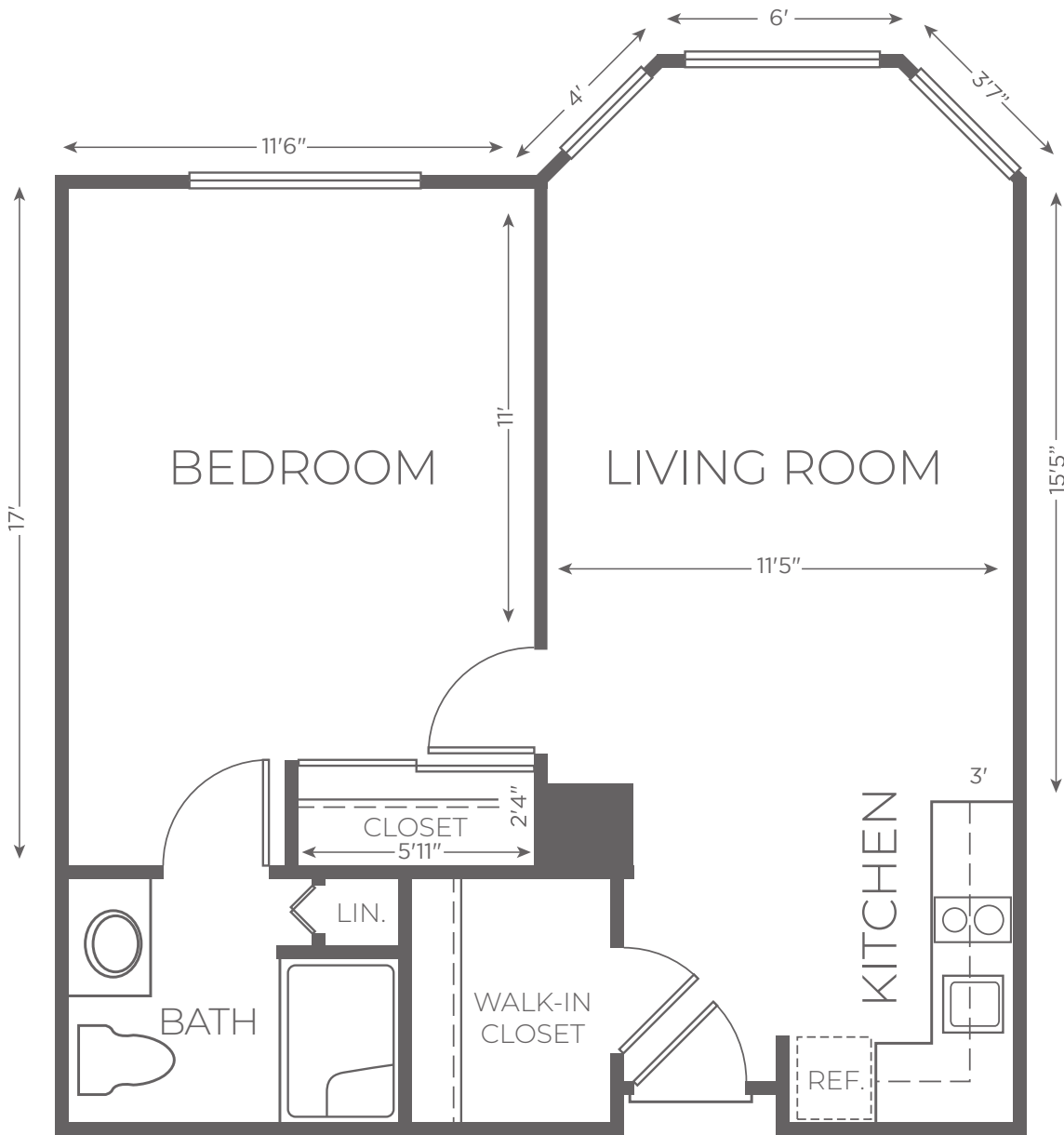


Plan F

1 BEDROOM DELUXE, 1 BATH, APPROXIMATELY 608 SF

INDEPENDENT LIVING



07 | 2025

RESIDENCE # _____ CURRENT PRICE \$ _____ EXPIRES _____ KISCO ASSOCIATE INITIALS _____

ONE TIME COMMUNITY FEE \$ _____ SECOND OCCUPANCY MONTHLY FEE \$ _____ PET MONTHLY FEE \$ _____

Kisco Senior Living reserves the right to change pricing, delete or modify floor plans and specifications without notice or obligation. All square footage is approximate.

