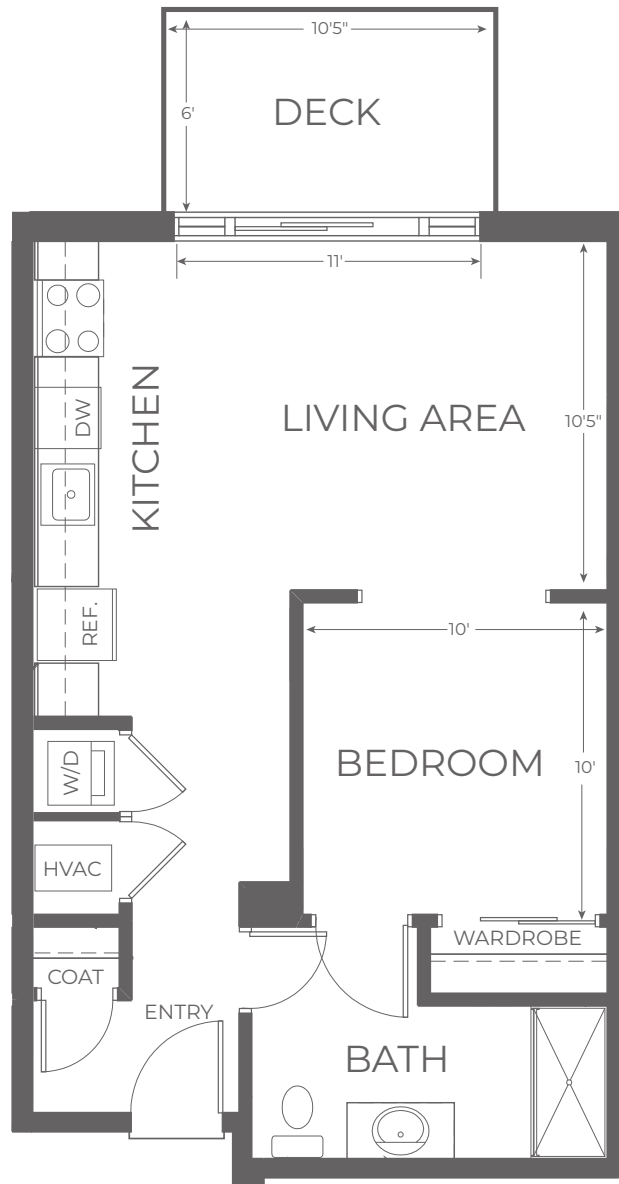


Aspen A

ALCOVE STUDIO, 1 BATH, DECK, APPROXIMATELY 595 SF

INDEPENDENT LIVING



APARTMENT # _____ CURRENT PRICE \$ _____ EXPIRES _____ KISCO ASSOCIATE INITIALS _____

ONE TIME COMMUNITY FEE \$ _____ SECOND OCCUPANCY MONTHLY FEE \$ _____ PET MONTHLY FEE \$ _____

Kisco Senior Living reserves the right to change pricing, delete or modify floor plans and specifications without notice or obligation. All square footage is approximate.

